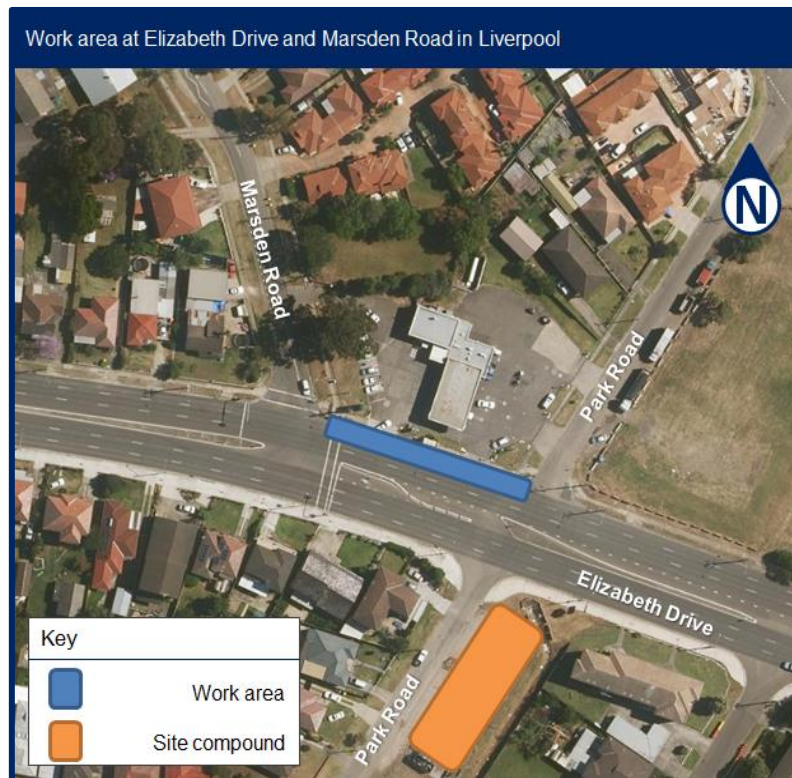


Extended working hours at Elizabeth Drive and Marsden Road, Liverpool from Friday 12 April

Roads and Maritime Services is upgrading the intersection of Elizabeth Drive and Marsden Road, Liverpool to ease congestion, reduce travel times and improve safety.



Roads and Maritime Services is upgrading the intersection of Elizabeth Drive and Marsden Road in Liverpool as part of our Pinch Point Program to reduce congestion, and improve traffic flow and safety.

To reduce the impact of our work on the local community and road users, we will work a one-time condensed schedule of work at this intersection during the school holidays.

From **Friday 12 April** until **Thursday 18 April 2019** we will work **24 hours a day** on Elizabeth Drive between Marsden and Park Roads. By working over the school holidays we will minimise traffic disruptions and reduce safety risks to our workers.

Our work activities will include:

- installing barriers
- setting up traffic control
- saw cutting
- jackhammering
- excavating trenches
- pipe laying
- backfilling
- road surface work

During this time we will also be accessing our site compounds on Park Road and Hoxton Park Road

We understand the work may be disruptive, so we will not working any night shifts immediately before and after this work to give the community some respite.

Our work schedule

We will be on site for up to **seven days and nights** between **Friday 12 April** and **Thursday 18 April 2019**.

Our work hours will be **24 hours a day for seven days** during this time.

We know this work will be disruptive, so we will not be working at night on **Wednesday 10 April** and **Thursday 11 April** as well as between **Friday 19 April** and **Thursday 25 April 2019**.

Contact

If you have feedback or concerns about the work schedule please contact our delivery partner Ward Civil team on 1800 897 841 or hoxtoncomms@wardcivil.com.au.

For information on other pinch points across Liverpool, please visit rms.work/urbanpinchpoints.

Thank you for your patience during this important work.

How will the work affect you?

Our work may be noisy at times. However, we will do everything we can to minimise its impact, including installing noise curtains along the work area and completing noisier activities such as saw cutting and jackhammering by **midnight**.

Our environment officers will be monitoring noise levels during this period to ensure they are kept to an acceptable limit.

Our delivery partner, Ward Civil will be available on 1800 897 841 during the entire period to discuss any specific concerns about the work.

Traffic changes

There will be temporary traffic changes during our work to ensure the work zone is safe. Lane closures and speed reductions will be in place for this time.

Traffic management and signs will be in place to assist motorists with the changed conditions. Pedestrian access will be maintained at all times, although temporary detours may be in place. Please keep to speed limits and follow signs and traffic controllers' directions. For the latest traffic updates, you can call 132 701, visit [livetraffic.com](https://www.livetraffic.com) or download the Live Traffic NSW App.

Thank you for your patience and understanding while we carry out this important work.



Translating and Interpreting Service

If you need an interpreter, please call the Translating and Interpreting Service (TIS National) on **131 450** and ask them to telephone Roads and Maritime Services on 1800 897 841

Arabic

إذا كنتم بحاجة إلى مترجم، الرجاء الاتصال بخدمة الترجمة الخطية والشفوية (TIS National) على الرقم **131 450**، والطلب منهم الاتصال بوكالاتكم Roads and Maritime Services على الرقم **1800 897 841**

Cantonese

若你需要口譯員，請致電 **131 450** 聯絡翻譯和口譯服務署 (TIS National)，要求他們致電 **1800 897 841** 聯絡 Roads and Maritime Services。

Mandarin

如果你需要口译员，请致电 **131 450** 联系翻译和口译服务署 (TIS National)，要求他们致电 **1800 897 841** 联系 Roads and Maritime Services。

Greek

Αν χρειάζεστε διερμηνέα, παρακαλείσθε να τηλεφωνήσετε στην Υπηρεσία Μετάφρασης και Διερμηνείας (Εθνική Υπηρεσία ΤΙΣ) στο **131 450** και ζητήστε να τηλεφωνήσουν Roads and Maritime Services στο 1800 897 841

Italian

Se desiderate l'assistenza di un interprete, prego telefonare al Servizio Interpreti e Traduttori (TIS National) al **131 450** chiedendo di contattare Roads and Maritime Services al 1800 897 841

Korean

통역사가 필요하시면 번역통역서비스 (TIS National) 에 **131 450** 으로 연락하여 이들에게 **1800 897 841** 번으로 Roads and Maritime Services 에 전화하도록 요청하십시오.

Vietnamese

Nếu cần thông ngôn viên, xin quý vị gọi cho Dịch Vụ Thông Phiên Dịch (TIS Toàn Quốc) qua số **131 450** và nhờ họ gọi cho Roads and Maritime Services qua số 1800 897 841