

## **Project update – Intersection upgrade on Hoxton Park Road and Hill Road, Lurnea**

**The NSW Government is planning this project as part of its \$300 million Urban Roads Pinch Point Program, which aims to reduce congestion and improve travel times on Sydney's busiest corridors.**

In July 2016, Roads and Maritime Services sought community feedback on a plan for a dedicated left turn lane from Hoxton Park Road into Hill Road.

During the consultation period we received comments from six people and one organisation on four matters. All submissions were in favour of the proposal. Matters raised included suggestions for additional improvements to the intersection, traffic light phasing and matters outside the scope of this proposal.

Following a review of the comments, we have prepared a Community Consultation Report, summarising the feedback and our responses. A copy of this report is available at [www.rms.nsw.gov.au/projects](http://www.rms.nsw.gov.au/projects) or by contacting the project team.

We would like to thank everyone who took time to consider our proposal and provide feedback. Following a review of the comments, we have decided to continue investigating the proposal. In response to community feedback we will also consider the installation of 'Keep Clear' pavement marking and 'Do Not Queue Across Intersection' signage on Hill Road at the intersection of Taloma Avenue.

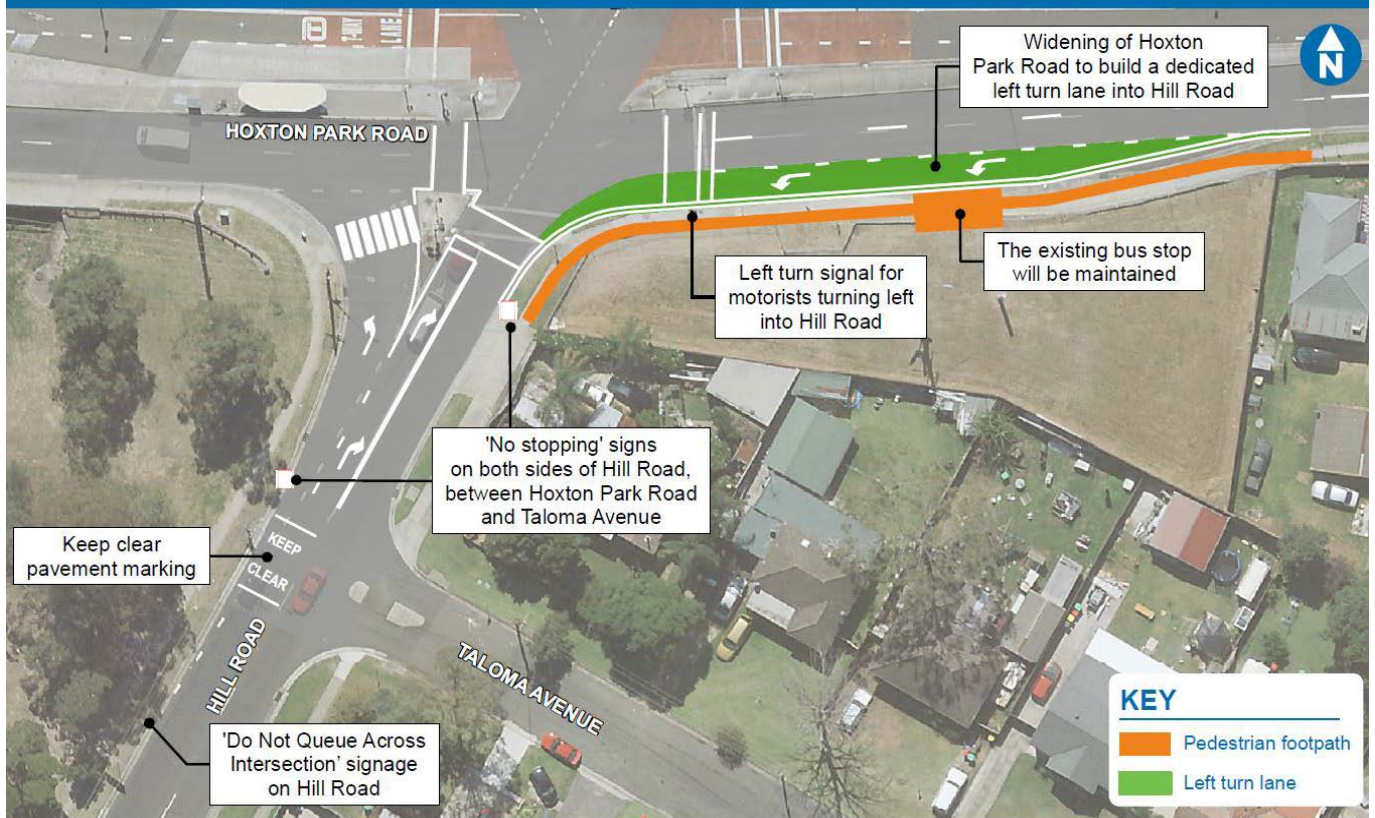
### **What happens next?**

Roads and Maritime will continue to keep the community updated as the proposal progresses.

### **Contact**

If you have any questions, please contact our delivery partner DownerMouchel on 1800 332 660 or email [nsw\\_projects@downermouchel.com](mailto:nsw_projects@downermouchel.com). For more information on our projects, visit [rms.nsw.gov.au](http://rms.nsw.gov.au)

## New left turn lane from Hoxton Park Road into Hill Road, Lurnea



### Translating and Interpreting Service

If you need an interpreter, please call TIS National on 131 450 and ask them to call DownerMouchel on 1800 332 660.

**Arabic**  
إذا كنتم بحاجة إلى مترجم، الرجاء الاتصال بخدمة الترجمة الخطية والشفهية (TIS National) على الرقم 1800 332 660 ، و لطلب منهم الإتصال بوكنتكم DownerMouchel على الرقم 1800 332 660

**Cantonese**  
若你需要口譯員，請致電 131 450 聯絡翻譯和口譯服務署 (TIS National)，要求他們致電 1800 332 660 聯絡 DownerMouchel。

**Mandarin**  
如果你需要口译员，请致电 131 450 联系翻译和口译服务署 (TIS National)，要求他们致电 1800 332 660 联系 DownerMouchel。

#### Greek

Αν χρειάζεστε διερμηνέα, παρακαλείσθε να τηλεφωνήσετε στην Υπηρεσία Μετάφρασης και Διερμηνείας (Εθνική Υπηρεσία TIS) στο 131 450 και ζητήστε να τηλεφωνήσουν DownerMouchel στο 1800 332 660.

#### Russian

Если вам нужен переводчик, то позвоните в Службу письменного и устного перевода (TIS National) по номеру 131 450 и скажите переводчику, что вам нужно позвонить в DownerMouchel по номеру 1800 332 660.

#### Korean

통역사가 필요하시면 번역통역서비스 (TIS National) 에 131 450 으로 연락하여 이들에게 1800 332 660 번으로 DownerMouchel 에 전화 하도록 요청하십시오.

#### Vietnamese

Nếu cần thông ngôn viên, xin quý vị gọi cho Dịch Vụ Thông Phiên Dịch (TIS Toàn Quốc) qua số 131 450 và nhờ họ gọi cho DownerMouchel qua số 1800 332 660.

