

Hume Highway and Homebush Road, Strathfield

Community Consultation Report

Roads and Maritime Services | April 2018



Objective references

Objective ID	Objective File ID
Objective Document location	

Version history

Version	Author	Date	Details
0.1	Ventia Boral Amey Joint Venture	09/02/18	Report submitted to Roads and Maritime Services
0.2	Ventia Boral Amey Joint Venture	09/03/18	Changes sent back to Roads and Maritime Services
0.3	Ventia Boral Amey Joint Venture	22/03/18	Further changes sent back to Roads and Maritime Services

Distribution and approval

For Approval			
Title	Name	Signature	Date
0.1	Roads and Maritime Services – first review		07/03/18
0.2	Roads and Maritime Services – second review		22/03/18
0.3	Roads and Maritime Services – third review		06/04/2018
For Information			
Title	Name		



Executive summary

This report provides a summary of Roads and Maritime Services' consultation with the community and key stakeholders on a proposal to improve the flow of traffic and reduce delays at the Hume Highway and Homebush Road intersection in Strathfield.

The NSW Government is funding this proposal as part of its \$300 million Urban Roads Pinch Points Program, which aims to reduce congestion and improve travel times on Sydney's busiest road corridors, particularly during weekday peak periods.

This proposal aims to increase the capacity of the right turn bay on the Hume Highway, increase the efficiency of the intersection and improve the traffic flow for vehicles travelling along the Hume Highway into Homebush Road.

Roads and Maritime invited feedback on the proposal in November 2017. We received feedback from 50 people including one petition signed by 30 people. Two people support the proposal, three people supported the proposal with conditions, 42 people opposed the proposal (including individuals who signed a petition) and three people did not state a preference. Key matters raised included:

- increased traffic congestion in the area
- increased risk to safety of motorists, pedestrians and school children
- impacts to local business, parking and vehicle access on Homebush Road
- speeding on Homebush Road
- road surface on Liverpool Road
- traffic light phasing.

The decision

After considering all responses we have decided to proceed with the proposal with the following changes.

We will retain all parking spaces on both sides of Homebush Road as a result of community feedback including:

- retaining eight parking spaces on the western side of Homebush Road between the Hume Highway and High Street during the morning peak period from 8am to 10am
- retaining 12 parking spaces on the eastern side of Homebush Road between the Hume Highway and High Street during the afternoon peak period from 4pm to 6pm.

This decision was based on feedback from council and the community, including the current needs of the community based on existing infrastructure. An assessment was made regarding the aim of the project and it was determined that the project can proceed at this time without the parking restrictions. Roads and Maritime will continue to monitor this intersection.

We will continue to keep the community and stakeholders informed as the project progresses.

Contents

1. Introduction.....	7
1.1. Background.....	7
1.2. The proposal.....	7
2. Consultation approach	9
2.1. Consultation objectives	9
2.2. Values.....	9
2.3. How consultation was done	9
3. Consultation summary	10
3.1. Overview.....	10
3.2. Feedback and Roads and Maritime's responses.....	10
3.3. Decision.....	18
3.4. Next steps.....	19
4. Appendix.....	20
4.1. Appendix A – 'Have your say' letter November 2017	20
4.2. Appendix B – Distribution map.....	22

Figures and tables

Figure 1 – Original proposed improvements on the Hume Highway and Homebush Road, Strathfield	8
Figure 2 – Updated improvements on the Hume Highway and Homebush Road, Strathfield.....	18
Table 1 – Feedback summary and Roads and Maritime's responses	11

1. Introduction

1.1. Background

A traffic corridor planning study identified the intersection of Hume Highway and Homebush Road as a congestion point to the Hume Highway. During the strategic study phase, several causes for traffic congestion were identified, these included:

- larger vehicles are reducing queuing space for vehicles turning right into Homebush Road (southbound) from Hume Highway (western approach), due to the current length of the lane
- overspilling of the right turn, reducing the current two-lane through movement to one lane on the Hume Highway
- heavy queues on Homebush Road on the north and south approaches to Hume Highway
- travel time delays for vehicles travelling through the intersection during the AM and PM peak periods.

An independent parking study was completed in October 2017 during the detail design phase of the project. The parking study identified alternative on street parking within 240 metres, or 3 minutes walking distance, from the intersection.

1.2. The proposal

Roads and Maritime is proposing to improve the flow of traffic and reduce delays at the intersection of the Hume Highway and Homebush Road.

The proposal included:

- extending the right turn bay by about 120 metres westbound on the Hume Highway
- extending the current no stopping restriction by an additional eight parking spaces on the western side of Homebush Road between the Hume Highway and High Street during the morning peak period from 8am to 10am
- extending the current no stopping restriction by an additional 12 parking spaces on the eastern side of Homebush Road between the Hume Highway and High Street during the afternoon peak period from 4pm to 6pm
- installing associated line markings and signage on the Hume Highway and Homebush Road.

We have included a map of the original proposal to show the location of the intersection improvements.



Figure 1 – Original proposed improvements on the Hume Highway and Homebush Road, Strathfield

2. Consultation approach

2.1. Consultation objectives

We consulted with the community and key stakeholders on the proposal to:

- seek comment, feedback, ideas, and suggestions for us to consider when making a decision
- build a database of interested and concerned community members we can continue to engage during the proposal's development and delivery.

2.2. Values

Our values underpin our decisions and behaviours when working with customers, colleagues, stakeholders and partners.

- **Customer focus** - We place the customer at the centre of everything we do
- **Collaboration** - We value each other and create better outcomes by working together
- **Solutions** - We deliver sustainable and innovative solutions to NSW's transport needs
- **Integrity** - We take responsibility and communicate openly
- **Safety** - We prioritise safety for our people and our customers.

2.3. How consultation was done

Community members and stakeholders were encouraged to provide their feedback and make comments via email, mail or phone contact with the project team.

We distributed 3,526 letters (Appendix A) to local residents, businesses and key stakeholders, (Appendix B) inviting feedback on the proposal. We also directly emailed copies of the letter to key stakeholders including MP's, Strathfield Council and Strathfield Public School.

3. Consultation summary

3.1. Overview

Roads and Maritime invited feedback in November 2017 about the improvements to the intersection of the Hume Highway and Homebush Road.

We received comments from 50 people including one petition signed by 30 people. Two people supported the proposal, three supported the proposal with conditions, 42 opposed the proposal (including individuals who signed a petition) and three did not state a preference. Key matters raised included:

- increased traffic congestion in the area
- increased risk to safety of motorists, pedestrians and school children
- impacts to local business, parking and vehicle access on Homebush Road
- speeding on Homebush Road
- road surface on Liverpool Road
- traffic light phasing.

3.2. Feedback and Roads and Maritime's responses

Roads and Maritime has provided responses to all feedback received on this proposal. The responses are provided directly to the person who commented, as well as in this report, which will be made available to the public.

All comments have been considered to help Roads and Maritime make decisions on this proposal. Matters raised during consultation that are not within Roads and Maritime's area of responsibility have been forwarded to the relevant departments.

Table 1- Feedback summary and Roads and Maritime's responses

Category	Matter raised	Roads and Maritime's response
Increased traffic congestion in the area	The proposal will cause further traffic congestion and travel times in the area.	A review of the road corridor and traffic modelling identified the need for intersection improvements and extension of the right turn bay for eastbound vehicles travelling from Hume Highway into Homebush Road to improve traffic flow and safety. By extending the right turn bay on Hume Highway, current congestion caused by the right turn traffic at the intersection will be reduced and the efficiency of the intersection increased.
	Homebush Road is congested because vehicles travelling from the Hume Highway have longer green light time to turn than other roads in the area.	
Line marking	Extending the double line will cause further traffic congestion in the area.	The proposal does not include extending the double line on Homebush Road.
	Extending the double line will increase noise and dust into the Strathfield South Public School.	
Increased risk to safety of motorists, pedestrians and school children	Pedestrians get off the bus and walk straight across Homebush Road, rather than walking to the lights to cross which in turn will cause more accidents.	The intersection of Hume Highway and Homebush Road is fitted with a controlled pedestrian crossing in each direction for the safety of pedestrians and school children.
	The proposal will impact safety of school children in both morning peak period and afternoon peak period for when school children arrive and go home.	Homebush Road is a council maintained road. Please consider contacting Strathfield Council with your feedback regarding additional safety measure for pedestrians on Homebush Road.
Local business, parking and vehicle access on Homebush Road	The proposal to restrict parking spaces will make it difficult for residents to reverse out of driveways due to heavy traffic.	As a result of community feedback, we have decided not to proceed with the removal of parking spaces on both sides of Homebush Road.
	Taking away and minimising the opportunities for the community to park along either side of Homebush Road to visit and trade with the various shops will negatively affect the viability and economic position business community.	While the intersection improvements are able to proceed without the parking changes, the overall benefit including reducing queuing lengths and improving traffic flow on Homebush Road will be reduced.
	Extend no stopping restrictions on Homebush Road between 7.30am to 10.00am and 3.30pm to 6.00pm on both sides of the road.	
	Homebush Road is under the jurisdiction of City of Canterbury-Bankstown and parking is paid for by rate payers.	

Speeding on Homebush Road	The proposal will increase vehicles speeding on Homebush Road.	<p>The enforcement of traffic laws remains a primary responsibility of the NSW Police Force. This includes motorists disobeying road rules, such as speeding. Roads and Maritime encourages you to contact Flemington Local Area Command on (02) 9646 8699, who will determine whether targeted enforcement activities may be appropriate.</p> <p>The NSW Centre for Road Safety regularly receives requests from the community to have a speed camera installed in their local area. A new initiative of the Speed Camera Strategy is to allow NSW residents to nominate locations for speed camera enforcement.</p> <p>We encourage you to visit the website: saferroadsnsw.com.au/haveyoursayspeedcameras.aspx to formally nominate this location as a potential site for a speed camera. The information you provide, together with crash data and other road safety information will help to prioritise future locations for speed cameras in NSW.</p> <p>For further information on the NSW Speed Camera Strategy, visit the website: rms.nsw.gov.au/roadsafety/downloads/nsw_speed_camera_strategy.pdf</p>
Road surface on Liverpool Road	Fix the uneven surface on Liverpool Road at the intersection of Hume Highway and Homebush Road.	Your concerns have been passed on to the Network and Safety Team for consideration.
Traffic management	Develop a Traffic Management Plan for the broader area.	Your concerns have been passed onto the Network and Safety Team for consideration.
Property	The proposal will decrease the value of my property.	Based on surveying and traffic modelling the proposed improvements will not directly affect the properties surrounding the intersection. Therefore there is no compensation available under Roads and Maritime Services' guidelines
Traffic light phasing	Increase the timing of the red light at the intersection of Hume Highway and Homebush Road.	Traffic lights in NSW are controlled by the Sydney Coordinated Adaptive Traffic System (SCATS), which allocates the length of green time based on real time traffic flow. Sensors beneath the road measure the flow and density of traffic approaching the lights in each direction and the green time is allocated accordingly. The length of time the light stays green varies in response to changing traffic conditions. This ensures that the traffic light phasing is operating at maximum efficiency.
	Increase the right turn arrow light time on Homebush Road into Hume Highway to improve traffic flow.	

	<p>Consider the phasing of the green traffic light turning arrow from Homebush Road turning right onto the Hume Highway to allow more cars to turn.</p>	<p>Vehicles travelling on Hume Highway are currently given priority in the traffic light phases due to the high volume of traffic on the road. Roads with higher traffic demands are given longer green time to reduce congestion along the network.</p>
	<p>Improve traffic light phasing at the intersection of the Hume Highway and Homebush Road.</p>	<p>The proposed design will improve the overall efficiency of the intersection.</p>
<p>Additional parking in the local government area</p>	<p>Create more off-street parking and a council car park on Homebush Road heading towards High Street.</p>	<p>Matters and concerns regarding additional parking in the area, street amenity and local roads under the jurisdiction of council are not part of the proposal and considered out of scope for this project.</p> <p>Please consider contacting Strathfield Council with your feedback regarding additional parking amenities.</p>
<p>Out of scope matters raised – further improvements to the area</p>	<p>Implement speed bumps along Homebush Road to deter ‘rat runs’ for vehicles traveling towards the intersection of Homebush Road and the Hume Highway.</p>	<p>The enforcement of traffic laws remains a primary responsibility of the NSW Police Force. This includes motorists disobeying road rules, such as speeding. Roads and Maritime encourages you to contact Flemington Local Area Command on (02) 9646 8699, who will determine whether targeted enforcement activities may be appropriate.</p>
	<p>Install a red-light camera/speed camera at the intersection of Homebush Road and High Street.</p>	<p>The NSW Centre for Road Safety regularly receives requests from the community to have a speed camera installed in their local area. A new initiative of the Speed Camera Strategy is to allow NSW residents to nominate locations for speed camera enforcement.</p> <p>We encourage you to visit the website: saferroadsnsw.com.au/haveyoursayspeedcameras.aspx to formally nominate this location as a potential site for a speed camera. The information you provide, together with crash data and other road safety information will help to prioritise future locations for speed cameras in NSW.</p> <p>For further information on the NSW Speed Camera Strategy, visit the website: rms.nsw.gov.au/roadsafety/downloads/nsw_speed_camera_strategy.pdf</p> <p>Matters and concerns relating to other local roads under the jurisdiction of council are not part of the proposal and considered out of scope for this project. Please consider contacting Strathfield Council with your feedback.</p>

	<p>There are many heavy vehicles with long trailers entering the Hume Highway from Strathfield South. There isn't sufficient turning area for them to turn left into Hume Highway. As a result, they occupy both northbound lanes of Homebush Road thus creating further traffic congestion.</p>	<p>The Pinch Point Program's objective is to deliver for low impact, high benefit projects. Traffic surveys completed at the intersection indicate the volume of heavy vehicles is low and therefore considered outside the scope for this project.</p>
	<p>Reduce traffic congestion on Hume Highway between Hume Highway and Dean Street. Synchronise the lights at Homebush Rd through to the intersection of Wallace Avenue to improve traffic flow.</p> <p>Share the traffic with the Boulevard by extending the right hand turn on the Hume Highway into the Boulevard.</p> <p>Extend three lanes on the Hume Highway, west of Homebush Road beyond Wallis Avenue.</p> <p>Implement a clearway at the intersection of Bede Street and the Hume Highway to help cars access the right-hand lane for a more effective turn into Wallis Avenue.</p> <p>Relocate the traffic lights to cover the intersection of Bede Street and Wallis Avenue to improve traffic flow.</p> <p>Implement a kiss and ride drop off point on Homebush Road.</p> <p>More traffic easing measures are required on Liverpool Road due to the series of traffic lights and phasing which stalls traffic near Wallis Avenue, Cosgrove Road, Feeder Road, Centenary Drive and Roberts Road.</p>	<p>The purpose of this consultation was to feedback on the proposed intersection improvements on Hume Highway and Homebush Road, Strathfield.</p> <p>The scope of the proposal does not include addressing other intersections in the area. The proposed improvements will help to ease congestion and improve traffic flow from Hume Highway into Homebush Road.</p>

Install a set of traffic lights at Fitzgerald Crescent so vehicles can turn right onto the Hume Highway.

Consider additional improvements to other the intersections between Homebush Road and Roberts Road.

Implement a right hand turning arrow at the intersection of Punchbowl Road and Burwood Road (at the Belfield Shops) to improve traffic flow and safety.

Increase the timing of the red light at the intersection of Hume Highway and Wallis Avenue.

Consider an improvement to the left turn from Hume Highway into Bede Street to improve safety.

Consider improvement for cars travelling from the southern side of Homebush Road (heading in a northerly direction) due to increased queueing.

Implement speed bumps along Homebush Road to deter 'rat runs' for vehicles traveling towards the intersection of Homebush Road and the Hume Highway.

Reduce traffic congestion on Hume Highway between Hume Highway and Dean Street.

Synchronise the lights at Homebush Rd through to the intersection of Wallace Avenue to improve traffic flow.

Homebush Road – Intersection improvements

Share the traffic with the Boulevard by extending the right hand turn on the Hume Highway into the Boulevard.
Extend three lanes on the Hume Highway, west of Homebush Road beyond Wallis Avenue.
Implement a clearway at the intersection of Bede Street and the Hume Highway to help cars access the right-hand lane for a more effective turn into Wallis Avenue.
Relocate the traffic lights to cover the intersection of Bede Street and Wallis Avenue to improve traffic flow.
Implement a kiss and ride drop off point on Homebush Road.
More traffic easing measures are required on Liverpool Road due to the series of traffic lights and phasing which stalls traffic near Wallis Avenue, Cosgrove Road, Feeder Road, Centenary Drive and Roberts Road.
Install a set of traffic lights at Fitzgerald Crescent so vehicles can turn right onto the Hume Highway.
Consider additional improvements to other the intersections between Homebush Road and Roberts Road.
Implement a right hand turning arrow at the intersection of Punchbowl Road and Burwood Road (at the Belfield Shops) to improve traffic flow and safety.

Homebush Road – Intersection improvements

	Increase the timing of the red light at the intersection of Hume Highway and Wallis Avenue.	
	Consider an improvement to the left turn from Hume Highway into Bede Street to improve safety.	
	Consider improvement for cars travelling from the southern side of Homebush Road (heading in a northerly direction) due to increased queueing.	

3.3. Decision

We thank everyone that provided comments and the community and stakeholders for considering the proposal.

After considering all responses and reviewing the results of the parking study completed in October 2017, we have decided to proceed with the proposal with changes.

We will retain all parking spaces on both sides of Homebush Road as a result of community feedback including:

- retaining eight parking spaces on the western side of Homebush Road between the Hume Highway and High Street during the morning peak period from 8am to 10am
- retaining 12 parking spaces on the eastern side of Homebush Road between the Hume Highway and High Street during the afternoon peak period from 4pm to 6pm.

This decision was based on feedback from Council and the community, including the current needs of the community based on existing infrastructure. An assessment was made regarding the aim of the project and it was determined that the project can proceed at this time without the parking restrictions. Roads and Maritime will continue to monitor this intersection.

We have included a map in (figure 2) to show the updated intersection improvements as a result of the decision.

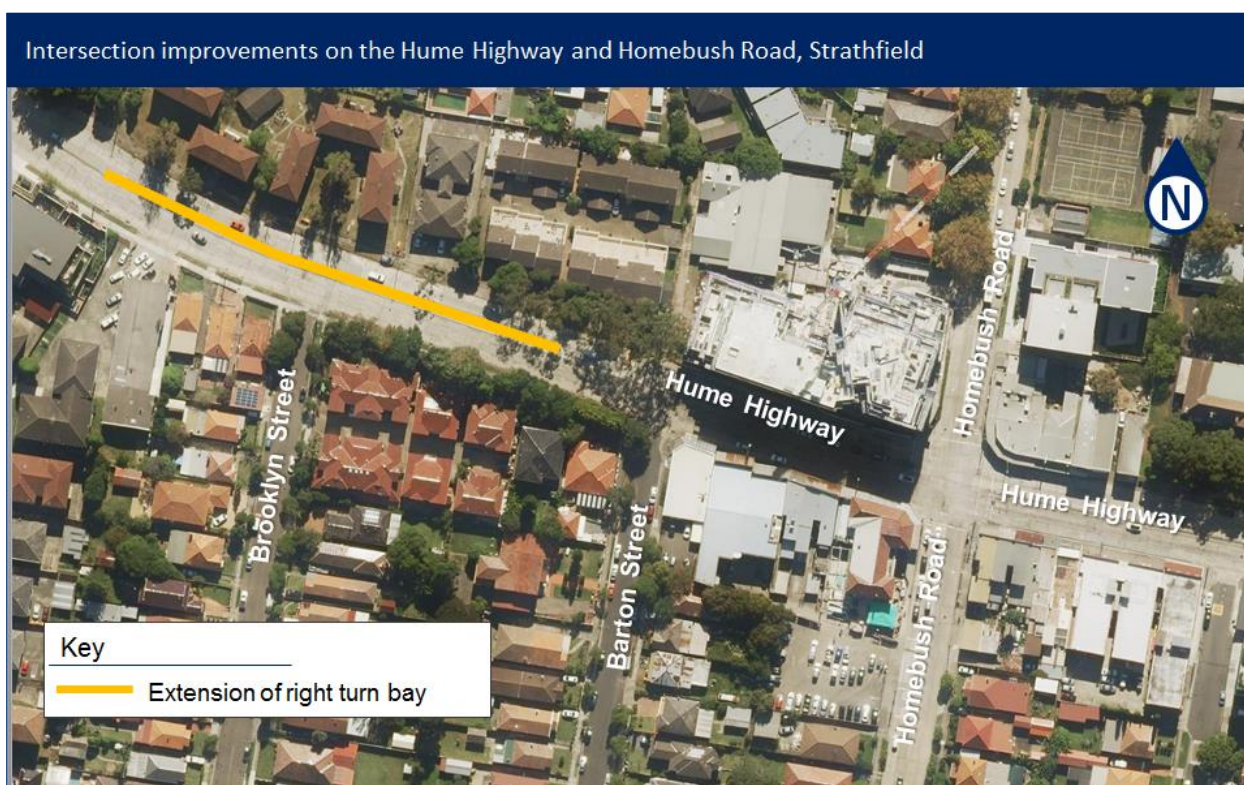


Figure 2 – Updated improvements on the Hume Highway and Homebush Road, Strathfield

3.4. Next steps

We have considered all submissions and will ensure our team is aware of concerns raised by the community. The issues highlighted by stakeholders and the community during this consultation will be appropriately addressed throughout the delivery of this project.

We will continue to keep the community informed of the project progress with timely updates.

4. Appendix

4.1. Appendix A – ‘Have your say’ letter November 2017



November 2017

Have your say – Intersection improvements on the Hume Highway and Homebush Road, Strathfield

The NSW Government is funding this proposal as part of its \$300 million Urban Roads Pinch Point Program, which aims to reduce congestion and improve travel times on Sydney’s busiest corridors.

Roads and Maritime Services is inviting your feedback by **Monday 11 December** on a proposal to improve the flow of traffic and reduce delays at the intersection of the Hume Highway and Homebush Road.

Road users travelling through this intersection during the morning peak period currently experience around a two minute delay to their travel times. Similar delays also occur during the afternoon peak period at this intersection.

What is being proposed?

The proposal includes:

- extending the right turn lane by about 120 metres westbound on the Hume Highway
- extending the existing no stopping restriction by an additional eight parking spaces on the western side of Homebush Road between the Hume Highway and High Street during the morning peak period from 8am to 10am
- extending the existing no stopping restriction by an additional 12 parking spaces on the eastern side of Homebush Road between the Hume Highway and High Street during the afternoon peak period from 4pm to 6pm
- installing associated linemarkings and signage on the Hume Highway and Homebush Road.

We have included a map to show the proposal.

How will it benefit you?

The proposed intersection improvements will:

- increase the capacity of the right turn bay on the Hume Highway
- increase the efficiency of the intersection
- improve the traffic flow for vehicles travelling along the Hume Highway.

Your local knowledge matters

We are seeking your feedback by **Monday 11 December** to finalise the proposal. Your local knowledge will help us meet the needs and expectations of the community and all road users who travel through this section of the Hume Highway.

Please send your comments to our delivery partner:

Ventia Boral Amey Joint Venture C&SE
PO Box 838
Rockdale NSW 2216

or nswenquiries@vbajv.com.au.

We will consider all feedback and continue to update you as the project progresses.

Contact

If you have any questions, please call our delivery partner Ventia Boral Amey Joint Venture on, 1800 677 700 or email nswenquiries@vbajv.com.au.

For more information on our projects, visit rms.nsw.gov.au.

Thank you for your patience during this important work.

Location of intersection improvements on the Hume Highway and Homebush Road, Strathfield

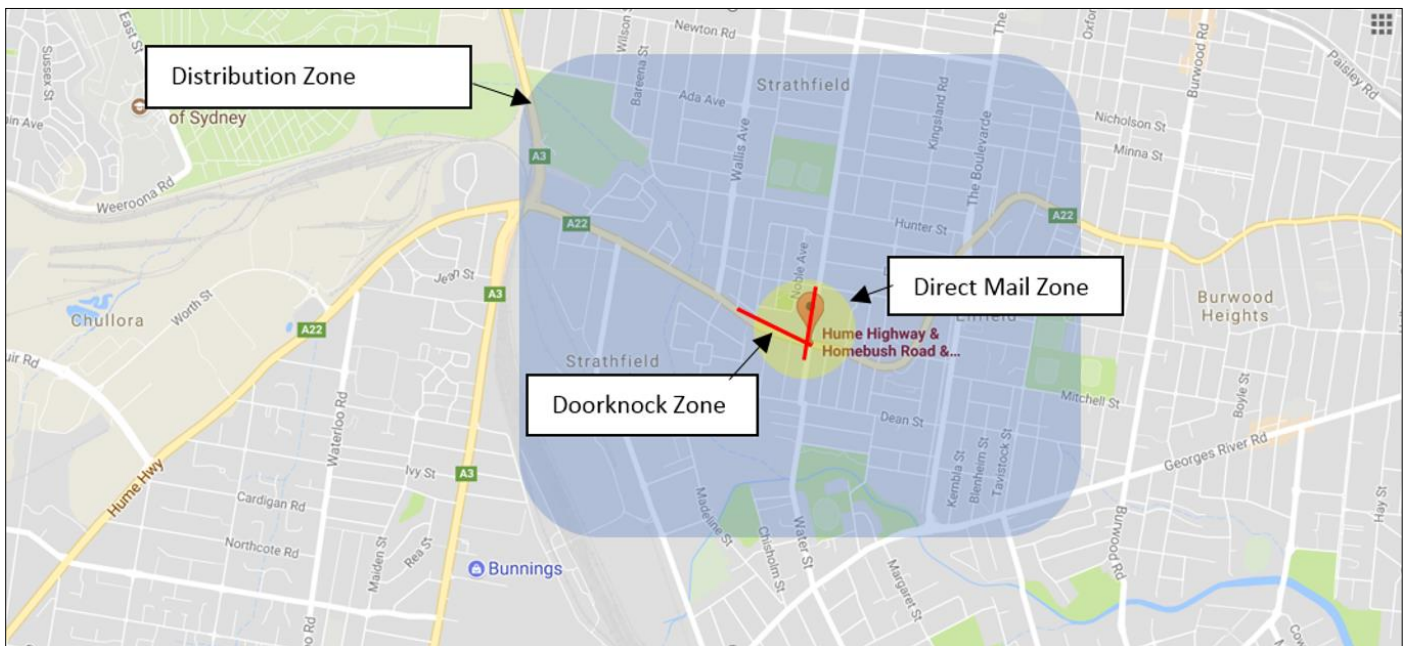


Translating and Interpreting Service

If you need an interpreter, please call the Translating and Interpreting Service (TIS National) on 131 450 and ask them to telephone Ventia Boral Amey Joint Venture on 1800 677 700.

REF T07158.4

4.2. Appendix B – Distribution map





rms.nsw.gov.au/pinchpoints



13 22 13



Customer feedback
Roads and Maritime
Locked Bag 928,
North Sydney NSW 2059

April 2018
RMS 18.815
ISBN: 978-1-925797-23-7