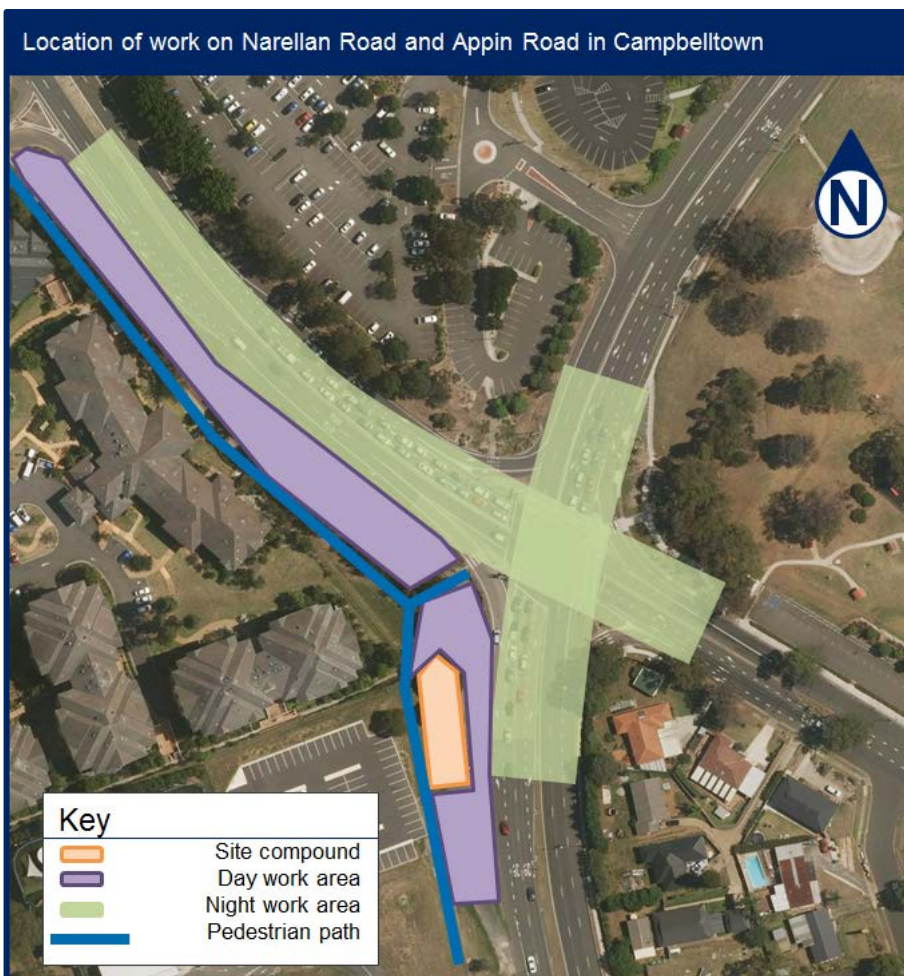


Continuing night work at the intersection of Narellan Road and Appin Road in Campbelltown

The NSW Government is funding this proposal as part of its program to ease congestion and improve travel times on Sydney's busiest corridors.



Roads and Maritime Services is upgrading the intersection of Narellan Road and Appin Road in Campbelltown. This project aims to improve efficiency, safety and congestion at this busy intersection.

Upcoming work includes:

- Road widening
- Upgrading traffic signals
- Digging new drainage pits and installing new drainage pipes
- Line marking and re-sheeting
- Landscaping
- Installing new road signs.

Progress

Work completed on this project so far includes:

- Earthworks
- Stormwater drainage
- Utility relocations
- Concrete base for new road.

Our work schedule

During the next stage, we will continue working up to **five nights per week consecutively for 45 night shifts and 40 day shifts**, excluding public holidays, between **Monday 26 November and Friday 15 February**, weather permitting.

Day work will be carried out between **7am and 6pm on weekdays** and between **7am and 1pm on Saturdays**. Our night work hours will be between **8pm and 5am from Sunday to Friday**.

Work will be halted from **Friday 21 December** until **Monday 7 January** for the holiday shutdown.

How will the work affect you?

Our work may be noisy at times but we will do everything we can to minimise its impact, including completing the noisier tasks by **midnight**.

Traffic changes

There will be temporary traffic changes during our work hours to ensure the work zone is safe.

Lane closures will be in place and may affect travel times. Please keep to speed limits and follow signs and traffic controllers' directions. For the latest traffic updates, you can call 132 701, visit livetraffic.com or download the Live Traffic NSW App.

Contact

If you have any questions, please contact Travis McCleary, our contractor Community Liaison Representative on 0402286402 or travismccleary@christiecivil.com.au.

For more information on our projects, visit rms.nsw.gov.au.

Thank you for your patience during this important work.



Translating and Interpreting Service

If you need an interpreter, please call the Translating and Interpreting Service (TIS National) on **131 450** and ask them to telephone Roads and Maritime Services on 0402 286 402

Arabic

إذا كنتم بحاجة إلى مترجم، الرجاء الاتصال بخدمة الترجمة الخطية والشفهية (TIS National) على الرقم **131 450**، والطلب منهم الاتصال بوكالتكم Roads and Maritime Services على الرقم 0402 286 402

Cantonese

若你需要口譯員，請致電 **131 450** 聯絡翻譯和口譯服務署 (TIS National)，要求他們致電 0402 286 402 聯絡 Roads and Maritime Services。

Mandarin

如果你需要口译员，请致电 **131 450** 联系翻译和口译服务署 (TIS National)，要求他们致电 0402 286 402 联系 Roads and Maritime Services。

Greek

Αν χρειάζεστε διερμηνέα, παρακαλείστε να τηλεφωνήσετε στην Υπηρεσία Μετάφρασης και Διερμηνείας (Εθνική Υπηρεσία TIS) στο **131 450** και ζητήστε να τηλεφωνήσουν Roads and Maritime Services στο 0402 286 402

Italian

Se desiderate l'assistenza di un interprete, prego telefonare al Servizio Interpreti e Traduttori (TIS National) al **131 450** chiedendo di contattare Roads and Maritime Services al 0402 286 402

Korean

통역사가 필요하시면 번역통역서비스 (TIS National) 에 **131 450** 으로 연락하여 이들에게 0402 286 402 번으로 Roads and Maritime Services 에 전화하도록 요청하십시오.

Vietnamese

Nếu cần thông ngôn viên, xin quý vị gọi cho Dịch Vụ Thông Phiên Dịch (TIS Toàn Quốc) qua số **131 450** và nhờ họ gọi cho Roads and Maritime Services qua số 0402 286 402