

Start of work on Narellan Road and Appin Road, Campbelltown, from Tuesday, 17 April

The NSW Government is funding this proposal as part of its \$300 million Urban Roads Pinch Points Program, which aims to reduce congestion and improve travel times on Sydney's busiest road corridors.

Roads and Maritime Services will be starting preliminary site work on Narellan Road and Appin Road intersection upgrade including the relocation of existing Telstra services.

In April 2017 we invited feedback on the proposal and in June 2017 notified the community and stakeholders that we would be proceeding with the project.

The benefits include:

- Increased capacity of the intersection and reduce congestion
- Reduce travel times, particularly in peak hours
- Improve traffic flow at this intersection and approaches
- Improved safety for pedestrians and road users.

Our work schedule

The proposal will be carried out in two stages. See map overleaf.

Stage 1: Tuesday, 17 April, 2018 - Telstra relocation works commence. This will require the removal of one section of the vegetated area.

Stage 2: June 2018 - Road works commence. This will require further removal of vegetation.

Some of the vegetation within the proposal area is considered part of the Cumberland Plain Woodland vegetation community. Restorative landscaping will be carried out in the area adjacent to the works, using plant species from this vegetation community type.

We will be on site to carry out the Telstra relocation works for **20 night shifts** and **20 day shifts** between **Tuesday, 17 April** and **Friday, 22 June**, excluding public holidays, weather permitting. Our night work hours will be between **8pm** and **5am** from **Sunday** to **Friday**. Our day work hours will be between **7am** and **6pm** from **Monday** to **Friday** and between **7am** and **1pm** on **Saturday**.

How will the work affect you?

Our work may be noisy at times, however we will do everything we can to minimise its impact, including completing noisier activities by **midnight**.

Traffic changes

There will be temporary traffic changes during our work hours to ensure the work zone is safe.

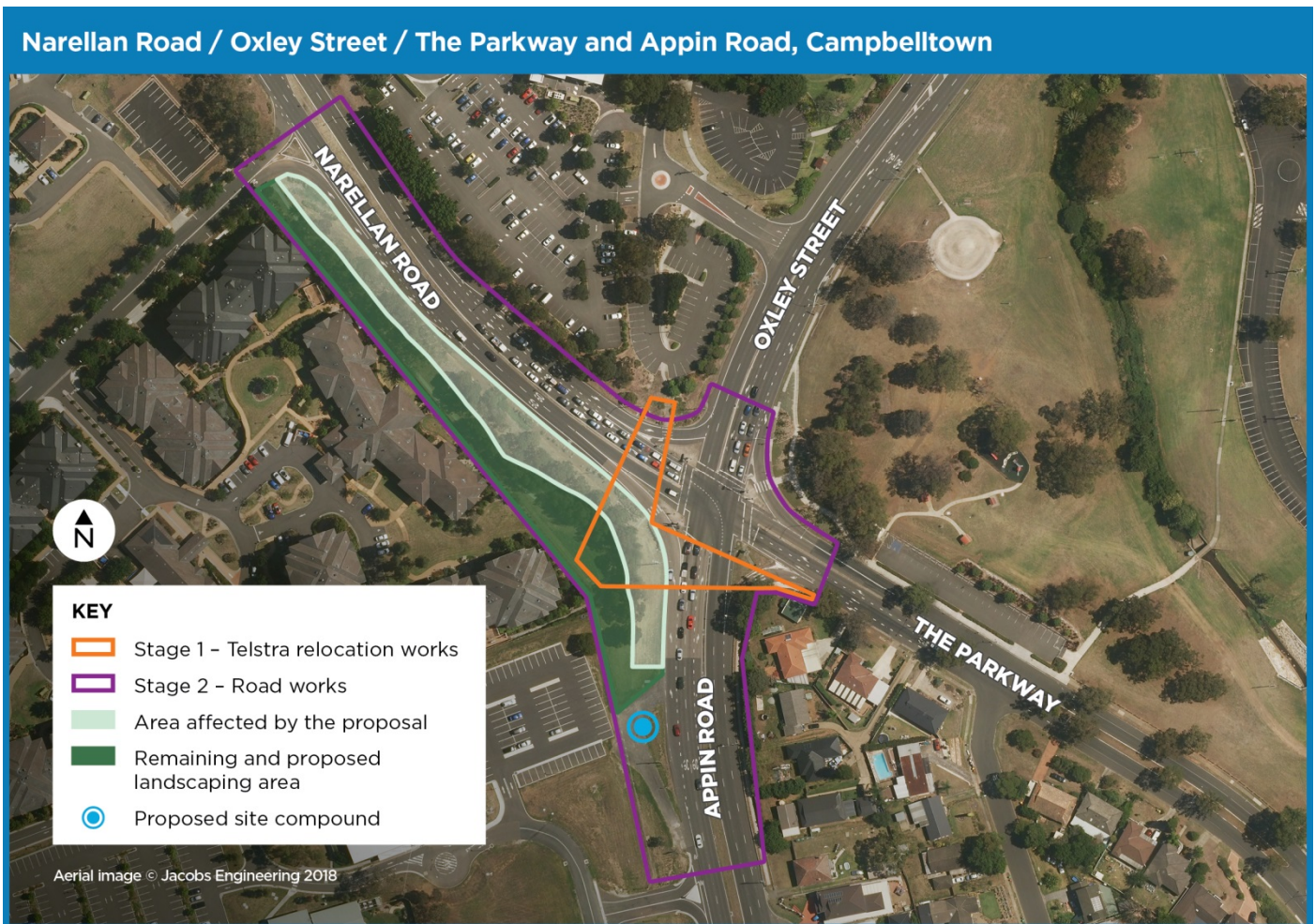
Lane closures will be in place and may affect travel times. Please keep to speed limits and follow signs and traffic controllers' directions. For the latest traffic updates, you can call 132 701, visit livetraffic.com or download the Live Traffic NSW App.

Contact

If you have any questions, please contact Johnny Curran, project manager, during business hours, on 1800 572 004 or pinchpoint@rms.nsw.gov.au.

For more information on our projects, visit rms.nsw.gov.au.

Thank you for your patience during this important work.



Translating and Interpreting Service

If you need an interpreter, please call the Translating and Interpreting Service (TIS National) on **131 450** and ask them to telephone Roads and Maritime Services on 1800 572 004

Arabic

إذا كنتم بحاجة إلى مترجم، الرجاء الاتصال بخدمة الترجمة الخطية والشفهية (TIS National) على الرقم **131 450** والطلب منهم الاتصال بوكالتكم على الرقم 1800 572 004 Roads and Maritime Services

Cantonese

若你需要口譯員，請致電 **131 450** 聯絡翻譯和口譯服務署 (TIS National)，要求他們致電 1800 572 004 聯絡 Roads and Maritime Services

Mandarin

如果你需要口譯員，請致電 **131 450** 联系翻译和口译服务署 (TIS National)，要求他们致电 1800 572 004 联系 Roads and Maritime Services。

Greek

Αν χρειάζεστε διερμηνεία, παρακαλείσθε να τηλεφωνήσετε στην Υπηρεσία Μετάφρασης και Διερμηνείας (Εθνική Υπηρεσία ΤΙΣ) στο **131 450** και ζητήστε να τηλεφωνήσουν Roads and Maritime Services στο 1800 572 004

Italian

Se desiderate l'assistenza di un interprete, prego telefonare al Servizio Interpreti e Traduttori (TIS National) al **131 450** chiedendo di contattare Roads and Maritime Services al 1800 572 004

Korean

통역사가 필요하시면 번역통역서비스 (TIS National) 에 **131 450** 으로 연락하여 이들에게 번으로 1800 572 004 Roads and Maritime Services 에 전화하도록 요청하십시오.

Vietnamese

Nếu cần thông ngôn viên, xin quý vị gọi cho Dịch Vụ Thông Phiên Dịch (TIS Toàn Quốc) qua số **131 450** và nhờ họ gọi cho Roads and Maritime Services qua số 1800 572 004