

Artists impression of the new bridge over Clarence River

## **New Grafton Bridge** Community update - November 2016

The NSW Government is funding the \$240 million additional crossing of the Clarence River at Grafton. This update outlines progress on work activities and information about the upcoming displays.

### **Recent building activities**

Major building work has started on the project. Activities that have been underway since September 2016 include:

- Survey, geotechnical and utility investigations
- Installing environmental controls including heritage and skink fencing and nest boxes
- Water and dust monitoring
- Site establishment
- Property condition inspections
- Removal of properties and structures
- Vegetation clearing and boundary fencing

### **Refinements to the approved concept design**

We always seek opportunities to improve the design, where possible, to get a better outcome for the community. The project team are finalising a number of refinements to the approved concept design and the Urban Design and Landscape Plan. Some of the key changes include:

- Refining road alignment to minimise impacts on existing properties
- Innovative bridge pier design to reduce flood impacts

- Minimise building footprint to retain existing streetscapes and landscaping
- Implementing additional anti-vandalism measures
- Developing stormwater quality initiatives including signs to discourage littering on the new shared path and bridge
- Landscape design to support skink habitat.

### **Urban Design and Landscape Plan**

The Urban Design and Landscape Plan includes the bridge designs, town entrance and streetscape strategies, noise barriers and headlight screens, lighting, signage, pedestrian and cyclist paths, and all other visual features.

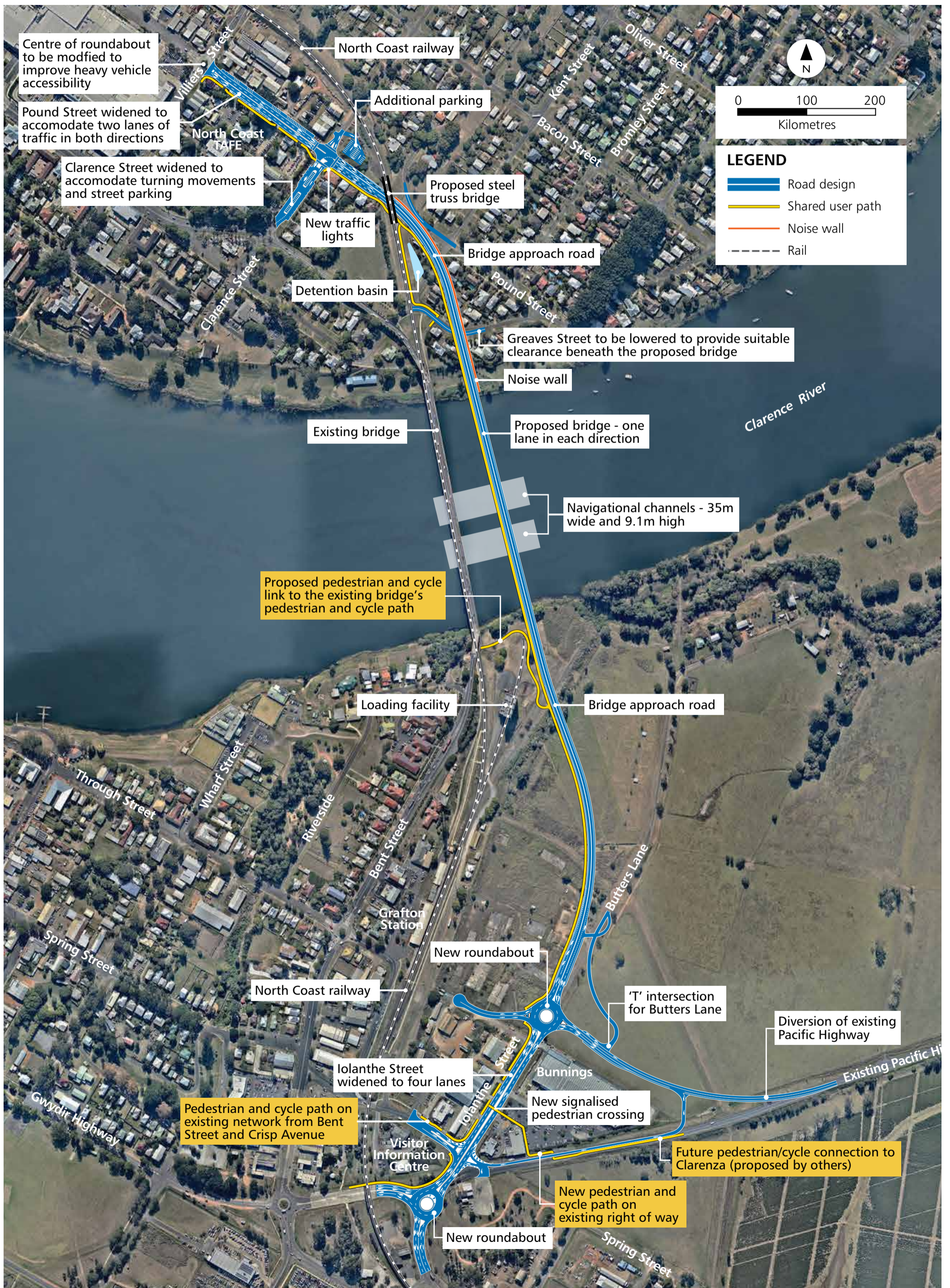
It has been prepared to harmonise the engineering designs with the existing environment and the character of Grafton. Key features included in the Urban Design are the rejuvenated Pound Street precinct, the look of the new bridge and other built elements, and proposed trees and gardens.

Jacaranda and Fig trees are recognised as an important part of Grafton's identity, and are incorporated into the Plan.

If you have any questions about the project please visit the project team at one of our drop-in displays. Details on the drop-in sessions and displays overleaf.

More information is available on the project website at [www.rms.nsw.gov.au/grafonbridge](http://www.rms.nsw.gov.au/grafonbridge)

# Project map with key features and improvements



## Have your say

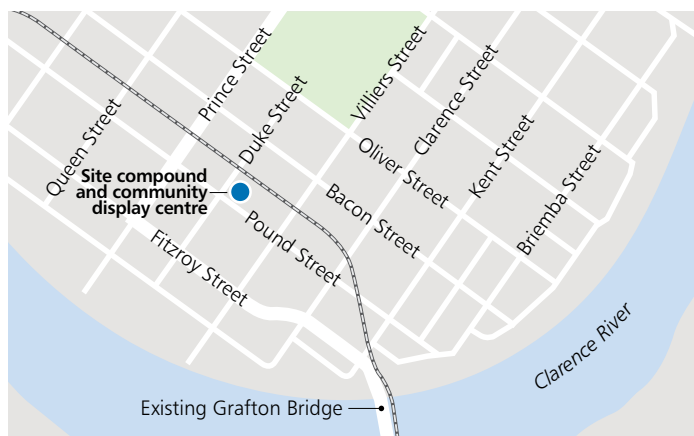
We welcome you to get in touch and provide us with your feedback. The refined design, traffic staging and Urban Design and Landscape Plan will be on display for comment until **Friday 16 December 2016**.

If you have any questions or would like to provide feedback please visit the project team at one of our drop-in displays or contact us on the below details.

## Community display centre

The community display centre at the main site compound (cnr Duke and Pound Streets, Grafton) will be open from Monday 28 November 2016.

It will be open Monday to Friday between 9am and 5pm for the community to view information and speak to the project team. You can access the display centre from the car park on Pound Street.



## For more information

For more information about the project, please contact us:

- 1800 918 759 (toll free)
- [graftonbridgecommunity@fultonhogan.com.au](mailto:graftonbridgecommunity@fultonhogan.com.au)
- Grafton Bridge Project, Roads and Maritime Services, PO Box 546 Grafton NSW 2460
- [rms.nsw.gov.au/graftonbridge](http://rms.nsw.gov.au/graftonbridge)

## Drop-in displays

Project staff will be available at the below locations to discuss the project and answer questions:

### Community Display Centre

Cnr Duke and Pound Streets, Grafton

- Monday to Friday between 9am and 5pm
- Thursday 1 December 9am to 7pm
- Saturday 10 December 9am to 12pm

### Clarence Valley Information Centre

Cnr Spring Street and Pacific Highway, South Grafton

- Saturday 10 December 9am to 12pm

### Grafton Shopping World

56 – 74 Fitzroy Street, Grafton

- Thursday 1 December 5pm to 7pm
- Saturday 3 December 9am to 12pm

## Display locations

Project information is on display at the following locations until Friday 16 December 2016:

### Grafton Bridge Community Display Centre

Cnr Duke and Pound Streets, Grafton

### Roads and Maritime Services

Pacific Highway office  
21 Prince Street, Grafton

### Service NSW Grafton

3 King Street, Grafton

### Grafton Library

126/128-144 Pound St, Grafton

### Clarence Valley Council

2 Prince Street, Grafton

### Clarence Valley Information Centre

Cnr Spring Street and Pacific Highway, Grafton

## Privacy

Roads and Maritime Services ("RMS") is subject to the *Privacy and Personal Information Protection Act 1998* ("PIIP Act") which requires that we comply with the Information Privacy Principles set out in the PIIP Act.

All information in correspondence is collected for the sole purpose of assisting in the assessment of this proposal/ delivering this project. The information received, including names and addresses of respondents, may be published in subsequent documents unless a clear indication is given in the correspondence that all or part of that information is not to be published. Otherwise RMS will only disclose your personal information, without your consent, if authorised by the law. Your personal information will be held by RMS at 76 Victoria St, Grafton NSW. You have the right to access and correct the information if you believe that it is incorrect.



November 2016  
RMS 16.544

