

# The new Grafton bridge

South Grafton Business Liaison Group

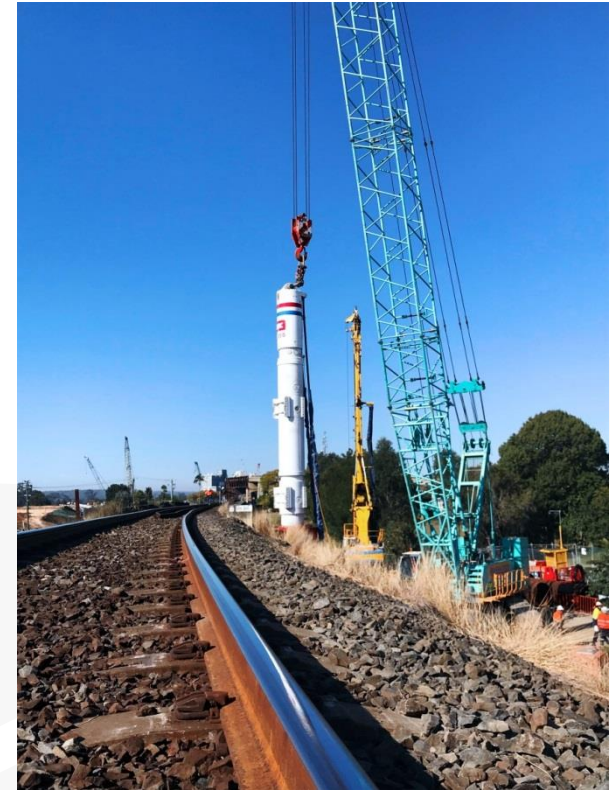
17 October 2018



# Agenda

---

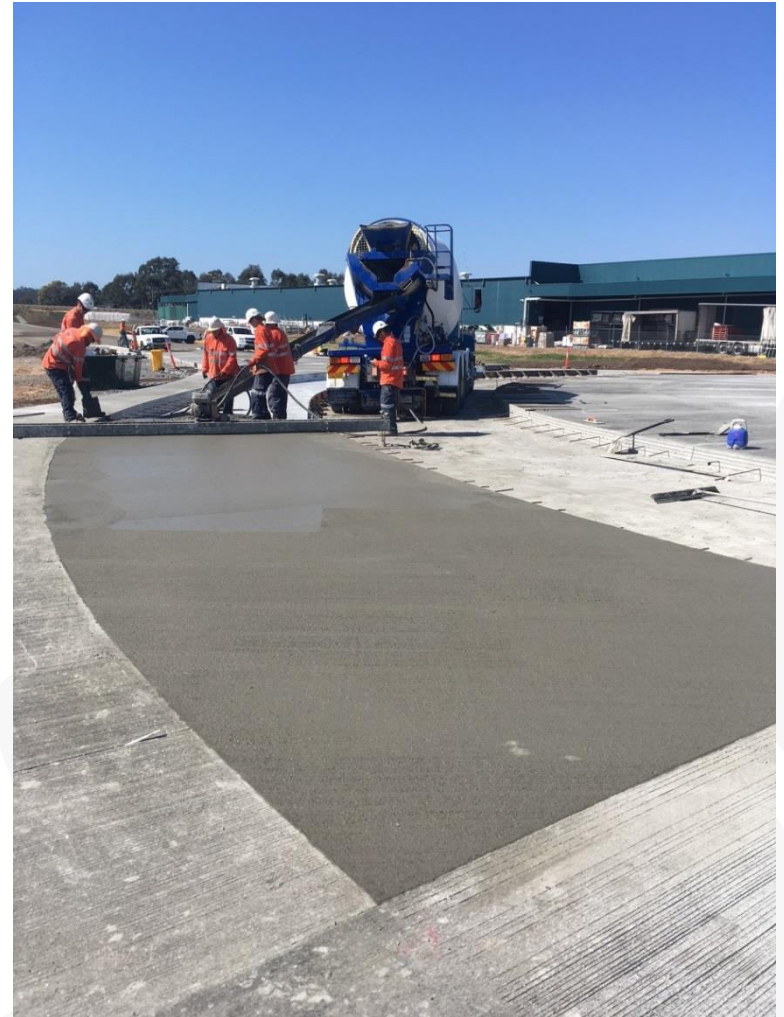
- Welcome and introduction
- Summary of the previous meeting
- Upcoming construction activities and out of hours work
- Questions and answers
- Next meeting.



Train passenger's view of piling occurring for the rail bridge (September 2018)

# Work update

- Minor storm water main work still required on Iolanthe, Spring and Through streets.
- Installation of lighting will soon occur at the Through Street roundabout.



The Through Street roundabout nearing completion  
(September 2018)

# Work update

- Lighting towers will remain in place near the Gwydir Highway for about nine months due to the multiple construction staging required for the roundabout
- Telstra relocation work is also required at the Gwydir Highway location. This will take place early next year.



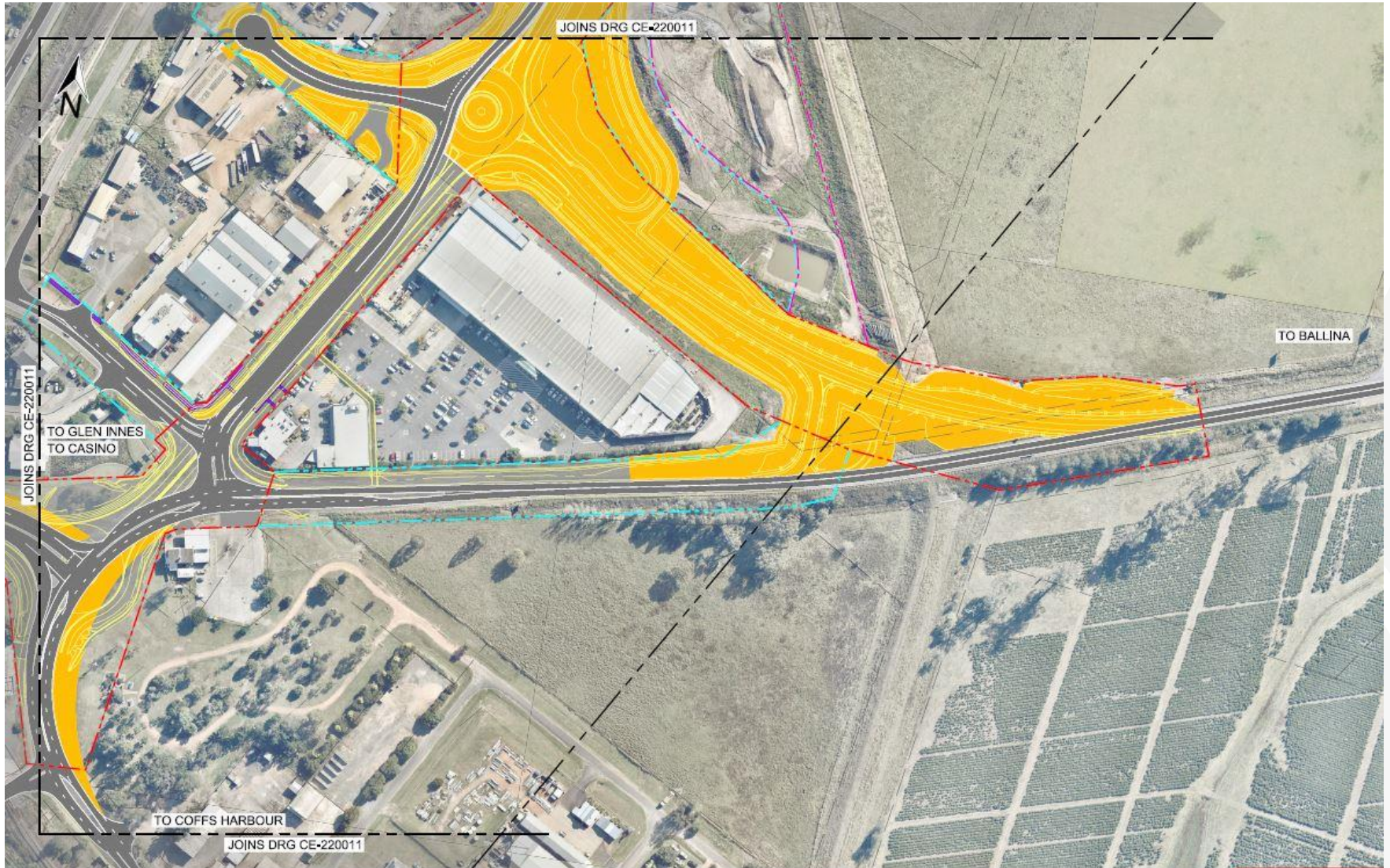
Another segment is lifted into place at pier 4 (October 2018)

# Upcoming changed traffic arrangements

Placing pipes for drainage near the northern tie-in with the existing Pacific Highway (September 2018)



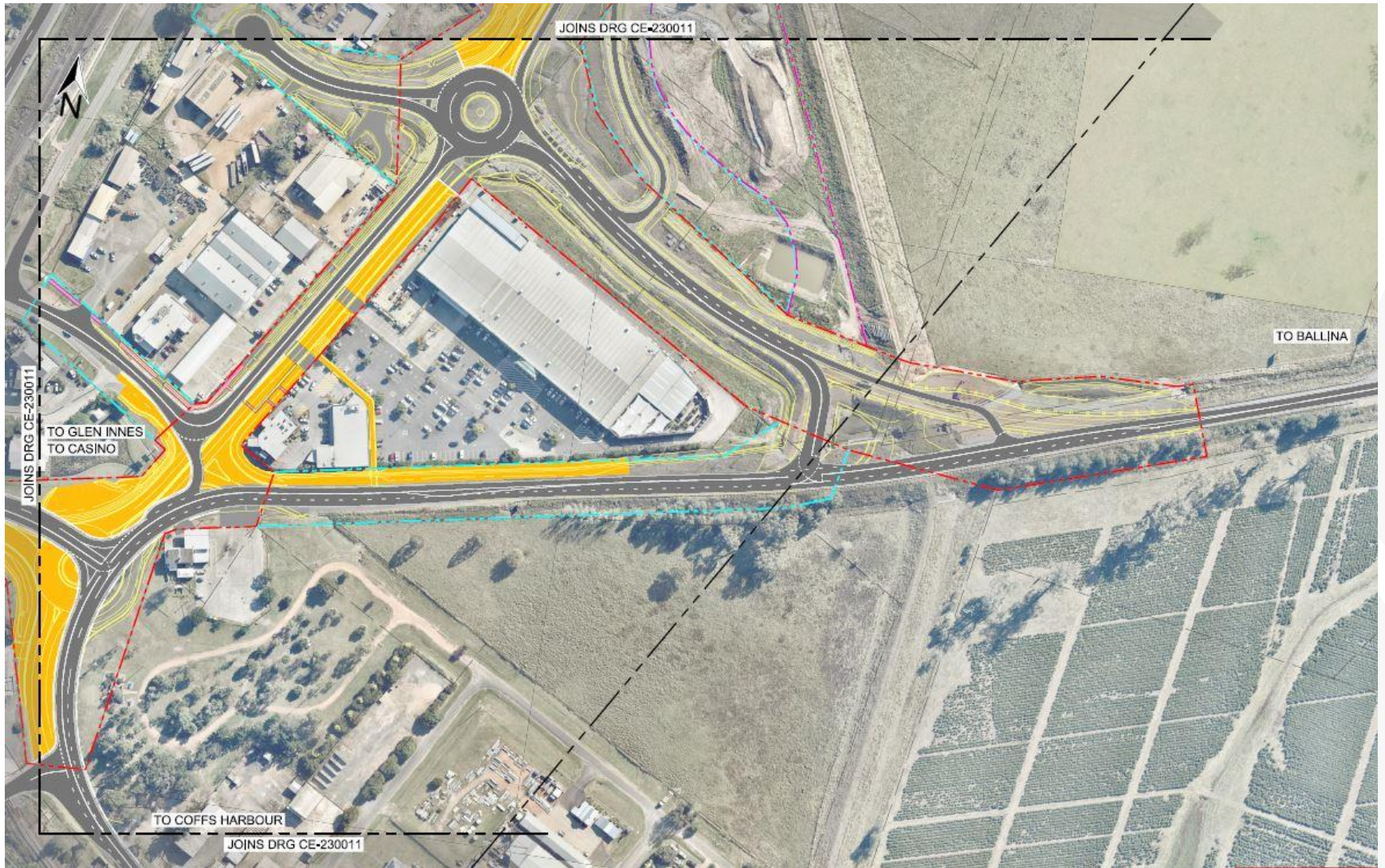
# October-December 2018 (weather permitting)



# Detail of northern tie-in intersection

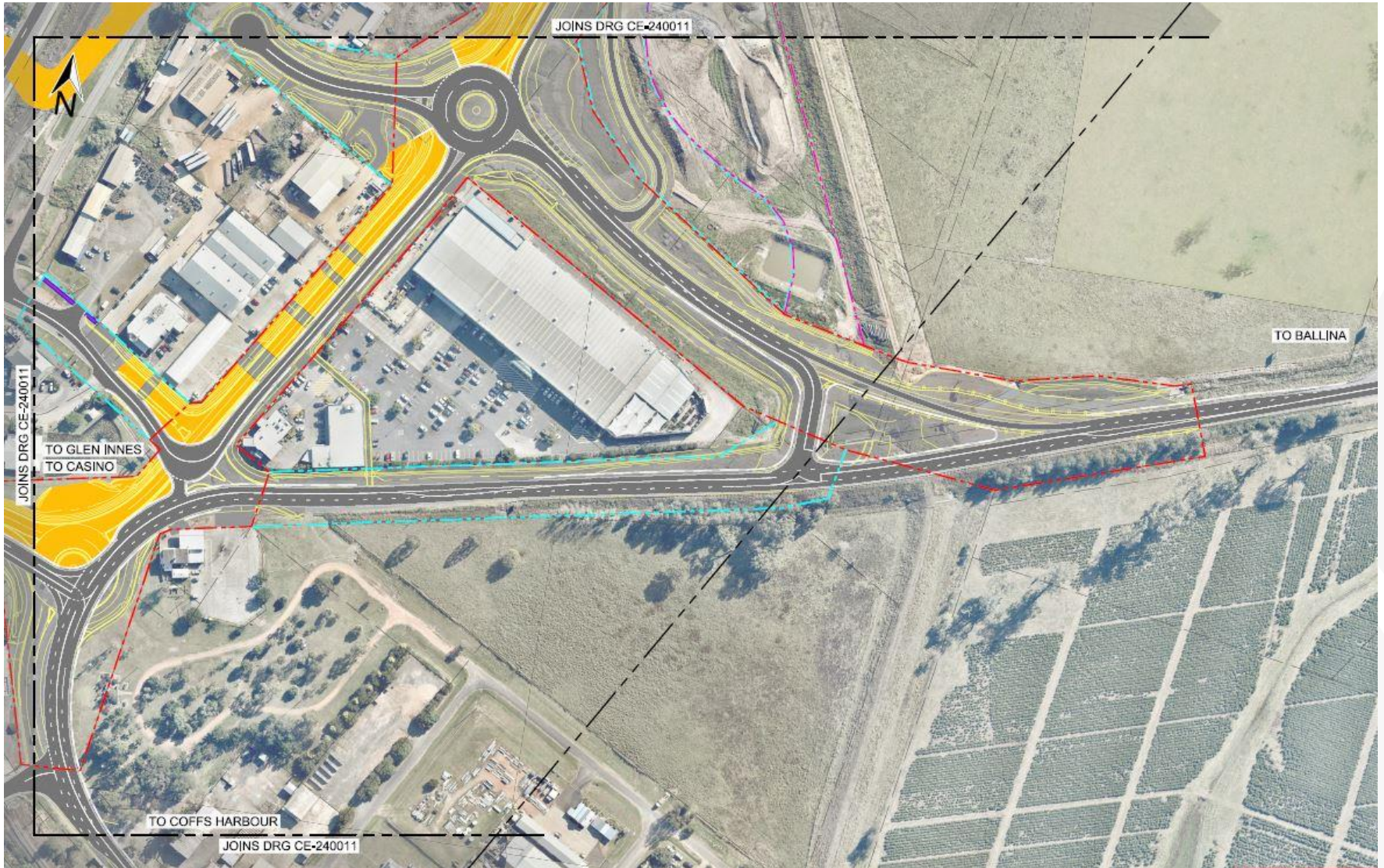


# December 2018-March 2019 (weather permitting)

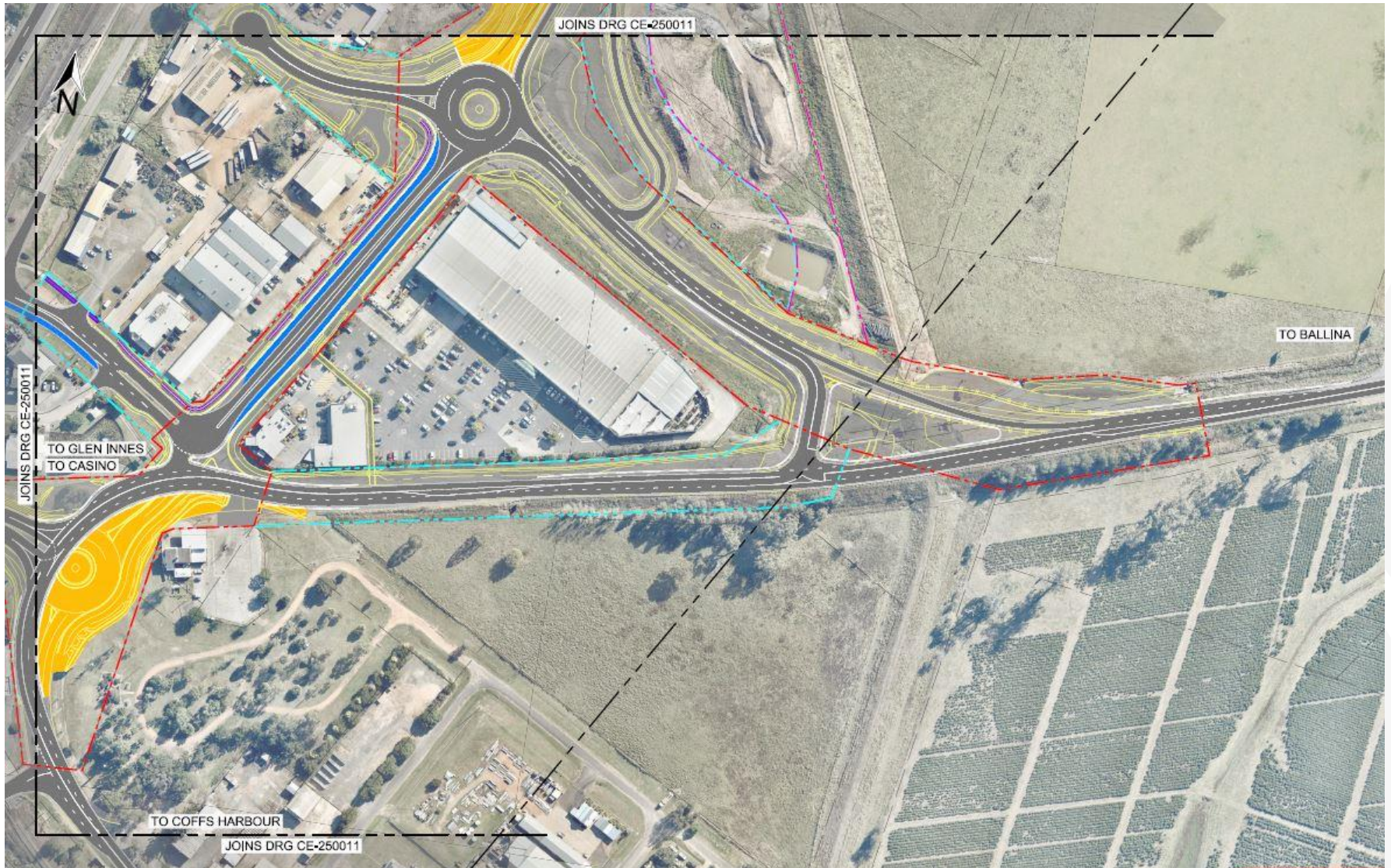




# March-May 2019, weather permitting



# May-August 2019 (weather permitting)



# Proposed temporary business signage

- Temporary signage on the highway during construction projects is usually black text on a yellow background. Signs are standard aluminium signs with class 1 reflective material so they can be seen at night
- Maximum width is 1800mm wide as any wider it becomes difficult to fit into the verge area and the sign becomes a safety hazard
- Height would be determined by the sign supports, text height for the approach speed and number of letters/words required for the sign
- An advanced sign placed at 500m would be within the 80km/h speed zone
- An advanced sign placed at 200m would be within the 60km/h speed zone.

# Proposed temporary business signage: all logos



# Or proposed temporary business signage:



# Or proposed temporary business signage:



# Conclusion

---

- Next meeting
- Further questions?



Aerial view of segments lined up in the pre-cast yard (September 2018)

# Contact information

---

For more information about the project please contact:

**Phone:** 1800 918 759 (toll free)

**Email:** [graftonbridgecommunity@fultonhogan.com.au](mailto:graftonbridgecommunity@fultonhogan.com.au)

**Mail:** PO Box 546 Grafton NSW 2460

Visit the Community Display Centre at:

- Corner of Duke and Pound streets Grafton
- Open Monday to Friday 8.30 am to 4.30 pm