

A 2 Grafton

+ves follows existing corridor - ~~less~~ impact on property

-ves too congested Fitzroy/Villiers 1/5 grid lock

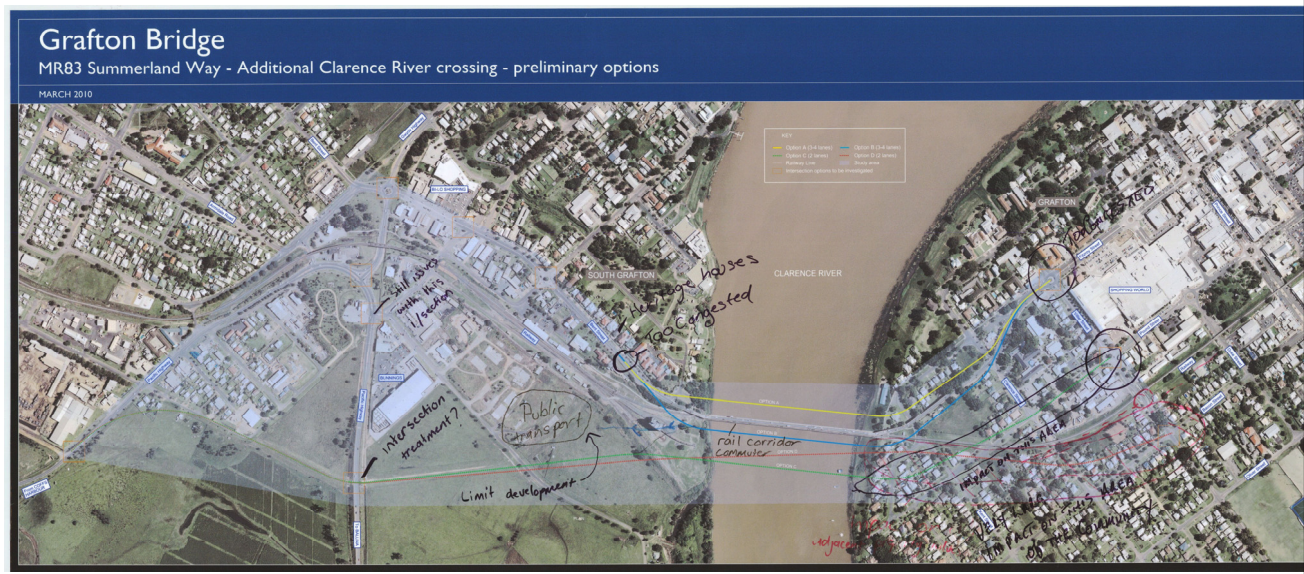
B

C +ve

D +ves Best for traffic

- ves
- issue with rail line
  - impacts on residents
  - flooding
  - access
- ves
- Bacon St/Villiers St 1/5 will end up being worse than anticipated for traffic
  - largest impact on residents
  - noise pollution in town
  - noise + reduction in air quality next to sports grounds
  - truck + large vehicles will cause problems.

Bridge (ALL OPTIONS) impact on Clarence Sailing Club



Option A Adv. Stn Grafton

DIS-ADV. Best St - already congested no improvement

Constraints  
Heritage houses on Best St  
Businesses  
Rail line

Option B +ves - +ves Same as opt. A

Option C +ves Less congestion Better option -ves Limit development (Industrial)

Option D Same as C