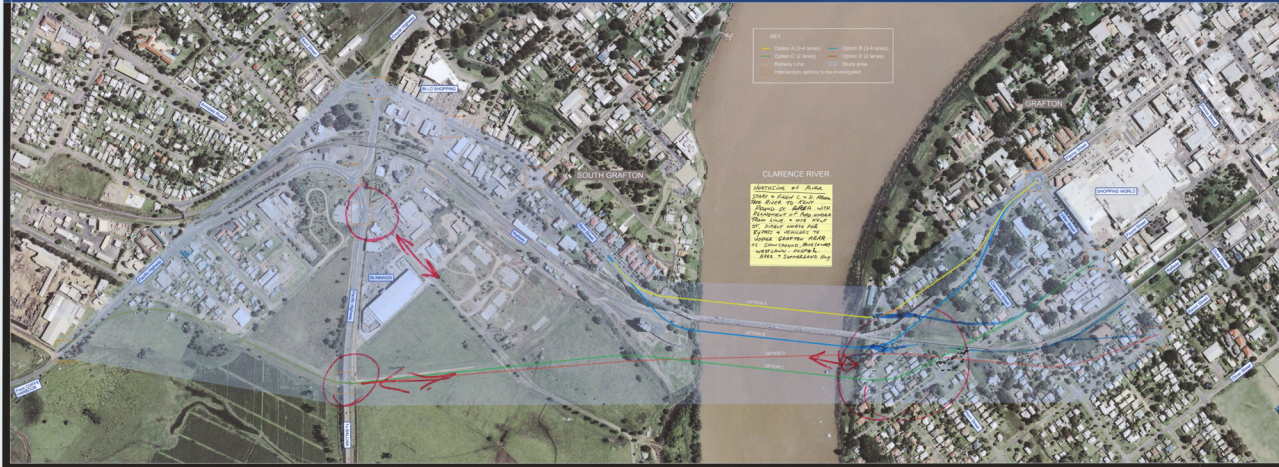


# Grafton Bridge

## MR83 Summerland Way - Additional Clarence River crossing - preliminary options

MARCH 2010



### Option C - Sth side TABLE 5 Option D constraints

- Flood levee wall
- Flood plain / access into Grafton.
- land acquisition
- huge stress on residents during construction.
- Pro
- keeps heavy vehicles out of Sth

### C & D TABLE 5

- look @ starting @ the highway near Burnings rather than near Notaras.
- option D → bring it closer to rail line.
- Option A & B → straighten them up on Ctm side.
- provide four lanes for all options.
- Shortening ~~opt~~ all options back closer to the river - <sub>southside</sub> Burnings / subway into Kent circus
- needs to be a study for future traffic to bypass Grafton.
  - in particular heavy vehicles

### Sth Side TABLE 5

#### Option A constraints

- widening Bent St <sub>East of Arch</sub> (Nursing Home, heritage houses).
  - flooding impacts.
- visual impact
- heritage value of this area - bendy bridge
- still necessary to have a band.
- Gridlock @ Through St. roadcut.
- Pros
- less construction required.
- railway
- gridlock Fitzroy / Villiers
- heritage houses -
- TAFE
- Proposed super clinic
- traffic delays during construction
- inadequate roadcuts
- Pro
- less impact on residential / property.

#### Option B.

- railway.

- heavy vehicles through residential areas including B Triples
- children's safety at risk - houses, sporting fields and schools
- under rail line (c)
- Carbon emissions increase in residential areas
- Noise impact
- Visual impact
- A highway dividing the town - <sub>small town</sub> lifestyle affected
- loss of a heritage area

→ look @ linking Clarence to Summerland Way.