

Additional crossing of the Clarence River at Grafton



Transport
Roads & Maritime
Services

SEPTEMBER 2012

Roads and Maritime Services is seeking your input on the six short-listed route options for an additional crossing of the Clarence River at Grafton by 10 October 2012.

Further investigations have been carried out on the six short-listed options announced in January 2012. These include technical and field investigations, traffic, flood and noise modelling and further design refinements to the six route options.

Details of the investigations and the assessment of the six options is available in the *Route Options Development Report* (September 2012).

Your feedback is important to us.

Community comments on the six options, the investigations undertaken and the outcomes of a value management workshop will help a decision on the preferred route option.

The short-listed options are:

- E** Cowan Street, South Grafton to Villiers Street, Grafton.
- A** New bridge parallel to and immediately upstream of the existing bridge connecting Bent Street, South Grafton and Fitzroy Street, Grafton.
- C** Junction of Pacific Highway and Gwydir Highway, South Grafton to Pound Street, Grafton.
- 11** Existing Pacific Highway north of South Grafton to Fry Street, Grafton.
- 14** Existing Pacific Highway north of South Grafton to North Street, Grafton via Kirchner Street.
- 15** Existing Pacific Highway north of South Grafton to Summerland Way north of Grafton, via Kirchner Street.

RMS does not have a preferred option for the additional crossing at this stage.

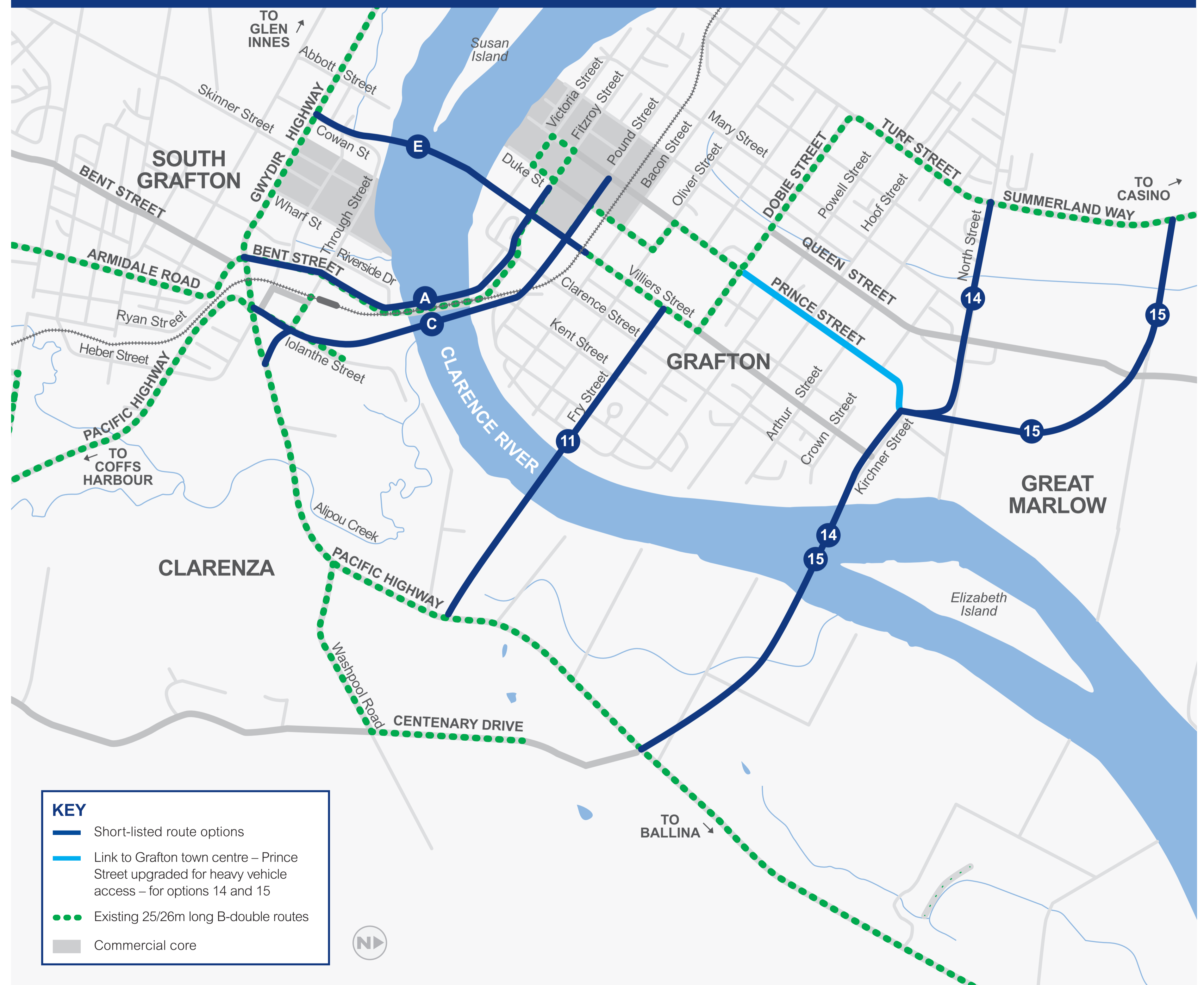
Those property owners potentially directly affected by the six options are being contacted directly. If you have any questions or concerns please get in touch with the project team.

Contact the project team:

Phone: 1800 633 332 (toll free)
Email: graftonbridge@rms.nsw.gov.au
Write to: Chris Clark, RMS Project Manager,
 PO Box 546 Grafton NSW 2460

Or visit the shop front at the Pacific Highway office for more information at 21 Prince Street, Grafton (opposite Westpac Bank), Monday to Friday, 8.30am to 4.30pm.

Six route options over the Clarence River, Grafton



Additional crossing of the Clarence River at Grafton

SEPTEMBER 2012

Upcoming community consultation activities

Get involved to help select the preferred option.

Staffed displays – Grafton Shoppingworld

Community updates are available to pick up.

Information displays

These are informal sessions. You are invited to drop in any time during the session. The team can take your feedback and answer any questions you may have about the project or how it may impact on you.

Maps and reports will be available to assist in discussions.

Public forum

The public forum will have a facilitator and community presentations. The audience can ask questions to the RMS team and any other presenter.

You can also watch a recording of the public forum shortly after the event on the Grafton Bridge project website.

Talk back radio

Tune into 2GF to hear members of the project team and stakeholders discuss key issues associated with planning for the additional crossing and answer questions from the community.

September 2012 community update

The September community update is now available on the project website or contact the project team. The update includes:

- A summary of the six route options for community comment.
- Route option maps.
- Upcoming community consultation activities.
- Summary of what's in the *Route Options Development Report*.
- Information on how a preferred route will be decided and an invitation to participate in that process.

Dates to mark in your calendar

Staffed display Grafton Shoppingworld	13 September 10am to 5pm
Public forum Grafton Community Centre	18 September 6pm to 8pm
Information display Grafton Community Centre	19 September 11am to 2pm and 3pm to 6pm
Information display South Grafton Ex-Servicemen's Club	25 September 10am to 2pm
Radio forum 2GF	27 September From 9am
Staffed display Grafton Shoppingworld	4 October 10am to 5pm
Nominations due Value Management workshop	10 October
Comment period closes Community feedback due	10 October

Value management workshop

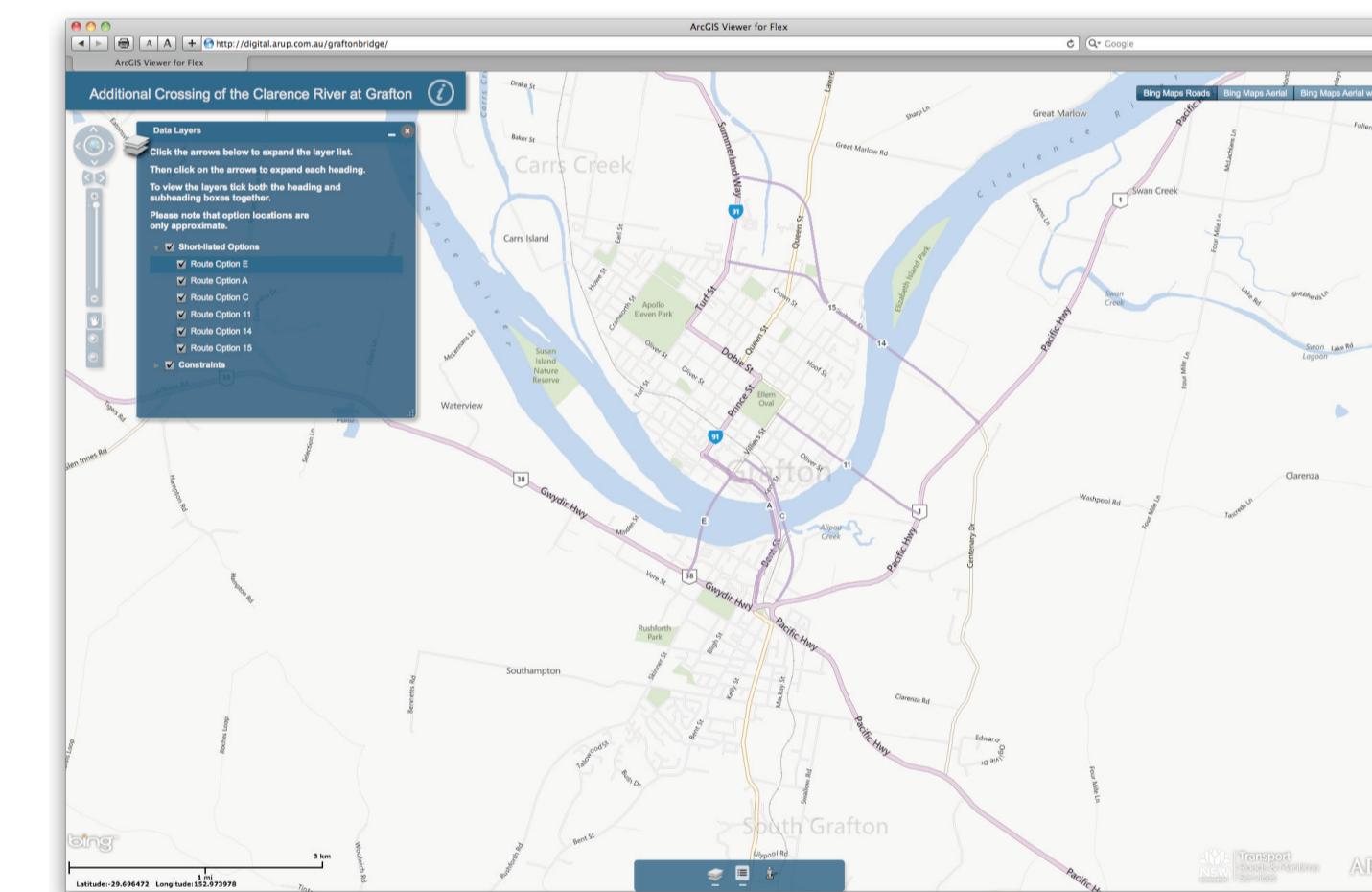
A workshop with participants from the project team, Council, government agencies, other key stakeholders and the community will be held on **Tuesday 23 and Wednesday 24 October 2012**.

At this workshop participants will assess the six route options based on the outcomes of the technical and environmental investigations (reported in the *Route Options Development Report*) and the issues raised in the submissions received from the display of the report.

The workshop will input to the identification of a recommended preferred option.

Interactive maps – take a look

Interactive maps on the website have been updated. The maps show the six options and the potential issues and constraints around them. The information is from the *Route Option Development Report*. Please click on the link from the project website.



Next step: to recommend a preferred route option

Each of these six options provide opportunities and challenges. The preferred route to cross the Clarence River and any road connections will be selected by assessing which option represents the most appropriate balance between functional, social, environmental, engineering and cost factors.

Comments received, the investigations carried out, and the outcomes of a value management workshop will all be inputs to the decision on a recommended preferred option, which is expected later in 2012.

Community feedback on the recommended preferred option will be invited. This feedback will be considered before a final decision is made on the preferred option.

