
7 Assessment of significance

7.1 Background to assessing significance

An assessment of heritage values encompasses a range of heritage criteria. The heritage values of a site or place are broadly defined as the 'aesthetic, historic, scientific or social values for past, present or future generations'.¹⁴⁵ This means a place can have different levels of heritage value and significance to different groups of people.

A detailed set of criteria for assessing the State's cultural heritage was published by the (then) NSW Heritage Office. These criteria are divided into two categories: nature of significance and comparative significance.

Heritage assessment criteria in NSW fall broadly within the four significance values outlined in the Australia ICOMOS Burra Charter.¹⁴⁶ The Burra Charter has been adopted by State and Commonwealth heritage agencies as the recognised document for guiding best practice for heritage practitioners in Australia.

The assessment criteria rely on the following four values:

- Historical significance (evolution and association)
- Aesthetic significance (scenic/architectural qualities, creative accomplishment)
- Scientific significance (archaeological, industrial, educational, research potential and scientific significance values)
- Social significance (contemporary community esteem).

Archaeological sites are most commonly assessed in terms of historical and scientific values, particularly by what a site can tell us about past lifestyles and people. There is an accepted procedure for determining the level of significance of an archaeological site.

The NSW Heritage Office issued a more detailed set of assessment criteria to provide consistency with heritage agencies in other States and to avoid ambiguity and misinterpretation. These criteria are based on the ICOMOS Burra Charter. The following State Heritage Register (SHR) criteria were gazetted following amendments to the *Heritage Act 1977* that came into effect in April 1999.

- Criterion (a) - an item is important in the course, or pattern, of NSW's cultural or natural history (or the cultural or natural history of the local area)
- Criterion (b) - an item has strong or special association with the life or works of a person, or group of persons, of importance in NSW's cultural or natural history (or the cultural or natural history of the local area)
- Criterion (c) - an item is important in demonstrating the aesthetic characteristics and/or a high degree of creative or technical achievement in NSW (or the local area)
- Criterion (d) - an item has strong or special association with a particular community or cultural group in NSW (or the local area) for social, cultural or spiritual reasons
- Criterion (e) - an item has potential to yield information that will contribute to an understanding of NSW's cultural or natural history (or the cultural or natural history of the local area)
- Criterion (f) - an item possesses uncommon, rare or endangered aspects of NSW's cultural or natural history (or the cultural or natural history of the local area)

¹⁴⁵ ICOMOS Burra Charter Marquis-Kyle & Walker 1992

¹⁴⁶ Australia ICOMOS 1999)

-
- Criterion (g) - an item is important in demonstrating the principal characteristics of a class of NSW's cultural or natural places; or cultural or natural environments; or a class of the local area's cultural or natural places; or cultural or natural environments.

7.2 Levels of heritage significance

Items, places, buildings, works, relics, movable objects or precincts can be of either local or State heritage significance, or have both local and State heritage significance. Places can have different values to different people or groups.

Local heritage items

Local heritage items are those of significance to the local government area. In other words, they contribute to the individuality and streetscape, townscape, landscape or natural character of an area and are important parts of its environmental heritage. They may have greater value to members of the local community, who regularly engage with these places and/or consider them to be an important part of their day-to-day life and their identity. Collectively, such items reflect the socio-economic and natural history of a local area. Items of local heritage significance form an integral part of the State's environmental heritage.

State heritage items

State heritage items, places, buildings, works, relics, movable objects or precincts of State heritage significance include those items of special interest in the State context. They form an irreplaceable part of the environmental heritage of New South Wales and must have some connection or association with the State in its widest sense.

The following evaluation attempts to identify the cultural significance of potential archaeological relics with the Project Area. This significance is based on the assumption that the site contains intact or partially intact archaeological deposits.

7.3 Statements of significance (established heritage items)

Sections 2 to 6 of this assessment established that the project area is associated with 76 known heritage items; these items have been previously assessed in the past and are registered on the SHR and Clarence Valley Local Environment Plan (CVLEP) with detailed statements of significance. This assessment has not revealed any historical or archaeological information which alters the significance of these items. Consequently, it is not necessary to re-assess their significance; however the statements of significance are presented in Table 26 as they appear on the SHR and in the community based heritage study.¹⁴⁷

¹⁴⁷ Gardiner 2010

Table 26: Statements of significance for established heritage items

Biosis ID	Heritage item details	Significance assessment criteria							Level of significance	Statement of significance
		A	B	C	D	E	F	G		
Conservation Areas										
C3	Grafton Conservation Area (C3) (CVLEP 2011, NT, NCREP, RNE)	X	X	X	X	X	X	X	Local	Grafton is a fine example of a subtropical mid 19th century river port, city and pastoral seat. It contains a fine group of civic and ecclesiastical buildings and many spacious timber houses which display both craftsmanship in detail and the ubiquitous verandah of northern Australia. The magnificent canopies of fig trees, Jacarandas and camphor laurel provide shade and colour while serving to link the natural and man-made features of the city.
C7	South Grafton Conservation Area (C7) (CVLEP 2011, NT, NCREP, RNE)	X	X	X	X	X	X	X	Local	
Construction works zone boundary – Grafton										
CZB01	129 Villiers Street, Grafton (Villiers Street Residential Group 2; CVLEP 1848)			X				X	Local	Single storey weatherboard federation style residence with bull-nosed verandah and gable to the front decorated with battens. Beneath the gable the wall above the front window has been decorated with a geometrically designed raised moulding. The window itself is covered by an awning. Steeply pitched hipped iron roof. Verandah posts are turned with simple decorative brackets. A picket fence faces the street and steps lead from the roadway to the front gate. Mature plantings to the rear of the garden and in the street. The residence makes a significant contribution to Villiers street. It appears to be substantially in tact. There is no car access from Villiers Street. Interior not viewed in this study.
CZB02	127 Villiers Street, Grafton (Villiers Street Residential Group 2; 1847)			X				X	Local	This well presented residence is a good representative example of a weatherboard clad Federation building. In addition it is one of a number of buildings whose age, bulk and form contribute to the Villiers Streetscape which extends from the corner of Dobie Street to Powell street. The street scape, of domestic dwellings, is particularly intact.

Biosis ID	Heritage item details	Significance assessment criteria							Level of significance	Statement of significance
		A	B	C	D	E	F	G		
CZB03	125 Villiers Street, Grafton (Villiers Street Residential Group 2; I846)	X		X					Local	This weatherboard clad dwelling with corrugated iron roof and verandah to the front and side is significant as one of a number of buildings whose age (c1900), bulk and form make a contribution to the Villiers Streetscape, from the corner of Dobie Street to Powell street. It has architectural significance with the retention of some original elements.
CZB04	123 Villiers Street, Grafton (CVLEP: Villiers Street Residential Group 2; I845).			X				X	Local	It is significant as one of a number of late 19th century and early 20th century residences whose age, bulk and form; make up the Villiers Streetscape, from the corner of Dobie Street to Powell street.
CZB05	106 Dobie Street, Grafton (CVLEP I537)	X		X				X	Local	This pair of interwar bungalows shows subdivision and development in this section of Dobie Street c1930. Together they make an aesthetic contribution to Dobie Street. They are largely intact and are representative of their type.
CZB06	108 Dobie Street, Grafton (CVLEP I538)	X		X				X	Local	This pair of interwar bungalows shows subdivision and development in this section of Dobie Street c1930. Together they make an aesthetic contribution to Dobie Street. They are largely intact and are representative of their type.
CZB07	Fisher's Drain: Corner of Villiers and Dobie Streets (CVLEP I535)	X				X			Local	Fisher's drain demonstrates early public works in Grafton and illustrates the need to drain low land in the vicinity of Fisher Park, an area subsequently subdivided into Fisher Park and the Grafton Showground. It is a significant archaeological relic and plans of the drain (GCC No 1 civil/drainage works plan) are also a significant moveable heritage item. It has the ability to be interpreted and to provide information on the development of Fisher Park and public works.

Biosis ID	Heritage item details	Significance assessment criteria							Level of significance	Statement of significance
		A	B	C	D	E	F	G		
CZB08	Showground Complex: Corner of Villiers and Dobie Streets, Grafton (CVLEP; I116 & I533)	X		X	X				Local	While moved from its original location at the Grafton racecourse this barn/pavilion is an important surviving example of 1880s architecture based on a "timber and tin" construction. Its relocation to the showground in 1905 is itself unusual and its authentic restoration in 1988 shows its social significance to the Clarence Valley community who have used the pavilion for both entertainment and industry over the past century. It may have significance to the State.
CZB09	30-32 Villiers Street, Grafton (Villiers Street Residential Group 1; CVLEP I132; NT R2624)	X		X				X	Local	This pre 20th century sandstock brick building incorporating two semi detached cottages makes a historically significant contribution to Grafton City. Brick buildings such as these are rare in a town where the preferred building material was timber. With its ornamental barge board, and street facing verandah it makes a significant aesthetic contribution to Villiers Street. The design is perhaps of pattern book derivation.
CZB10	"Ravensford", 36 Villiers Street, Grafton (Villiers Street Residential Group 1; CVLEP I841; NT R2623).	X	X	X		X	X	X	Local	This attractive two storey residence has remarkably intact external details and is set within a garden of mature trees on an important corner site. It is significant historically for its association with Captain Greenway (c 1860) and later the Henson family who owned a cordial factory next door. It is representative of the quality two storey residences built in the period 1890 -1910 and can be compared with Lormont (16 Victoria Street). The site is likely to archaeological potential.
CZB11	Former residence "Dunvegan" 47 Pound Street, Grafton (CVLEP I115; NT R2657)	X	X					X	Local	The Clarence Valley is noted for its timber industry which initially harvested soft woods like cedar and later hardwoods for construction purposes. Dunvegan an imposing two storey timber clad residence, unusually large in scale and in largely original condition, tells of the local use of this timber. Built for the Powell family in 1905 and extended in 1926 it presents a variety of Victorian and Federation elements including iron lace balustrading and valances and carved barge boards with fretted work at the apex. It is now in public ownership and forms part of the Grafton TAFE complex. Buildings of this quality and size are becoming increasingly rare in Grafton. It is likely to be significant to the State.

Biosis ID	Heritage item details	Significance assessment criteria							Level of significance	Statement of significance
		A	B	C	D	E	F	G		
CZB12	Coronation Plaque, Clarence Street, Grafton (CVLEP I516)	X						X	Local	This plaque and the associated street plantings are historically significant showing the warmth of feelings for the new young Queen Elizabeth in Grafton in the 1950s. It also demonstrates the continuing desire of Council to beautifying the town through street plantings, a commitment begun in 1874 when Council adopted a by-law for the planting of street trees.
CZB13	Street trees: Jacaranda, Brachychiton & Ficus sp. over 3 metres (CVLEP I135)	X	X	X	X				Local	Tree planting was introduced as early as 1881 to beautify the town and also to provide much needed shade. Street plantings have also been undertaken to commemorate particular historic events. Street trees have become synonymous with Grafton and make a significant contribution in depicting the history and aesthetics of the town. As commemorative monuments they have a specific relationship to people and historical events in Grafton and are important to the Grafton community as a whole.
CZB14	28 Clarence Street (Clarence Street Residential Group 1; CVLEP I522)	X		X				X	Local	This well maintained and restored Federation Cottage makes a contribution to Clarence street. Its history has been well documented revealing it was associated with E. Hockey who owned the Rosary at 41 Bacon Street. Walter Walker was its first owner.
CZB15	26 Clarence Street (Clarence Street Residential Group 2; CVLEP I520)	X		X				X	Local	A modest Federation weatherboard clad cottage with several original elements, which contributes to the domestic scale of Clarence Street. It is located with the Grafton Urban Conservation Area and is historically significant showing the continuing development of Grafton city.
CZB16	12 Clarence Street (Clarence Street Residential Group 1; CVLEP I519)	X		X				X	Local	This c1900 or earlier weatherboard clad dwelling with original joinery contributes to Clarence streetscape. Set back on the block on the same alignment as 10 Clarence Street it tells of the growth of Grafton. Both dwellings have a pleasing backdrop of mature trees.

Biosis ID	Heritage item details	Significance assessment criteria							Level of significance	Statement of significance	
		A	B	C	D	E	F	G			
CZB17	10 Clarence Street (Clarence Street Residential Group 1 ; CVLEP I518)	X		X					X	Local	This single storey weatherboard clad bungalow c1900, is set back on a large block with a back drop of mature trees. It may be a pair with 12 Clarence Street. It is historically significant demonstrating growth in Grafton and contributes to the city's social history.
CZB18	31 Pound Street, Grafton (CVLEP I1694)			X				X	X	Local	It is rare to find Spanish Mission style cottages in Grafton, particularly those with barley curl columns supporting the front porch. This cottage is representative of its type and contributes to the historic fabric of Grafton. It can be compared with 14 Pound Street.
CZB19	King George V Plaque: Pound Street, Grafton (CVLEP I688)	X							X	Local	This plaque, and the associated street plantings, are historically significant showing the warmth of feelings for the English particularly King George V in Grafton in 1935. It also demonstrates the continuing desire of Council to beautifying the town through street plantings, a commitment begun in 1874 when Council adopted a by-law for the planting of street trees.
CZB20 & 21	Grafton Railway Viaduct (I687/I514)	X	X	X	X	X	X	X	X	Local	The railway viaducts are architecturally significant for the first use of precast reinforced concrete beams and of concrete Art-Deco arches over seven roads in Grafton. They have historical significance as part of the final link in the North Coast railway linking Brisbane and Sydney and for their social and commercial benefit to passenger and freight transport by rail Heritage Act - s.170 In addition to listing on the CVLEP and containment within the Grafton Urban Conservation area, the viaducts are listed on a s.170 NSW State agency (SRA) heritage register
CZB22	26 Kent Street, Grafton (Kent Street Residential Group 2 CVLEP I627)			X				X	X	Local	Inter war bungalow set high above the flood level. This building demonstrates the importance of building with flooding in mind.
CZB23	24 Kent Street, Grafton (Kent Street Residential			X				X	X	Local	While raised about flood levels, this is a beautifully maintained and good representative example of an interwar bungalow. It was possibly built at the same time as no 26 Kent street and makes a significant contribution to the streetscape.

Biosis ID	Heritage item details	Significance assessment criteria							Level of significance	Statement of significance	
		A	B	C	D	E	F	G			
	Group 2; CVLEP I626)										
CZB24	22 Kent Street, Grafton (Kent Street Residential Group 2; CVLEP I625)	X		X				X	X	Local	While raised above flood levels, this is a representative example of an inter-war bungalow with much decorative timberwork. It is one of group of three similar residences in Kent street and compliments the streetscape. It is also significant for its association with Mr B. C. Eggins who was Mayor of Grafton from 1932 -1935.
CZB25	18 Kent Street, Grafton (Kent Street Residential Group 1; CVLEP I624)	X		X				X	X	Local	A typical example of a late Victorian residence (c1890) with vertical weatherboards cladding the exterior. It with houses from 12 -18 makes a significant contribution to the Kent Street landscape and to the historic fabric of Grafton.
CZB26	16 Kent Street, Grafton (Kent Street Residential Group 1; CVLEP I623)			X					X	Local	A representative example of a Californian Bungalow which along with houses at 14 and 18 contributes to the domestic scale of this section of Kent Street.
CZB27	14 Kent Street (Kent Street Residential Group 1; CVLEP I622)	X		X					X	Local	This cottage is representative of the late Victorian to Federation style with a steeply pitched roof and use of traditional elements and materials. The projecting gable is likely to have been a later addition. Along with cottages at nos 16 and 18 it contributes to the Kent Street streetscape.
CZB28	12 Kent Street, Grafton (Kent Street Residential Group 1; CVLEP I621)	X		X					X	Local	While modified with the addition of a brick verandah this Californian bungalow contributes to the form and scale of Kent Street. It is one of a group of dwellings extending from 12 - 18 Kent street which demonstrates residential development in Grafton from the 1890s to the 1930s.

Biosis ID	Heritage item details	Significance assessment criteria							Level of significance	Statement of significance	
		A	B	C	D	E	F	G			
CZB29	14 Pound Street, Grafton (CVLEP I693)	X		X				X		Local	This residence is aesthetically pleasing and makes use of its corner location. Built c1950 in liver coloured brick it is an unusual addition to the architecture of Grafton which at that time saw the construction of mainly weatherboard or fibros cement clad buildings. It features elements of the Spanish Mission style with its use of triple arches over the porches and terra cotta tiled roof. It is set on a large block with a mature garden.
CZB30	'Clarendon' 13 Pound Street, Grafton (CVLEP I692)	X		X						Local	This substantial single storey weatherboard bungalow with hipped iron roof extending over deep front and side verandahs and brick chimneys with corbelled tops contributes to the historic fabric of Grafton. While the bungalow is partially obscured from the street by an attractive garden the exterior with its tall chimneys makes an aesthetic contribution to Pound Street. It is worthy of further historical research.
CZB34	1 Pound Street, Grafton (CVLEP I690)	X		X						Local	Located on the riverbank this substantial Californian bungalow styled inter- war residence characterises properties in the Dovedale precinct. Its gardens and lawns extend to the road verge and the property boundary is defined only by a low fence. With its red tiled roof, intact chimney, wide verandah and casement windows it appears to be in all most original condition and is representative of its type.
CZB35	Glyndon Private Hospital (former): 4 Greaves Street, Grafton (CVLEP I616)	X	X		X					Local	This Californian bungalow style residence is of historical importance as a second generation home on the original Dovedale property. It is associated both with Mrs Loxton (daughter of WAB Greaves) and later Matron Blackwell of the Glyndon Private Hospital. The hospital was well known in the Grafton district and is likely to be socially significant to the community who spent time there.
Construction works zone boundary - South Grafton											
CZB36	Grafton Rail and Road Bridge (SHR1036; NCREP Schedule 2; SRA237;							X		State	This bridge is a double-deck road/rail structure, the only one of its type in NSW and is acknowledged as significant to the State. It has a lift span to allow passing of river traffic but this is no longer used. It presents a commanding visual reminder of rail and road to residents of Grafton and is historically significant and its opening in 1932 completed the

Biosis ID	Heritage item details	Significance assessment criteria							Level of significance	Statement of significance	
		A	B	C	D	E	F	G			
	CVLEP I134)									<p>North coast standard gauge line between Sydney and Brisbane, avoiding the winding road route via Tenterfield. The viaduct along with the wharf remains are important relics of the development of the north coast railway. The viaduct is representative of similar structures constructed at a range of locations, many of which have been replaced.</p> <p>This bridge is a double-deck road/rail structure, the only one of its type in NSW. There is a lift span to allow passing of river traffic (no longer used). It presents a commanding visual reminder of rail and road to residents of Grafton. Opening of the bridge in 1932 completed the North coast standard gauge line between Sydney and Brisbane, avoiding the winding route via Tenterfield.</p> <p>The viaduct along with the wharf remains are important relics of the development of the north coast railway. The viaduct is representative of similar structures constructed at a range of locations, many of which have been replaced.</p>	
CZB3 7	Grafton City Railway Precinct (SHR No.1154; ARTC s.170 Register; CVLEP I372)	X		X	X			X	X	State	<p>Grafton City Railway Precinct is of State historic significance as a former major railway administrative centre for the North Coast. The extant refreshment rooms is a unique structure on the NSW rail system built for the movement of troops during World War II and remains as an important reminder of the site's role in the Australian war effort and the role played by rail in moving troops around the country. The extant barracks building is representative of a series of similar barracks buildings constructed throughout the NSW railway system for train crews to rest between shifts. The office block demonstrates the former administrative role of the site. Overall, the significance of the railway precinct has been compromised by modern buildings, the demolition of the extensive locomotive servicing depot and all other original buildings.</p>

Flood mitigation works - Grafton

Biosis ID	Heritage item details	Significance assessment criteria							Level of significance	Statement of significance
		A	B	C	D	E	F	G		
FMW 01	"Avoca", 1 Fitzroy Street, Grafton (CVLEP I561)	X		X		X	X		Local	This unusual and interesting house is of both historic and aesthetic significance. Located on the river bank it has great visual appeal and can be clearly seen from the Grafton Rail and Road Bridge. Dating from the 1880s period with decorative elements from the 1890s its carved and fretted bargeboards are considered some of the best of Grafton's collection. It has been drawn by local artist G. Payne and appears in his publication "A Line on Grafton". Historically it is significant for its association with the Grafton bank manager Edward Chapman Lewington.
FMW 02	3 Fitzroy Street, Grafton (Fitzroy Street Residential Group 2; CVLEP I562)	X		X			X		Local	This house is one of four dwellings that make a significant contribution to the northern riverbank. All are visible from the bridge and mark one's arrival at historic Grafton. The turret on this house, which is viewed from the riverbank, is particularly beautiful and unusual. The turret is one of only two known in Grafton. The house can be compared with Abbotsford, 3 Alice Street. The site is likely to have archaeological potential and makes a significant contribution to the Grafton Urban Conservation Area.
FMW 03	5 Fitzroy Street, Grafton (Fitzroy Street Residential Group 2; CVLEP I563)	X		X		X	X		Local	This house is one of four dwellings that make a significant aesthetic contribution to the northern riverbank. They are visible from the bridge and mark one's arrival at historic Grafton. The house is architecturally significant for its use of lath and plaster and may be a pair with seven. Historically it demonstrates early settlement on a prized riverbank location.
FMW 04	'Riverview': 7 Fitzroy Street, Grafton (Fitzroy Street Residential Group 2; CVLEP I565)	X		X		X	X		Local	This house is one of four dwellings that make a significant aesthetic contribution to the northern riverbank. All are visible from the bridge and mark one's arrival at historic Grafton. With its lath and plaster walls it is architecturally significant and the site is likely to contain archaeological material. It may be a pair with number 5 Fitzroy street.
FMW 05	Footpath Sign, (Clarence Street, CVLEP I515)	X			X		X		Local	This footpath street sign is historically significant demonstrating a phase in civic development which considered alternative forms of directions. Considered unusual and appreciated by some members of the Grafton community. This form of signage is rare in

Biosis ID	Heritage item details	Significance assessment criteria							Level of significance	Statement of significance	
		A	B	C	D	E	F	G			
										Grafton.	
FMW 06	St. Mary's Church, 7 Victoria Street, Grafton (CVLEP I805)	X		X	X				X	Local	St Mary's Church is architecturally and historically significant. Architecturally it showcases the Gothic style designed by the Sydney architect Mr A. E. Bates. It, with the 1911 two storey Presbytery, St Mary's College, Convent and Hall, forms an important and impressive block of ecclesiastical and educational buildings extending along the river bank from Villiers to Clarence Street. Historically it demonstrates the long presence of the Roman Catholic community in Grafton and its desire to rebuild a "fine edifice" following fire which destroyed their wooden church in 1913. It is likely to be socially significant to the Catholic community of Grafton.

Biosis ID	Heritage item details	Significance assessment criteria							Level of significance	Statement of significance
		A	B	C	D	E	F	G		
FMW 07	Roman Catholic Presbytery: 57 Victoria Street, Grafton (CVLEP 1804)	X	X	X	X				Local	This substantial 1911 Presbytery is an integral part of a group of ecclesiastical and educational buildings which were established by the Roman Catholic church in Victoria Street. It is historically significant for its association with the development and growth of the Roman Catholic church in Grafton and demonstrates the need for permanent accommodation for priests in a location that was near the main church. It is likely to be socially significant to the Roman Catholic community of Grafton.
FMW 08	Flats (Former St Mary's College; 9 Victoria Street, Grafton (CVLEP 1806)	X	X	X	X			X	Local	This college building is significant for its association with the Sisters of Mercy, who have played a large role in Catholic Education on the north coast of NSW. It is also associated with the Sydney Architect A.E. Bates who worked for various Roman Catholic Dioceses and designed St Mary's church next door. It is historically significant demonstrating the desire for Catholic schooling in the Grafton area. With other church schools it reinforces the statement that the City of Grafton was a major centre of education on the north coast.
FMW 09	Covent: 2 Villiers Street, Grafton (CVLEP 1835)	X	X	X	X				Local	The Convent is significant for its association with the Sisters of Mercy, an organisation, which has played an important educational and pastoral role in the Clarence and Richmond River districts. It is historically significant for its early association with the growth of the Catholic church on the Clarence River and is of social significance to those students and staff who passed through its doors. While the building has been altered substantially from its original 1884 design it is still an impressive c1913 style building, particularly when viewed from the river (south).
FMW 10	RTA Regional Office: 31 Victoria Street, Grafton (CVLEP 1811; RMS S.170)	X		X				X X	Local	The original part of the Regional Office is locally significant as a good, very late example of the inter-war functionalist style which is rare in Grafton. The relationship of the offices with the Anglican Bishop's palace and school is a memorial of the long prehistory of the site as part of the glebe land for the rector of Grafton.

Biosis ID	Heritage item details	Significance assessment criteria							Level of significance	Statement of significance
		A	B	C	D	E	F	G		
FMW 11	McWilliams Lodge: 33 Victoria Street, Grafton (CVLEP I815).	X		X					Local	McWilliams Lodge is part of the Anglican church precinct which includes the state heritage listed Cathedral on the opposite side of Victoria Street, the hall, Victorian and Georgian cottages, Bishopsholme and Deanery. The building is historically significant demonstrating on going development of the Grafton headquarters of the Anglican Church. It was built as the residence of the Registrar.
FMW 12	'Bishopsholme': 35 Victoria Street, Grafton (CVLEP I815 NT R2625)				X				Local	Bishopsholme is part of the Anglican church precinct which includes the state heritage listed Cathedral on the opposite side of Victoria Street, the hall, Victorian and Georgian cottages and Deanery. The building is historically significant demonstrating the importance of Grafton as the headquarters of the Anglican Church on the far north coast of NSW and the need to provide a substantial residence for the Bishop.
FMW 13	The Deanery: Duke Street, Grafton (CVLEP I97; REP; NT)	X		X	X				Local	A well designed early brick building c1872 having important historic links with early parish development of the Anglican church in Grafton. The building, and its setting, contributes greatly to the visual impact of this ecclesiastical precinct, which includes the Horbury Hunt designed Cathedral. Within the rear garden are mature trees and an old town gas light these should be retained.
FMW 14	Memorial Park, Prince Street, Grafton (CVLEP I727)	X		X					Local	Memorial Park is historically significant being established as Boulevard Park in 1876. Following World War 1 it was renamed as a Memorial Park and since that time its status as a park honouring local service men has been enhanced by the erection of numerous memorial. Their contribution to all wars including Korean War is acknowledged. As the location of Anzac Day service it will have socially significance to the people of Grafton. In addition it contains the Fountain from Fisher Park and a monument to the Scouts who died on the Clarence river.

Biosis ID	Heritage item details	Significance assessment criteria							Level of significance	Statement of significance
		A	B	C	D	E	F	G		
FMW 15	Grafton Courthouse, 53 Victoria Street, Grafton (CVLEP I124; NT R2674)	X	X	X		X			Local	A late Victorian courthouse of great distinction which forms an architectural precinct of great character with the former police station (original courthouse), Post Office and other buildings in Victoria Street. Designed by James Barnet, and built in 1877- 80, it demonstrates his concern for climate control with provision for cross ventilation, double ceilings, and wide eaves and verandahs. The interior contains extensive carved woodwork and panelling, considered by some to be the finest of its type in NSW. The building is likely to be of State significance.
FMW 16	Police Inspector's Residence (Former): 1 Duke Street, Grafton (CVLEP 1194; NT R2672)	X		X				X	Local	<p>The former police inspector's residence at Grafton is a place of significance to both Grafton and the state of New South Wales. It is well constructed in local materials in the traditional manner of masonry walls and a steeply pitched roof incorporating a concealed valley. Its siting was one of strategic importance at the end of Duke Street on the rivers edge near to the principal riverboat wharves. It formed part of the government precinct in the town, being a place whose function was strongly related to the policing of the area and the administration of justice.</p> <p>The building forms part of a group of civic buildings of high significance to the state. It illustrates the principal characteristics of the substantial investment by the NSW Government at the end of the Nineteenth Century in places whose prospects were high. Grafton was then an important place of commerce with important communication and export facilities provided by the river boats and sea going vessels that could service the town at the deep water port of Grafton.</p>

Biosis ID	Heritage item details	Significance assessment criteria							Level of significance	Statement of significance	
		A	B	C	D	E	F	G			
FMW 18	Itala: 1 Queen Street, Grafton (CVLEP I754).	X		X					X	Local	While modified this substantial Federation residence it's historically significant showing continuing development c 1905 along the riverbank. It is associated with the local architect Schaeffer and contributes to the historic fabric of the Grafton Urban Conservation area.
FMW 20	"Fowey": 1 Mary Street, Grafton (CVLEP I633)	X		X		X				Local	An attractive mid-Victorian timber clad house with many architectural details characteristic of craftsmanship in Grafton during the 1870s -1890s. A bay window facing the river with margined pattern panes is aesthetically pleasing. It is historically significant showing development in Grafton prior to the turn of the century. It is worthy of further historical research. Located on the riverbank and facing the river it makes a significant contribution to the Grafton Urban Conservation Area. It has been noted in various heritage studies.
FMW 21	133 Victoria Street, Grafton (CVLEP I830, NT)	X		X		X				Local	An attractive mid-Victorian timber clad house with many architectural details characteristic of craftsmanship in Grafton during the 1870s -1890s. A bay window facing the river with margined pattern panes is aesthetically pleasing. It is historically significant showing development in Grafton prior to the turn of the century. It is worthy of further historical research. Located on the riverbank and facing the river it makes a significant contribution to the Grafton Urban Conservation Area. It has been noted in various heritage studies.
FMW 22	137 Victoria Street, Grafton (CVLEP I130, NT)	X	X	X		X	X			Local	While additions and infill conceal the early elements of this sandstock cottage its colonial Georgian style with two matching chimneys is an evocative example of Grafton's early buildings. Buildings of this age are now rare in Grafton. Its location on the river bank adds to the significance of the site. It may also be associated with A. L. McDougall Police Magistrate, in 1876, and founder of the Grafton Club and his daughter Agnes Jane.

Biosis ID	Heritage item details	Significance assessment criteria							Level of significance	Statement of significance	
		A	B	C	D	E	F	G			
FMW 23	146 Victoria Street, Grafton (CVLEP 1833)	X		X					X	Local	This weatherboard cottage is historically significant as an example of domestic architecture in Grafton at the turn of the century. While some external details are not original it is representative of its type and makes a significant contribution to the historic fabric of Victoria Street.
FMW 24	"Arcola": 150 Victoria Street, Grafton (CVLEP 1131; SHR 1546; NT, NCREP).	X	X	X	X	X				State	Arcola is one of the most architecturally significant buildings in Grafton. It is in substantially original condition, and is set in a large garden facing the river. The survival of many original interior and exterior fittings and decorative features make it a complete and perfect record of domestic dwellings of the early 20th century and it has been recognised as significant to the State. It is associated with the Smith family, who were local graziers.
FMW 25	"Verona": 213 Fitzroy Street, Grafton (CVLEP 1106)	X	X	X		X				Local	This brick residence is historically significant showing the riverbank location of colonial settlement in Grafton, c1870. It is also significant for its association with the well known solicitor Meillion and provides an example of architectural style at the time. The site is likely to have archaeological potential.
FMW 26	222 Fitzroy Street, Grafton (CVLEP 1600)	X		X				X	X	Local	This possibly two roomed workers cottage, now surrounded by mature trees and shrubs, is typical of housing during the 1880s. Cottages such as these make a significant contribution to the social history of Grafton and are becoming increasingly rare. It makes a significant contributes to the historic fabric of the Grafton Urban Conservation area.

Biosis ID	Heritage item details	Significance assessment criteria							Level of significance	Statement of significance
		A	B	C	D	E	F	G		
Flood mitigation works – South Grafton										
FMW 28	<i>SS Induna</i>	X	X						Local	The hull of the <i>SS Induna</i> and the Bow Memorial are visible remains of the significant early shipping history of the Clarence. They provide evidence of shipping's importance to the development of the North Coast and are linked to the development of the rail transport on the north coast. The remains have a commemorative value given that <i>SS Induna</i> is associated with the escape of Winston Churchill from the Boers in 1899. With the remains of rail ferry wharf on the northern bank of the Clarence River they are of State significance.
FMW 31	22 Wharf Street, South Grafton (CV LEP I936)	X	X	X		X	X	X	Local	This attractive Victorian residence has a tessellated tile front path. Paths of this type are rare in Grafton and on the north coast of NSW. Located on the bank of the Clarence river it has expansive views to Susan Island and the northern shore. Architecturally it is significant as a good example of a quality weatherboard clad home with many original external features still intact. Historically it tells of development at South Grafton in the 1890 and shows the importance of Wharf Street, once the main street of South Grafton. The site is likely to have archaeological potential being the suggested location of the Green Tree hotel 1853 -1860.
FMW 32	75 Through Street, South Grafton (CV LEP I931)			X					Local	A small originally four roomed weatherboard cottage now clad with narrow boards. No original joinery is evident but its form and scale have remained intact. It contributes to Through Street and provides a contrast to the more substantial Page residence, Nana Glen and Clarence House.
FMW 33	Lane Park, Through Street, South Grafton (CV LEP I921)				X				Local	Lane Park is significant for its war memorial which has historical associations with the Grafton community, specifically military veterans and their families.

Biosis ID	Heritage item details	Significance assessment criteria							Level of significance	Statement of significance
		A	B	C	D	E	F	G		
FMW 34	Water Trough, Lane Park, Through Street, South Grafton (CV LEP I921)				X				Local	The Bills horse trough in Lane Park is significant as one of only 700 troughs manufactured and distributed by the George Bills trust in Australia.
FMW 36	Walker's Marina Hotel: 90 Through Street, South Grafton (CV LEP I370; NCREP)	X		X		X		X	Local	This hotel is historically significant demonstrating the prominence of South Grafton in the early 20th century. Its location opposite the punt indicates the past significance of river traffic to the town. Architecturally it is significant with excellent and intact decorative features, as well as a unique roof garden terrace once used for watching activity on the river opposite. In its day it was one of the most prestigious hotels on the north coast. It is located on an important corner site and has landmark qualities. It is a key element in the historic streetscapes of both Through and Skinner Streets. The site is likely to have archaeological potential. Listed on the North Coast NCREP it may have State heritage significance.
FMW 37	112 Through Street, South Grafton (CV LEP I933)	X	X	X				X	Local	This Californian bungalow styled residence is historically significant demonstrating a building boom which took place in Grafton and South Grafton during the period 1923 - 1925. It is thought to be associated with Mrs Walker owner of Walkers Hotel.
FMW 38	"Dallinga": 279 Ryan Street, South Grafton	X	X			X			Local	This property is historically significant being associated with the naturalist James Fowler Wilcox (c1861), who was one of the main collectors of specimens illustrative of the natural history of the Clarence, Richmond and Tweed Rivers. Wilcox was also associated with the exhibition movement and his displays appeared at the Melbourne and Paris Exhibitions. In addition it is associated with the third Bishop of Grafton and Armidale the Rt. Rev. Green who was its second owner and reputedly built the two room brick cottage. The house has been extended on two occasions and since 1930 has been associated with the Howley family. The site has archaeological potential and the grounds contain historically significant plantings, including several trees attributed to James Wilcox.

7.4 Significance Assessment (New Heritage Items)

The following section contains significance assessments for new heritage items and/or items encountered during the site investigation (Section 4), archaeological (Section 5) and maritime assessment (Section 6) or known heritage items which require further assessment as a result of the above investigations. Assessments of significance for these heritage items are provided in Table 27 according to the criteria presented in Sections 7.1 and 7.2.

Table 27: Assessments of significance for New Heritage Items.

Biosis ID	Heritage item details	Statement
Criterion A: An item is important in the course, or pattern, of NSW's cultural or natural history (or the cultural or natural history of the local area)		
CZB31	7 Greaves Street (New Heritage Item)	This building contributes to the significance of the urban conservation area. On its own, it does not meet the thresholds for local heritage significance.
CZB32	5 Greaves Street (New Heritage Item)	This building contributes to the significance of the urban conservation area. On its own, it does not meet the thresholds for local heritage significance.
CZB33	1 Greaves Street (New Heritage Item)	This building contributes to the significance of the urban conservation area. On its own, it does not meet the thresholds for local heritage significance.
FMW17	Former location of Sharp's Store complex (New Heritage Item) Between Prince, Kemp and Queen Streets, Grafton	This archaeological site is associated with Joseph Sharp opened a store and inn at this location in c.1841. This became a focal point in Grafton due to its location adjacent to the public wharf. The site was an important early hub in the informal settlement that was to become Grafton. This criterion is met at a local level.
FMW19	Former Location of Courthouse and Lockup: 1, 2, 11 and 12 Blackwood Close, Grafton (New Heritage Item)	This archaeological site has the potential to contain structural and depositional remains associated with the first Grafton Courthouse and lock up. This building played an important role in the administration of the formative settlement of Grafton prior to its formalisation and development. This criterion is met at a local level.
FMW27	Hewitt's Store, Grafton (Newly Identified Site)	This archaeological site occupies the property originally occupied by Robert Bentley who held York run and opened a store early in 1841, which he later sold to Hewitt. Hewitt's store, like a number of establishments became a focal point for the informal settlement that became Grafton. The site was an important early hub in the informal settlement that was to become Grafton. This criterion is met at a local level.

Biosis ID	Heritage item details	Statement
FMW28	Former site of CM Wilson Store (New Heritage Item)	This archaeological site was occupied by the Surveyors W.C.B. Wilson and C.M. Wilson obtained land grants and erected buildings on the river bank in South Grafton. The Wilsons were among the first people to settle in Grafton. The site was an important early hub in the informal settlement that was to become Grafton. This criterion is met at a local level.
FMW30	Former site of Public Wharf, South Grafton (New Heritage Item)	This site contains the potential to contain archaeological remains associated with William Phillips shipyard and store. Phillips shipyard is one of the few identifiable locations of occupation dating to the 1830's in Grafton. Any archaeological remains would be significant in relation to the history of shipbuilding on the Clarence and northern NSW as a whole. The site later became the Public Wharf in South Grafton which was an important focal point from the mid 19th to mid 20th century. The site played an important role in maritime transport and trade through providing a connection to Grafton but also broader trade routes in north coast NSW. This criterion is met at a local level.
FMW35	Former South Grafton Public Wharf/Punt: Termination of Through Street and Skinner Street. (New Heritage Item).	The Public Wharf, South Grafton was an important focal point from the mid 19th to mid 20th century. The site played an important role in maritime transport and trade through providing a connection to Grafton but also broader trade routes in north coast NSW. This criterion is met at a local level.
Criterion B: An Item has strong or special association with the life or works of a person, or group of persons, of importance in NSW's cultural or natural history (or the cultural or natural history of the local area)		
CZB31	7 Greaves Street (New Heritage Item)	This heritage item does not have a strong or special association with the life or works of a person or group of persons of importance in NSW or Grafton's cultural or natural history.
CZB32	5 Greaves Street (New Heritage Item)	This heritage item does not have a strong or special association with the life or works of a person or group of persons of importance in NSW or Grafton's cultural or natural history.
CZB33	1 Greaves Street (New Heritage Item)	This heritage item does not have a strong or special association with the life or works of a person or group of persons of importance in NSW or Grafton's cultural or natural history.

Biosis ID	Heritage item details	Statement
FMW17	Former location of Sharp's Store complex (New Heritage Item) Between Prince, Kemp and Queen Streets, Grafton	The archaeological site of Sharp's Store and Inn is associated with Joseph Sharp a prominent entrepreneur in the history of early Grafton. This criterion is met at a local level.
FMW19	Former Location of Courthouse and Lockup: 1, 2, 11 and 12 Blackwood Close, Grafton (New Heritage Item)	This archaeological site has association to peacekeepers and policing in mid 19th century Grafton. This criterion is met at a local level.
FMW27	Hewitt's Store, Grafton (Newly Identified Site)	This archaeological site has association with Robert Bentley, an early settler and Samuel Hewlett, a prominent businessman in the history of early Grafton. This criterion is met at a local level.
FMW28	Former site of CM Wilson Store (New Heritage Item)	This archaeological site is associated with the store owned by Surveyors W.C.B. Wilson and C.M. Wilson, who were responsible for surveying much of the local area. They were also prominent businessmen and settlers in mid 19th century Grafton. This criterion is met at a local level.
FMW30	Former site of Public Wharf, South Grafton (New Heritage Item)	This archaeological site has the potential to contain remains associated with William Phillips, a well known and established shipwright in northern NSW. This criterion is met at a local level.
FMW35	Former South Grafton Public Wharf/Punt: Termination of Through Street and Skinner Street. (New Heritage Item).	This heritage item does not have a strong or special association with the life or works of a person or group of persons of importance in NSW or Grafton's cultural or natural history. This criterion is met at a local level.
CZB31	7 Greaves Street (New Heritage Item)	This heritage item is makes an important contribution to the streetscape of Greaves Street. This criterion is met at a local level.
CZB32	5 Greaves Street (New Heritage Item)	This heritage item is makes an important contribution to the streetscape of Greaves Street. This criterion is met at a local level.
CZB33	1 Greaves Street (New Heritage Item)	This heritage item is makes an important contribution to the streetscape of Greaves Street. This criterion is met at a local level.

Biosis ID	Heritage item details	Statement
FMW17	Former location of Sharp's Store complex (New Heritage Item) Between Prince, Kemp and Queen Streets, Grafton	As an archaeological site, this item is not important for demonstrating aesthetic characteristics and/or a high degree of creative or technical achievement in Grafton or NSW.
FMW19	Former Location of Courthouse and Lockup: 1, 2, 11 and 12 Blackwood Close, Grafton (New Heritage Item)	As an archaeological site, this item is not important for demonstrating aesthetic characteristics and/or a high degree of creative or technical achievement in Grafton or NSW.
FMW27	Hewitt's Store, Grafton (Newly Identified Site)	As an archaeological site, this item is not important for demonstrating aesthetic characteristics and/or a high degree of creative or technical achievement in Grafton or NSW.
FMW28	Former site of CM Wilson Store (New Heritage Item)	As an archaeological site, this item is not important for demonstrating aesthetic characteristics and/or a high degree of creative or technical achievement in Grafton or NSW.
FMW30	Former site of Public Wharf, South Grafton (New Heritage Item)	As an archaeological site, this item is not important for demonstrating aesthetic characteristics and/or a high degree of creative or technical achievement in Grafton or NSW.
FMW35	Former South Grafton Public Wharf/Punt: Termination of Through Street and Skinner Street. (New Heritage Item).	As an archaeological site, this item is not important for demonstrating aesthetic characteristics and/or a high degree of creative or technical achievement in Grafton or NSW.
Criterion D: An item has strong or special association with a particular community or cultural group in NSW (or the local area) for social, cultural or spiritual reasons		
CZB31	7 Greaves Street (New Heritage Item)	This heritage item occupies a prominent position within a well known street in Grafton; it is likely to have a strong or special association with the local community who will value its contribution to the local aesthetic nature of the area. This criterion is met at a local level.
CZB32	5 Greaves Street (New Heritage Item)	This heritage item occupies a prominent position within a well known street in Grafton; it is likely to have a strong or special association with the local community who will value its contribution to the local aesthetic nature of the area. This criterion is met at a local level.

Biosis ID	Heritage item details	Statement
CZB33	1 Greaves Street (New Heritage Item)	This heritage item occupies a prominent position within a well known street in Grafton; it is likely to have a strong or special association with the local community who will value its contribution to the local aesthetic nature of the area. This criterion is met at a local level.
FMW17	Former location of Sharp's Store complex (New Heritage Item) Between Prince, Kemp and Queen Streets, Grafton	This archaeological site has the potential to reveal information relating to the early occupation of Grafton. This kind of site often of significant value to local community groups, specifically historical societies and community history groups. This criterion is met at a local level.
FMW19	Former Location of Courthouse and Lockup: 1, 2, 11 and 12 Blackwood Close, Grafton (New Heritage Item)	This archaeological site has the potential to reveal information relating to the early occupation of Grafton. This kind of site often of significant value to local community groups, specifically historical societies and community history groups. This criterion is met at a local level.
FMW27	Hewitt's Store, Grafton (Newly Identified Site)	This archaeological site has the potential to reveal information relating to the early occupation of Grafton. This kind of site often of significant value to local community groups, specifically historical societies and community history groups. This criterion is met at a local level.
FMW28	Former site of CM Wilson Store (New Heritage Item)	This archaeological site has the potential to reveal information relating to the early occupation of Grafton. This kind of site often of significant value to local community groups, specifically historical societies and community history groups. This criterion is met at a local level.
FMW30	Former site of Public Wharf, South Grafton (New Heritage Item)	This archaeological site has the potential to reveal information relating to the early occupation of Grafton. This kind of site often of significant value to local community groups, specifically historical societies and community history groups. This criterion is met at a local level.
FMW35	Former South Grafton Public Wharf/Punt: Termination of Through Street and Skinner Street. (New Heritage Item).	This archaeological site has the potential to reveal information relating to the early occupation of Grafton. This kind of site often of significant value to local community groups, specifically historical societies and community history groups. This criterion is met at a local level.

Biosis ID	Heritage item details	Statement
Criterion E: An item has potential to yield information that will contribute to an understanding of NSW's cultural or natural history (or the cultural or natural history of the local area)		
CZB31	7 Greaves Street (New Heritage Item)	This heritage item does not have the potential to yield information that will contribute to an understanding of NSW's or Grafton's cultural or natural history.
CZB32	5 Greaves Street (New Heritage Item)	This heritage item does not have the potential to yield information that will contribute to an understanding of NSW's or Grafton's cultural or natural history.
CZB33	1 Greaves Street (New Heritage Item)	This heritage item does not have the potential to yield information that will contribute to an understanding of NSW's or Grafton's cultural or natural history.
FMW17	Former location of Sharp's Store complex (New Heritage Item) Between Prince, Kemp and Queen Streets, Grafton	This archaeological site has the potential to yield information that will contribute to an understanding of commercial and social activity within mid to late 19th century Grafton. This criterion is met at a local level.
FMW19	Former Location of Courthouse and Lockup: 1, 2, 11 and 12 Blackwood Close, Grafton (New Heritage Item)	This archaeological site has the potential to yield information that will contribute to an understanding of legal and administrative activities within mid to late 19th century Grafton. This criterion is met at a local level.
FMW27	Hewitt's Store, Grafton (Newly Identified Site)	This archaeological site has the potential to yield information that will contribute to an understanding of commercial and social activity within mid to late 19th century Grafton. This criterion is met at a local level.
FMW28	Former site of CM Wilson Store (New Heritage Item)	This archaeological site has the potential to yield information that will contribute to an understanding of commercial and social activity within mid to late 19th century Grafton. This criterion is met at a local level.

Biosis ID	Heritage item details	Statement
FMW30	Former site of Public Wharf, South Grafton (New Heritage Item)	This archaeological site has the potential to yield information pertaining to early 19th century ship building on the Clarence and in NSW. Later archaeological remains have the potential to inform studies on maritime trade within Grafton during the mid 19th and early 20th century. This criterion is met at a local level.
FMW35	Former South Grafton Public Wharf/Punt: Termination of Through Street and Skinner Street. (New Heritage Item).	This archaeological site has the potential to yield information pertaining maritime trade within Grafton during the mid 19th and early 20th century. This criterion is met at a local level.
Criterion F: An item possess uncommon, rare or endangered aspects of NSW's cultural or natural history (or the cultural or natural history of the local area)		
CZB31	7 Greaves Street (New Heritage Item)	This heritage item does not possess uncommon, rare or endangered aspects of NSW or Grafton's cultural or natural history.
CZB32	5 Greaves Street (New Heritage Item)	This heritage item does not possess uncommon, rare or endangered aspects of NSW or Grafton's cultural or natural history.
CZB33	1 Greaves Street (New Heritage Item)	This heritage item does not possess uncommon, rare or endangered aspects of NSW or Grafton's cultural or natural history.
FMW17	Former location of Sharp's Store complex (New Heritage Item) Between Prince, Kemp and Queen Streets, Grafton	This heritage item does not possess uncommon, rare or endangered aspects of NSW or Grafton's cultural or natural history.
FMW19	Former Location of Courthouse and Lockup: 1, 2, 11 and 12 Blackwood Close, Grafton (New Heritage Item)	This heritage item does not possess uncommon, rare or endangered aspects of NSW or Grafton's cultural or natural history.
FMW27	Hewitt's Store, Grafton (Newly Identified Site)	This heritage item does not possess uncommon, rare or endangered aspects of NSW or Grafton's cultural or natural history.
FMW28	Former site of CM Wilson Store (New Heritage Item)	This heritage item does not possess uncommon, rare or endangered aspects of NSW or Grafton's

Biosis ID	Heritage item details	Statement
		cultural or natural history.
FMW30	Former site of Public Wharf, South Grafton (New Heritage Item)	This heritage item does not possess uncommon, rare or endangered aspects of NSW or Grafton's cultural or natural history.
Criterion G: An item is important in demonstrating the principal characteristics of a class of NSW's Cultural or natural places; or Cultural or natural environments (or a class of the local area's Cultural or natural places; or Cultural or natural environments)		
CZB31	7 Greaves Street (New Heritage Item)	This heritage item is not important in demonstrating the principle characteristics of a class of NSW or Grafton's Cultural or natural places or cultural or natural environments.
CZB32	5 Greaves Street (New Heritage Item)	This heritage item is not important in demonstrating the principle characteristics of a class of NSW or Grafton's Cultural or natural places or cultural or natural environments.
CZB33	1 Greaves Street (New Heritage Item)	This heritage item is not important in demonstrating the principle characteristics of a class of NSW or Grafton's Cultural or natural places or cultural or natural environments.
FMW17	Former location of Sharp's Store complex (New Heritage Item) Between Prince, Kemp and Queen Streets, Grafton	This heritage item is not important in demonstrating the principle characteristics of a class of NSW or Grafton's Cultural or natural places or cultural or natural environments.
FMW19	Former Location of Courthouse and Lockup: 1, 2, 11 and 12 Blackwood Close, Grafton (New Heritage Item)	This heritage item is not important in demonstrating the principle characteristics of a class of NSW or Grafton's Cultural or natural places or cultural or natural environments.
FMW27	Hewitt's Store, Grafton (Newly Identified Site)	This heritage item is not important in demonstrating the principle characteristics of a class of NSW or Grafton's Cultural or natural places or cultural or natural environments.
FMW28	Former site of CM Wilson Store (New Heritage Item)	This heritage item is not important in demonstrating the principle characteristics of a class of NSW or Grafton's Cultural or natural places or cultural or natural environments.

Biosis ID	Heritage item details	Statement
FMW30	Former site of Public Wharf, South Grafton (New Heritage Item)	This heritage item is not important in demonstrating the principle characteristics of a class of NSW or Grafton's Cultural or natural places or cultural or natural environments.
FMW35	Former South Grafton Public Wharf/Punt: Termination of Through Street and Skinner Street. (New Heritage Item).	This heritage item is not important in demonstrating the principle characteristics of a class of NSW or Grafton's Cultural or natural places or cultural or natural environments.
Statement of significance		
CZB31	7 Greaves Street (New Heritage Item)	This item contributes to the aesthetic significance of Greaves Street. The heritage item is significant at a local level.
CZB32	5 Greaves Street (New Heritage Item)	This item contributes to the aesthetic significance of Greaves Street. The heritage item is significant at a local level (Criterion A).
CZB33	1 Greaves Street (New Heritage Item)	This item contributes to the aesthetic significance of Greaves Street. The heritage item is significant at a local level (Criterion A).
FMW17	Former location of Sharp's Store complex (New Heritage Item) Between Prince, Kemp and Queen Streets, Grafton	This site has historical significance as an early focal point in the informal settlement that was to become Grafton. It has associations with prominent local entrepreneur Joseph Sharp. It has the potential to yield information relating to early commerce and social activities in mid 19th century Grafton. The heritage item is significant at a local level (Criterion A,B,E).
FMW19	Former Location of Courthouse and Lockup: 1, 2, 11 and 12 Blackwood Close, Grafton (New Heritage Item)	This site has historical significance as an early focal point in the informal settlement that was to become Grafton. It has the potential to yield information relating to early peacekeeping and administration in mid 19th century Grafton. The heritage item is significant at a local level (Criterion A, E).
FMW27	Hewitt's Store, Grafton (Newly Identified Site)	This site has historical significance as an early focal point in the informal settlement that was to become Grafton. It has associations with prominent local businessmen Samuel Hewlitt. It has the potential to yield information relating to early commerce and social activities in mid 19th century Grafton. The

Biosis ID	Heritage item details	Statement
		heritage item is significant at a local level (Criterion A,B,E).
FMW28	Former site of CM Wilson Store (New Heritage Item)	This site has historical significance as the location of Wilson's store, an early focal point in the informal settlement that was to become Grafton. It has associations with surveyors W.C.B. Wilson and C.M. Wilson. It has the potential to yield information relating to early commerce and social activities in mid 19th century Grafton. The heritage item is significant at a local level (Criteria A,B,E).
FMW30	Former site of Public Wharf, South Grafton (New Heritage Item)	This site has historical significance as the location of Phillip's shipyard and store, an early focal point in the informal settlement that was to become Grafton. It has associations with shipwright William Phillips. It has the potential to yield information relating to early shipbuilding activities on the Clarence and northern NSW. The site later became the public wharf and was a focal point for maritime transport from the mid 19th century to mid 20th century. The heritage item is significant at a local level (Criteria A,B,E).
FMW35	Former South Grafton Public Wharf/Punt: Termination of Through Street and Skinner Street. (New Heritage Item).	The site has historical significance as the location of one of the public wharfs in South Grafton. The site was a focal point for maritime transport from the mid 19th century to mid 20th century and has the potential to yield information on maritime trade and transport in Grafton during this time. The heritage item is significant at a local level (Criteria A,E).

8 Statement of heritage impact

8.1 Introduction

This Statement of Heritage Impact (SoHI) has been prepared to address the proposed impacts to heritage items located within or adjacent to the Project Area. Statutory and non-statutory listings for the project area indicate the following listings within the Project Area. These listings are summarised in Table 23. The consolidated total is the actual number of heritage items, as a large number of listings are replicated across several listings instruments.

Table 28: Summary of heritage listings, new heritage items and consolidated totals.

Listing type	Count of heritage item listings		Total 148
	Construction works zone boundary	Flood mitigation works	
Australian National Shipwrecks Database	0	1	1
State Heritage Register	2	1	3
Section 170 Register	3	1	4
Clarence Valley Local Environment Plan	37	34	68
North Coast Regional Environmental Plan	3	6	9
National Trust	5	9	14
Register of the National Estate	1	3	4
New Heritage Items	3	6	9
Total	54	61	115
Consolidated Listings	37	39	76

The Project Area is associated with 76 heritage items including one shipwreck, and two conservation areas. Three of these are of state significance and 73 are of local significance. The field survey also identified the setting and views and vistas as significant at a local level, these are discussed in relation to specific heritage items and conservation areas.

The SoHI identifies the level of impact of the project and the steps taken to avoid or reduce those impacts. This section of the report has been prepared in accordance with the Heritage Manual *Statements of Heritage Impact* published by the Heritage Office and the Department of Urban Affairs & Planning 1996, revised 2002.

8.2 Project details

Please see Section 1.3 for a detailed project description.

8.3 Assessment of impacts

Impacts from the project can be classified under three main categories: direct impacts, indirect impacts and no impact. These kinds of impacts are dependent on nature of the heritage item and its associated curtilage.

Direct impacts

Direct impacts are where the completion of the project will result in a physical loss or alteration to a heritage item which will impact the heritage value or significance of the place. Direct impacts can be divided into whole or partial impacts. Whole impacts essentially will result in the removal of a heritage item as a result of the project where as partial impacts normally constitute impacts to a curtilage or partial removal of heritage values. For the purposes of this assessment direct impacts to heritage items have been placed into the following categories:

- **Physical impact - whole:** where the project will have a whole impact on a heritage item resulting in the complete physical loss of the item. This normally occurs where a heritage item falls entirely within the Construction works zone boundary or Construction Compounds and need to be demolished.
- **Physical impact - partial:** where the project will have a partial impact on an item which could result in the loss or reduction in heritage significance. The degree of impact through partial impacts is dependent on the nature and setting of a heritage item. This typically these impacts are minor impacts to a small proportion of a curtilage of an item or works occurring within the curtilage of a heritage item which may impact on its setting (i.e. gardens and plantings). Indirect impacts

Indirect impacts to a heritage item relate to alterations to the environment or setting of a heritage item which will result in a loss of heritage value. This may include visual or noise impacts caused during construction and after the implementation of a project. Indirect impacts diminish the significance of an item through altering its relationship to its surroundings; this in turn impacts its ability to be appreciated for its historical, functional or aesthetic values. For the purposes of this assessment impacts to heritage items have been placed into the following categories:

- **Visual impact:** where the project does not directly impact on the heritage item but will result in an impact to its contextual or landscape setting. This normally occurs where the development is occurring adjacent or close to the heritage item or is interrupting significant views to and from the item. Visual impacts to heritage items have been informed by the EIS' visual impact assessment prepared by Spackman Mossop Michaels. Refer to the EIS *Appendix J Technical Paper: Urban design, Landscape character and Visual impact assessment*.
- **Noise impact:** in the case of a heritage item that is also a noise sensitive receiver (for example a house dwelling), where the project does not directly impact on the heritage item but will result in noise exceedances that could potentially require architectural noise treatment at the property. Heritage items that are noise sensitive receivers and could require architectural noise treatment have been identified as part of the EIS' noise and vibration assessment (Arup, 2014). Please refer to the EIS *Appendix F Technical Paper: Noise and vibration assessment*.
- **Vibration impact:** The noise and vibration assessment undertaken for the EIS (Arup, 2014) found the construction and operational vibration generated by the project is predicted to be well below the threshold that would be considered necessary to result in even cosmetic damage to building structures. Hence indirect vibration impacts on heritage items is unlikely.

No impact

Where the project does not constitute a measurable direct or indirect impact to the heritage item.

8.4 Statement of heritage impact

A statement of heritage impact for each heritage item identified within this report is provided in Table 27, the impact to each item is identified in Figure 30 to Figure 35.

Construction works zone boundary – Grafton, Clarence River and South Grafton

Table 29: Statements of heritage impact for identified heritage items and heritage conservation areas located within the construction works zone boundary

Biosis ID	Details	Impact	Discussion	Mitigation measures	Management recommendations
Construction works zone boundary - Grafton					
C3	Grafton Conservation Area (C3) (CVLEP 2011, NT, NCREP, RNE)	Direct impact - partial	<p>The Construction works zone boundary will have a significant and irreversible impact on a large portion of the Grafton Conservation Area. Specifically, the project will result in the removal of six heritage items, eleven contributory items (i.e. buildings not listed as heritage items but within the Conservation Area), removal of fig and jacaranda trees (CZB13) associated with Pound Street between Villiers and Kent Street. This will result in a significant impact to the visual aspects and relationship between Ravensford (CZB10) and Dunvegan (CZB12). The Construction works zone boundary will alter the street alignments within the Grafton Conservation Area from the grid established by Surveyor Darke in the mid 19th century. Whilst the project will result in significant impacts to the aesthetic values of some parts of Grafton, it does have the potential, through the implementation of an interpretation plan to emphasise and enhance other heritage values such as the Grafton Road and Rail Bridge (CZB36).</p> <p>The section of the levee to be raised Flood mitigation works traverse 27 heritage items within the Grafton Conservation Area. Impacts to these items are likely to be partial, minor impacts associated with raising ground surface levels and installation of additional flood walls. There is the potential for excavation works to impact upon archaeological resources within this area,</p>	<p>Heritage Interpretation Plan should be prepared and implemented as part of the landscape design for the project. This should include options for mitigating aesthetic impacts from the project through incorporating historical themes into the design. This may include instigating street tree planting programs along the project alignment to replicate the aesthetics of the Grafton Conservation Area as a whole. . The clearance of vegetation and levee raising works within the Grafton conservation area should be completed in a sympathetic manner which does not diminish the aesthetic values of the conservation area.</p>	<p>Recommendation 7: Heritage interpretation.</p>

Biosis ID	Details	Impact	Discussion	Mitigation measures	Management recommendations
			specifically those relating to early settlement in Grafton. The construction of flood walls and clearance of vegetation, specifically gardens and cultural plantings associated with heritage items would have a minor, temporary visual impact upon the setting of heritage items.		
CZB01	129 Villiers Street, Grafton (Villiers Street Residential Group 2; CVLEP I848)	No impact	The Construction works zone boundary is located adjacent to the heritage item. This may result in a minor visual impact through alterations to the street alignment. This is unlikely to affect the significance of the item.	None	None
CZB02	127 Villiers Street, Grafton (Villiers Street Residential Group 2; I847)	No impact	The Construction works zone boundary is located adjacent to the heritage item. This may result in a minor visual impact through alterations to the street alignment. This is unlikely to affect the significance of the item.	None	None
CZB03	125 Villiers Street, Grafton (Villiers Street Residential Group 2; I846)	No impact	The Construction works zone boundary is located adjacent to the heritage item. This may result in a minor visual impact through alterations to the street alignment. This is unlikely to affect the significance of the item.	None	None
CZB04	123 Villiers Street, Grafton (CVLEP: Villiers Street Residential Group 2; I845).	No impact	The Construction works zone boundary is located adjacent to the heritage item. This may result in a minor visual impact through alterations to the street alignment. This is unlikely to affect the significance of the item.	None	None
CZB05	106 Dobie Street, Grafton	No impact	The Construction works zone boundary is located adjacent to the heritage item. This may result in a minor visual impact through	None	None

Biosis ID	Details	Impact	Discussion	Mitigation measures	Management recommendations
	(CVLEP I537)		alterations to the street alignment. This is unlikely to affect the significance of the item.		
CZB06	108 Dobie Street, Grafton (CVLEP I538)	No impact	The Construction works zone boundary is located adjacent to the heritage item. This may result in a minor visual impact through alterations to the street alignment. This is unlikely to affect the significance of the item.	None	None
CZB07	Fisher's Drain: Corner of Villiers and Dobie Streets (CVLEP I535)	No Impact	Fisher's Drain is located within the Construction works zone boundary but outside of the areas of proposed impact. Any archaeological potential associated with Fisher's Drain is unlikely to be impacted by the proposed works. The heritage significance of this item is unlikely to be affected.	A No-Go area should be established around Fisher's Drain (CZB07). This should be fenced for the duration of construction works.	Recommendation 4: No-Go area, temporary fencing.
CZB08	Showground Complex: Corner of Villiers and Dobie Streets, Grafton (CVLEP; I116 & I533)	No impact	The Construction works zone boundary is located adjacent to the heritage item. This may result in a minor visual impact through alterations to the street alignment. This is unlikely to affect the significance of the item.	None	None
CZB09	30-32 Villiers Street, Grafton (Villiers Street Residential Group 1; CVLEP I132; NT R2624)	No impact	The Construction works zone boundary is located adjacent to the heritage item. The property is located sufficiently far outside the Construction works zone boundary as to not be affected. There are no measurable impacts to this heritage item.	None	None

Biosis ID	Details	Impact	Discussion	Mitigation measures	Management recommendations
CZB10	<p>“Ravensford”, 36 Villiers Street, Grafton (Villiers Street Residential Group 1; CVLEP I841; NT R2623).</p>	Direct impact - partial	<p>The Construction works zone boundary encroaches on the curtilage of this item. Whilst this will not directly impact upon the heritage item of Ravensford (CZB10) itself, it will impact upon the heritage value of the property through reducing its setting. The physical impacts to the curtilage are unlikely to encounter significant archaeological remains associated with this heritage item. The Project will impact upon the mature trees located at the junction of Pound and Villiers Street which provide an aesthetic backdrop to the Ravenswood (CZB10) property. Their removal will have a significant impact upon views to and from Ravensford (CZB10) from the west. The property has been identified as being subject to noise exceedances as a result of the project that could potentially require architectural noise treatment at the property. The heritage values of the property will be diminished by the proposed development, however this is unlikely to affect its significance.</p>	<p>Ravensford (CZB10) should be subject to archival recording. This should specifically relate to views to and from the item which will be affected and should incorporate the removal of trees. Noise treatment works must be completed in a way that is sympathetic to the heritage values of the item.</p>	<p>Recommendation 1: Archival recording</p>

Biosis ID	Details	Impact	Discussion	Mitigation measures	Management recommendations
CZB11	Former residence "Dunvegan" 47 Pound Street, Grafton (CVLEP I115; NT R2657)	Direct impact - partial	The project has required the acquisition of a very small portion of land (a minor corner truncation on the property. As a result the Construction works zone boundary infringes the curtilage of this item. Whilst this will not have an impact upon the heritage item of Dunvegan (CZB11) itself, it will impact upon the heritage value of the property through reducing its setting. The physical impacts to the curtilage are unlikely to encounter significant archaeological remains associated with this heritage item. The Project will impact upon the mature trees located at the junction of Pound and Villiers Street which provide an aesthetic backdrop to the Dunvegan (CZB11) property. Their removal will have a significant impact upon views to and from Dunvegan (CZB11) from the north and south. The property has been identified as being subject to noise exceedances as a result of the project that could potentially require architectural noise treatment at the property. The heritage values of the property will be diminished by the proposed development, however this is unlikely to affect its significance.	Dunvegan (CZB11) should be subject to archival recording. This should specifically relate to views to and from the item which will be affected and should incorporate the removal of trees associated with CZB15. If required noise treatment works will need to be completed in a way that is sympathetic to the heritage values of the item.	Recommendation 1: Archival recording
CZB12	Coronation Plaque, Clarence Street, Grafton (CVLEP I516)	No impact	The Construction works zone boundary is located adjacent to the heritage item. The property is located sufficiently far outside the Construction works zone boundary as to not be affected. There are no measurable impacts to this heritage item.	n/a	None

Biosis ID	Details	Impact	Discussion	Mitigation measures	Management recommendations
CZB13	Street trees : Jacaranda, Brachychiton & Ficus sp. over 3 m3 metres (CVLEP I135)	Indirect impact - visual	The Project will impact upon mature street trees located along Pound, Clarence and Villiers Street. A total of 34 <i>Jacaranda mimosifolia</i> and four <i>Ficus sp</i> are located at these locations within the project area. This will affect the aesthetic setting of heritage items within this location. Particularly, the large mature fig trees <i>Ficus sp.</i> located at the junction of Pound and Villiers Street occupy a prominent position within Grafton and provide an aesthetic backdrop to the Ravenswood (CZB10) and Dunvegan (CZB11) heritage items. Their removal will have a significant impact upon views to and from Ravensford (CZB10) and Dunvegan (CZB12) and the appreciation of this portion of the Grafton Conservation Area (C3). Overall, the removal of street trees will have a significant and irreversible impact upon the aesthetic nature of this portion of Grafton. Street trees associated with the properties along Victoria Street may be affected by the proposed Flood mitigation works. Activities within this area should be carefully managed to mitigate, where feasible and reasonable, any potential impacts to these cultural plantings. ¹⁴⁹	Heritage Interpretation Plan should be prepared and implemented. This should include options for mitigating aesthetic impacts from the project through incorporating historical themes into the design. An archival recording should be completed of the street alignments within Pound Street, Villiers Street and Kent Street. This should record the overall streetscape and visual relationships between the street trees and local heritage items.	Recommendation 1: Archival Recording and Recommendation 7: Heritage interpretation.
CZB14	28 Clarence Street (Clarence Street Residential Group 1; CVLEP I522)	No impact	The Construction works zone boundary is located adjacent to the heritage item. The property is located sufficiently far outside the Construction works zone boundary as to not be affected. There are no measurable impacts to this heritage item.	n/a	None
CZB15	26 Clarence Street (Clarence	Indirect impact - noise	The Construction works zone boundary is located adjacent to the heritage item. The property is located sufficiently far outside the	If required noise treatment works would need to be	Recommendation 2: Noise

¹⁴⁹ An inventory of heritage trees is located in Appendix C.

Biosis ID	Details	Impact	Discussion	Mitigation measures	Management recommendations
	Street Residential Group 2; CVLEP I520)		Construction works zone boundary as to not be affected directly or visually by the project. The property has been identified as being subject to noise exceedances as a result of the project that could potentially require architectural noise treatment at the property.	completed in a way that is sympathetic to the heritage values of the item.	
CZB16	12 Clarence Street (Clarence Street Residential Group 1; CVLEP I519)	Indirect impact - visual	The Construction works zone boundary is located adjacent to the heritage item. This will result in a minor visual impact through alterations to the street alignment which may affect views to and from the item in a south-westerly direction. Street trees located at the front of this property will be removed which will affect the visual appreciation of this item.	12 Clarence Street (CZB16) should be subject to archival recording, this should specifically record the visual relationships between the item and the Clarence streetscape.	Recommendation 1: Archival recording
CZB17	10 Clarence Street (Clarence Street Residential Group 1 ; CVLEP I518)	Indirect impact - visual	The Construction works zone boundary is located adjacent to the heritage item. This will result in a minor visual impact through alterations to the street alignment which may affect views to and from the item in a south-westerly direction. Street trees located at the front of this property will be removed which will affect the visual appreciation of this item.	10 Clarence Street (CZB17) should be subject to archival recording, this should specifically record the visual relationships between the item and the Clarence streetscape.	Recommendation 1: Archival recording
CZB18	31 Pound Street, Grafton (CVLEP I1694)	Direct impact - whole	The heritage item is located within one of the Construction Compounds and will need to be demolished. There is a high potential for archaeological remains to be encountered, however the research potential is low given their date. The removal of the property will have an impact upon the aesthetic appreciation of Pound Street and a cumulative impact upon the Grafton Conservation Area (C3).	31 Pound Street (CZB18) should be subject to a comprehensive archival recording prior to its demolition.	Recommendation 1: Archival recording

Biosis ID	Details	Impact	Discussion	Mitigation measures	Management recommendations
CZB19	King George V Plaque: Pound Street, Grafton (CVLEP I688)	Direct impact - partial	The King George V Plaque is located on the a section of Grafton Railway viaduct (CZB20 & 21) which requires replacement as the current height of the viaduct is not sufficient to allow heavy vehicle through traffic along Pound Street. Options for retention were considered during the design phase, including raising the height of the viaduct and lowering the ground level but neither option was viable. The removal of the plaque from Pound Street would have an impact upon the historical appreciation of Pound Street.	The Kind George V Plaque (CZB19) should be subject to an archival recording and salvaged prior to construction and stored in a safe location. The plaque (CZB19) should then be reinstated on the new section of viaduct following the completion of construction activities.	Recommendation 1: Archival recording and Recommendation 3: salvage and relocation
CZB20 & 21	Grafton Railway Viaduct (I687/I514)	Direct impact - partial	The section of Grafton Railway viaduct (CZB20 & 21) which crosses Pound Street requires replacement as the current height of the viaduct is not sufficient to allow heavy vehicles along Pound Street. Options for retention were considered during the design phase, including lowering Pound Street under the viaduct, but this option was not viable. The removal of this portion of the viaduct will have a significant impact on the aesthetic appreciation of Pound Street.	An archival recording of the portion of the Grafton Railway Viaduct (CZB20 & 21) to be removed should be completed. The design of the replacement portion of viaduct over Pound Street should incorporate the art deco style of the current viaduct.	Recommendation 1: Archival recording
CZB22	26 Kent Street, Grafton (Kent Street Residential Group 2 CVLEP I627)	Indirect impact - noise	The Construction works zone boundary is located adjacent to the heritage item. The property is located sufficiently far outside the Construction works zone boundary as to not be affected directly or visually by the project. The property has been identified as being subject to noise exceedances as a result of the project that could potentially require architectural noise treatment at the property.	If required noise treatment works would need to be completed in a way that is sympathetic to the heritage values of the item.	Recommendation 2: Noise
CZB23	24 Kent Street, Grafton (Kent Street)	Indirect impact - noise	The Construction works zone boundary is located adjacent to the heritage item. The property is located sufficiently far outside the Construction works zone boundary as to not be affected directly	If required noise treatment works would need to be completed in a way that is	Recommendation 2: Noise

Biosis ID	Details	Impact	Discussion	Mitigation measures	Management recommendations
	Residential Group 2; CVLEP I626)		or visually by the project. The property has been identified as being subject to noise exceedances as a result of the project that could potentially require architectural noise treatment at the property.	sympathetic to the heritage values of the item.	
CZB24	22 Kent Street, Grafton (Kent Street Residential Group 2; CVLEP I625)	Indirect impact - noise and visual	The Construction works zone boundary is located adjacent to the heritage item. This will result in visual impacts through the removal of heritage items in Pound Street and alterations to the street alignment which will affect views to and from the item. The property has been identified as being subject to noise exceedances as a result of the project that could potentially require architectural noise treatment at the property.	22 Kent Street (CZB24) should be subject to archival recording, this should specifically record the visual relationships between the item and the Pound and Kent Streetscapes. Noise treatment works would need to be completed in a way that is sympathetic to the heritage values of the item.	Recommendation 1: Archival recording and Recommendation 2: Noise
CZB25	18 Kent Street, Grafton (Kent Street Residential Group 1; CVLEP I624)	Direct impact - whole	The heritage item is located within the project footprint hence needs to be demolished. There is a high potential for archaeological remains to be encountered, however the research potential is low given their date. The removal of the property will have an impact upon the aesthetic appreciation of Kent Street and a cumulative impact upon the Grafton Conservation Area (C3).	18 Kent Street (CZB25) should be subject to a comprehensive archival recording prior to its demolition. .	Recommendation 1: Archival recording
CZB26	16 Kent Street, Grafton (Kent Street Residential Group 1; CVLEP I623)	Direct impact - whole	The heritage item is located within the project footprint hence needs to be demolished. There is a high potential for archaeological remains to be encountered, however the research potential is low given their date. The removal of the property will have an impact upon the aesthetic appreciation of Kent Street and a cumulative impact upon the Grafton Conservation Area (C3).	16 Kent Street (CZB26) should be subject to a comprehensive archival recording prior to its demolition. ,	Recommendation 1: Archival recording

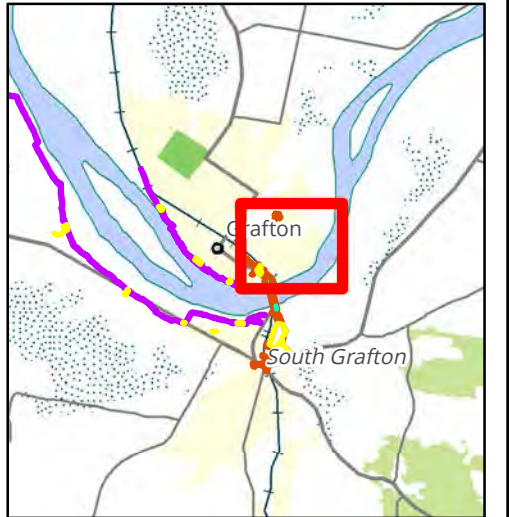
Biosis ID	Details	Impact	Discussion	Mitigation measures	Management recommendations
CZB27	14 Kent Street (Kent Street Residential Group 1; CVLEP I622)	Direct impact - whole	The heritage item is located within the project footprint, hence needs to be demolished. There is a high potential for archaeological remains to be encountered, however the research potential is low given their date. The removal of the property will have an impact upon the aesthetic appreciation of Kent Street and a cumulative impact upon the Grafton Conservation Area (C3).	14 Kent Street (CZB27) should be subject to a comprehensive archival recording prior to its demolition.	Recommendation 1: Archival recording
CZB28	12 Kent Street, Grafton (Kent Street Residential Group 1; CVLEP I621)	Direct impact - whole	The heritage item is located within the project footprint, hence needs to be demolished. There is a high potential for archaeological remains to be encountered, however the research potential is low given their date. The removal of the property will have an impact upon the aesthetic appreciation of Kent Street and a cumulative impact upon the Grafton Conservation Area (C3).	12 Kent Street (CZB28) should be subject to a comprehensive archival recording prior to its demolition.	Recommendation 1: Archival recording
CZB29	14 Pound Street, Grafton (CVLEP I693)	Indirect impact - noise and visual	The Construction works zone boundary is located adjacent to the heritage item. This will result in visual impacts through the removal of heritage items in Pound Street and alterations to the street alignment which will affect views to and from the item. The property has been identified as being subject to noise exceedances as a result of the project that could potentially require architectural noise treatment at the property.	14 Pound Street (CZB29) should be subject to archival recording, this should specifically record the visual relationships between the item and the Pound and Kent Streetscapes. Noise treatment works would need to be completed in a way that is sympathetic to the heritage values of the item.	Recommendation 1: Archival recording and Recommendation 2: Noise
CZB30	'Clarendon' 13 Pound Street, Grafton (CVLEP I692)	Direct impact - whole	The heritage item is located within the project footprint, hence needs to be demolished. There is a high potential for archaeological remains to be encountered, however the research potential is low given their date. The removal of the property will	"Clarendon" (CZB30) should be subject to a comprehensive archival recording prior to its demolition.	Recommendation 1: Archival recording

Biosis ID	Details	Impact	Discussion	Mitigation measures	Management recommendations
			have an impact upon the aesthetic appreciation of Pound Street and a cumulative impact upon the Grafton Conservation Area (C3).		
CZB31	7 Greaves Street (New Heritage Item)	Direct impact - whole	The heritage item is located within the project footprint, hence needs to be demolished. There is a high potential for archaeological remains to be encountered, however the research potential is low given their date. The removal of the property will have an impact upon the aesthetic appreciation of Greaves Street and a cumulative impact upon the Grafton Conservation Area (C3).	7 Greaves Street (CZB31) should be subject to a comprehensive archival recording prior to its demolition.	Recommendation 1: Archival recording
CZB32	5 Greaves Street (New Heritage Item)	Direct impact - whole	The heritage item is located within the project footprint, hence needs to be demolished. There is a high potential for archaeological remains to be encountered, however the research potential is low given their date. The removal of the property will have an impact upon the aesthetic appreciation of Greaves Street and a cumulative impact upon the Grafton Conservation Area (C3).	5 Greaves Street (CZB32) should be subject to a comprehensive archival recording prior to its demolition	Recommendation 1: Archival recording
CZB33	1 Greaves Street (New Heritage Item)	Direct impact - whole	The heritage item is located within the project footprint, hence needs to be demolished. There is a high potential for archaeological remains to be encountered, however the research potential is low given their date. The removal of the property will have an impact upon the aesthetic appreciation of Greaves Street and a cumulative impact upon the Grafton Conservation Area (C3).	Greaves Street (CZB33) should be subject to a comprehensive archival recording prior to its demolition.	Recommendation 1: Archival recording

Biosis ID	Details	Impact	Discussion	Mitigation measures	Management recommendations
CZB34	1 Pound Street, Grafton (CVLEP I690)	Indirect Impact - noise and visual	Construction works zone boundary. This will result in visual impacts through the new Clarence River crossing which will interrupt views between the heritage item and the existing road and rail bridge (CZB36). The property has been identified as being subject to noise exceedances as a result of the project that could potentially require architectural noise treatment at the property.	1 Pound Street (CZB34) should be subject to archival recording, this should specifically record the visual relationships between the item and the Pound, Greaves Streetscapes and the Grafton Road and Rail Bridge (CZB36). Noise treatment works would need to be completed in a way that is sympathetic to the heritage values of the item.	Recommendation 1: Archival recording and Recommendation 2: Noise
CZB35	Glyndon Private Hospital (former): 4 Greaves Street, Grafton (CVLEP I616)	Direct impact - whole	The Glyndon Private Hospital is located within the project footprint hence needs to be demolished. There is a high potential for archaeological remains to be encountered, however the research potential is low given their date. The removal of the property will have an impact upon the historical and aesthetic appreciation of Greaves Street and a cumulative impact upon the Grafton Conservation Area (C3).	Glyndon Private Hospital (PB35) should be subject to a comprehensive archival recording prior to its demolition.	Recommendation 1: Archival recording
Construction works zone boundary – Clarence River					
CZB36	Grafton Rail and Road Bridge (SHR1036; NCREP Schedule 2; SRA237; CVLEP I134)	Indirect Impact - visual	The Grafton Rail and Road Bridge (CZB36) will not be altered or impacted by the project. The project would serve to enhance the heritage significance of the existing bridge through reducing its use and wear and tear on the bridge's fabric. The location of the new Clarence River crossing on the eastern side of the bridge would assist in viewing its technical aspects which are not generally appreciated by travelling traffic and are not easily seen from the pedestrian traffic on the public walkway. Views to and	Grafton Rail and Road Bridge (CZB36) should be subject to archival recording; this should specifically record the visual relationships between the item and Clarence Riverbanks to the west. A heritage interpretation plan should be	Recommendation 1: Archival Recording and Recommendation 7: Heritage interpretation.

Biosis ID	Details	Impact	Discussion	Mitigation measures	Management recommendations
			from the heritage item from the riverbanks in the west will be interrupted.	prepared which seeks to enhance understanding and appreciation of the historical and technological aspects of the bridge.	
Construction work zone boundary – South Grafton					
C7	South Grafton Conservation Area (C7) (CVLEP 2011, NT, NCREP, RNE)	Direct impact - partial	The Construction works zone boundary section of the levee to be raised Flood mitigation works traverse the coastal elements of the Conservation Area, traversing 11 heritage items. Impacts to these items are likely to be partial associated with levee raising works. If sections of the levee located in areas of high archaeological potential are required to be completely replaced, there is the potential for excavation works to impact upon archaeological resources within these areas, specifically those relating to early settlement in Grafton. Clearance of vegetation, specifically gardens and cultural plantings associated with heritage items would have a visual impact upon the setting of heritage items; these impacts would however be temporary in nature. The levee rising within the South Grafton conservation area should be completed in a sympathetic manner which does not diminish the aesthetic values of the conservation area.		Recommendation 7: Heritage interpretation.
CZB37	Grafton City Railway Precinct (SHR No.1154; ARTC s.170 Register; CVLEP I372)	Direct impact - partial	The Grafton City Railway Precinct is located outside of the Construction works zone boundary and the built heritage aspects of this heritage item will not be impacted by the project. There will be a direct impact on the rail turntable, which will be removed by the project. There are archaeological remains associated with the locomotive depot, south of the sugar silo which will be	The South Grafton Rail Turntable should be subject to a comprehensive archival recording prior to its demolition.	Recommendation 1: Archival recording

Biosis ID	Details	Impact	Discussion	Mitigation measures	Management recommendations
CZB37	Grafton City Railway Precinct (SHR No.1154; ARTC s.170 Register; CVLEP I372)	Indirect Impact	<p>impacted by the project. These have been assessed as having a moderate archaeological potential but low research potential by the test excavations.</p> <p>Views from the railway station platform towards the east would change as a result of the proposed south grafton approach embankment, shared path, landscape planting and the vehicles travelling on the proposed approach road which are likely to be visible from the platform.</p>	Recording of current viewshed.	Recommendation 1: Archival recording



- Legend**
- Project Area**
- Construction works zone
 - Temporary Jetty (Indicative)
 - Indicative location of ancillary sites
 - Flood mitigation works construction zone
 - Listed heritage items
- Impact**
- Direct impact - whole
 - Direct impact - partial
 - Indirect impact - noise and visual
 - Indirect impact - visual
 - Indirect impact - noise
 - No Impact

Figure 30: Impacts to heritage items - Construction works zone - Grafton

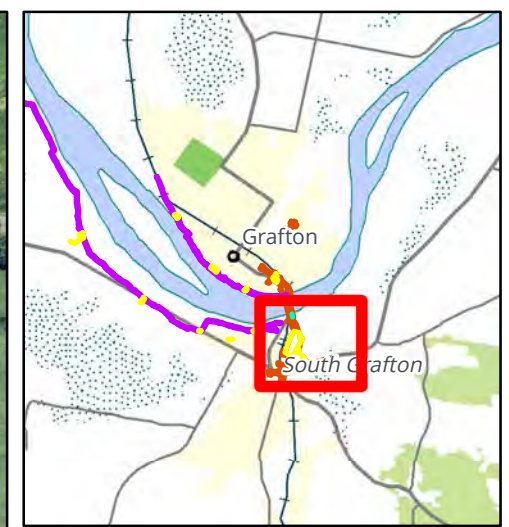
0 50 100 150 200 250
Metres

Scale: 1:5,000 @ A3
Coordinate System: GDA 1994 MGA Zone 56

Biosis Pty Ltd
Ballarat, Brisbane, Canberra, Melbourne, Sydney, Wangaratta & Wollongong

Matter: 16255
Date: 06 May 2014
Checked by: AJB, Drawn by: JMS, Last edited by: jshepherd
Location: P:\16200s\16255\Mapping\16255_F30_Impacts_Detail_20140430

Acknowledgements: Imagery provided by Arup



Legend

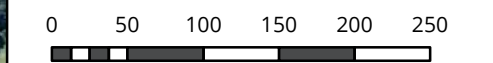
Project Area

- Construction works zone
- Temporary Jetty (Indicative)
- Indicative location of ancillary sites
- Flood mitigation works construction zone
- Listed heritage items

Impact

- Direct impact - whole
- Direct impact - partial
- Indirect impact - noise and visual
- Indirect impact - visual
- Indirect impact - noise
- No Impact

Figure 31: Impacts to heritage items - Construction works zone - South Grafton



Scale: 1:5,000 @ A3
 Coordinate System: GDA 1994 MGA Zone 56



Matter: 16255
 Date: 06 May 2014
 Checked by: AJB, Drawn by: JMS, Last edited by: jshepherd
 Location: P:\16200s\16255\Mapping\16255_F30_Impacts_Detail_20140430

Flood Mitigation Works – Grafton and South Grafton

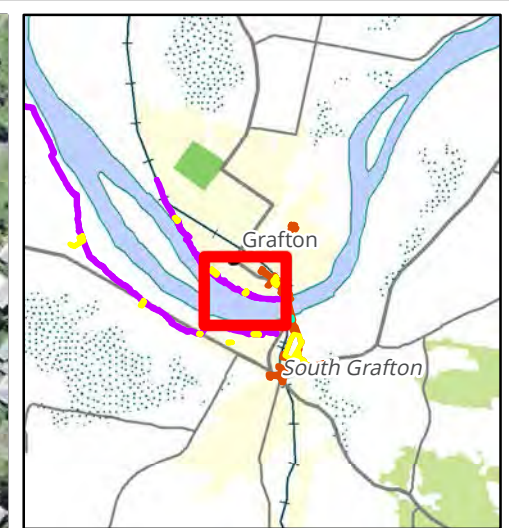
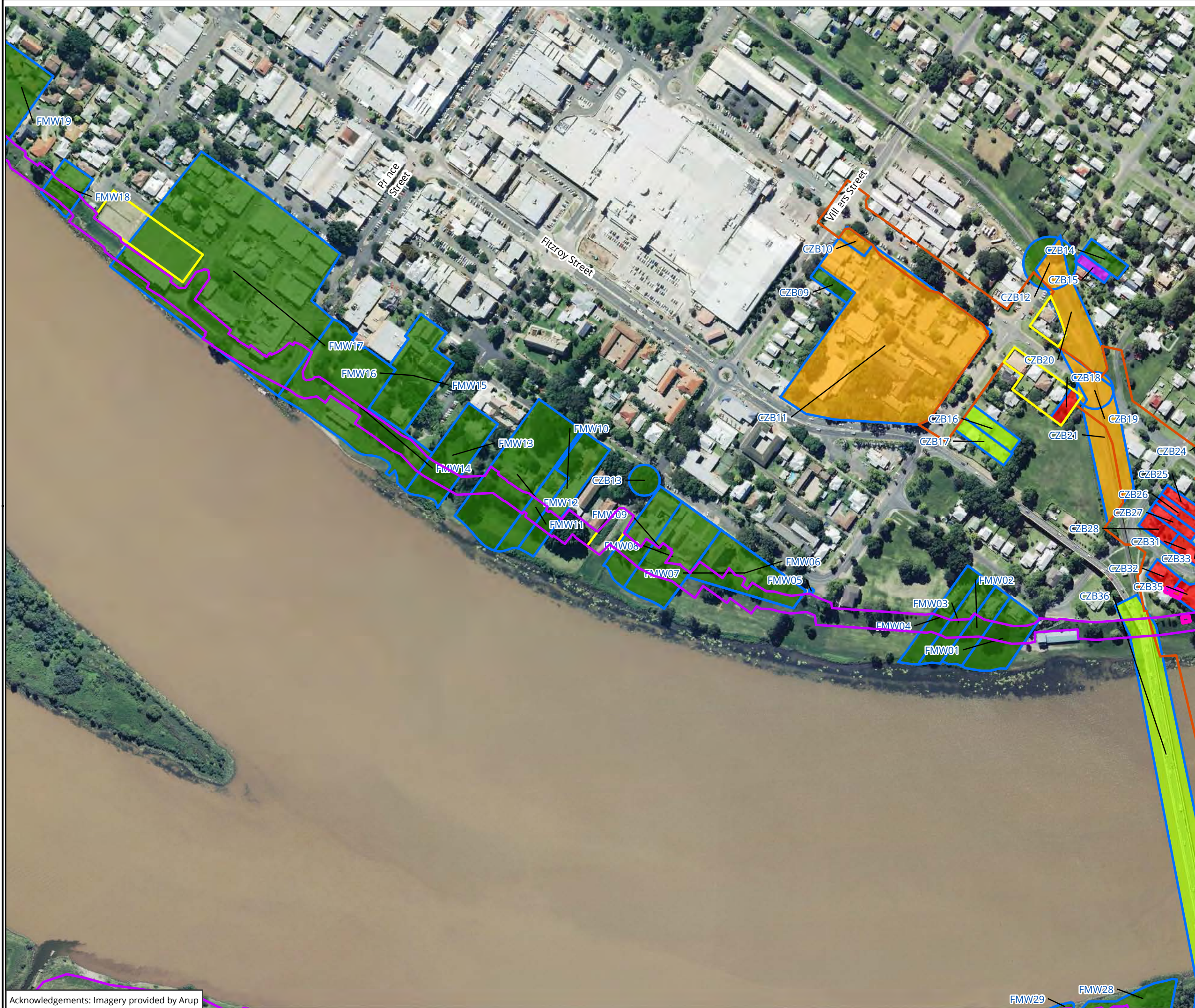
The flood mitigation works traverses the Grafton and South Grafton Conservation Areas (C3 and C7). These conservation areas contain 37 heritage items traversed by, adjacent to or in the close vicinity of the flood mitigation works. The flood mitigation works at present consists of "raising the existing level of the levee to maintain flood immunity". The precise detail on how the flood mitigation works are to proceed is unknown, but impacts to heritage items and areas of archaeological potential are expected to consist of minor alterations and additions to the existing levee walls. Any construction and clearance activities within or adjacent to the curtilage of heritage items should be sympathetic and not result in the removal of or impact to associated heritage values. As a result items traversed by, adjacent to or in the close vicinity of the flood mitigation works are unlikely to experience any detectable direct or indirect impacts by the proposed works.

In the event that extensive ground disturbance works are proposed which requires sections of levee to be removed and replaced within areas of areas of moderate to high archaeological potential and research potential a program of archaeological monitoring will need to be implemented in accordance with Recommendation 6 (see Figure 32, Figure 33, Figure 34 and Figure 35). Should impacts be proposed to the fabric of heritage items then a statement of heritage impact should be prepared and, if necessary, an archival recording.

An assessment of heritage items, their location in relation to the flood mitigation works and potential impacts is presented in Table 30 and displayed in Figure 30 to Figure 35.

Table 30: Statement of Heritage Impact for heritage items identified within flood mitigation works

Heritage Items	Discussion and Recommendations
<p>The level traverses 31 heritage items: FMW01, FMW02, FMW03, FMW04, FMW05, FMW06, FMW07, FMW08, FMW09, FMW10, FMW11, FMW12, FMW13, FMW14, FMW15, FMW16, FMW17, FMW18, FMW19, FMW20, FMW21, FMW22, FMW23, FMW24, FMW27, FMW28, FMW30, FMW33, FMW34, FMW35 and FMW38.</p>	<p>Whilst the flood mitigation works are being undertaken within these heritage items they are unlikely to impact upon the fabric of heritage items. Reducing the Impacts to heritage items should be considered during the detailed design phase in accordance with Recommendation 5. Should the removal or replacement of sections of levees be required, impacts to archaeological values should be considered in accordance with Recommendation 6.</p>
<p>The flood mitigation works are adjacent to four heritage items: FMW26, FMW32, FMW36 and FMW37</p>	<p>No flood mitigation works are taking place within the curtilages of these adjacent heritage items. Any impacts will be visual in nature. These are unlikely to have any significant or long lasting impacts to the heritage item.</p>
<p>The flood mitigation works are in the vicinity of three heritage items: FMW25, FMW29 and FMW31.</p>	<p>There are no discernable impacts to these heritage items as a result of the flood mitigation works. No go areas should be established.</p>



Legend

Project Area

- Construction works zone
- Temporary Jetty (Indicative)
- Indicative location of ancillary sites
- Flood mitigation works construction zone
- Listed heritage items

Impact

- Direct impact - whole
- Direct impact - partial
- Indirect impact - noise and visual
- Indirect impact - visual
- Indirect impact - noise
- No Impact

Figure 32: Impacts to heritage items - Flood mitigation works construction zone - Grafton - East

0 40 80 120 160 200
Metres

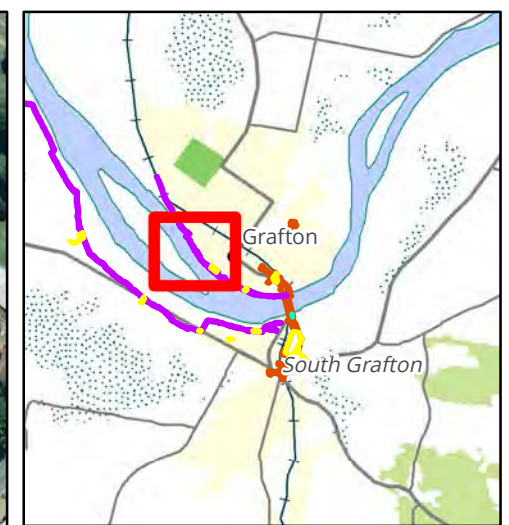
Scale: 1:4,000 @ A3
Coordinate System: GDA 1994 MGA Zone 56

biosis
Biosis Pty Ltd

Ballarat, Brisbane, Canberra, Melbourne,
Sydney, Wangaratta & Wollongong

Acknowledgements: Imagery provided by Arup

Matter: 16255
Date: 06 May 2014
Checked by: AJB, Drawn by: JMS, Last edited by: jshepherd
Location: P:\16200s\16255\Mapping\16255_E30_Impacts_Detail_20140430



Legend

Project Area

- Construction works zone
- Temporary Jetty (Indicative)
- Indicative location of ancillary sites
- Flood mitigation works construction zone
- Listed heritage items

Impact

- Direct impact - whole
- Direct impact - partial
- Indirect impact - noise and visual
- Indirect impact - visual
- Indirect impact - noise
- No Impact

Figure 33: Impacts to heritage items - Flood mitigation works construction zone - Grafton - West

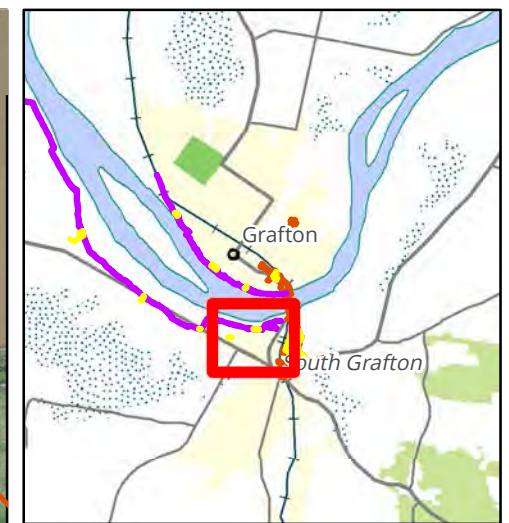
0 40 80 120 160 200
Metres

Scale: 1:4,000 @ A3
Coordinate System: GDA 1994 MGA Zone 56

biosis
Biosis Pty Ltd

Ballarat, Brisbane, Canberra, Melbourne,
Sydney, Wangaratta & Wollongong

Matter: 16255
Date: 06 May 2014
Checked by: AJB, Drawn by: JMS, Last edited by: jshepherd
Location: P:\16200s\16255\Mapping\16255_E30_Impacts_Detail_20140430



Legend

Project Area

- Construction works zone
- Temporary Jetty (Indicative)
- Indicative location of ancillary sites
- Flood mitigation works construction zone
- Listed heritage items

Impact

- Direct impact - whole
- Direct impact - partial
- Indirect impact - noise and visual
- Indirect impact - visual
- Indirect impact - noise
- No Impact

Figure 34: Impacts to heritage items - Flood mitigation works construction zone - South Grafton - East

0 40 80 120 160 200
Metres

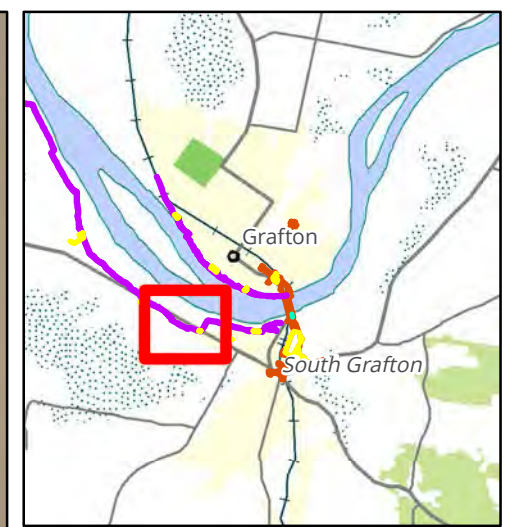
Scale: 1:4,000 @ A3
Coordinate System: GDA 1994 MGA Zone 56

biosis
Biosis Pty Ltd

Ballarat, Brisbane, Canberra, Melbourne,
Sydney, Wangaratta & Wollongong

Acknowledgements: Imagery provided by Arup

Matter: 16255
Date: 06 May 2014
Checked by: AJB, Drawn by: JMS, Last edited by: jshepherd
Location: P:\16200s\16255\Mapping\16255_E30_Impacts_Detail_20140430



Legend

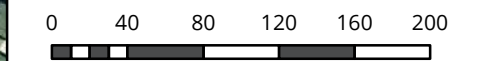
Project Area

- Construction works zone
- Temporary Jetty (Indicative)
- Indicative location of ancillary sites
- Flood mitigation works construction zone
- Listed heritage items

Impact

- Direct impact - whole
- Direct impact - partial
- Indirect impact - noise and visual
- Indirect impact - visual
- Indirect impact - noise
- No Impact

Figure 35: Impacts to heritage items - Flood mitigation works construction zone - South Grafton - West



Scale: 1:4,000 @ A3
 Coordinate System: GDA 1994 MGA Zone 56



Ballarat, Brisbane, Canberra, Melbourne, Sydney, Wangaratta & Wollongong

Matter: 16255
 Date: 06 May 2014
 Checked by: AJB, Drawn by: JMS, Last edited by: jshepherd
 Location: P:\16200s\16255\Mapping\16255_E30_Impacts_Detail_20140430

9 Conclusion and recommendations

9.1 Conclusions

The project area contains or is adjacent to 76 heritage items, including two conservation areas. The most significant impacts will be to the Grafton Conservation Area (C3) which is traversed by the Construction works zone boundary and contains a total of 36 heritage items.

Impacts within the project boundary include:

- Direct total impacts to 10 heritage items where option for retention have been considered but are not feasible, These impacts (historical and aesthetic can be partially mitigated by archival recording, the preparation of an interpretation plan for the whole site and relocation of one heritage item.
- Direct partial impacts to 7 heritage items can be mitigated through archival recording.

The primary mitigation strategy is based on the urban design plan, which will aim to minimize the visual impact of the development and use the existing heritage character to integrate the new urban form into the surviving parts of the conservation area.

The Flood mitigation works impacts the Grafton Conservation Area (C3) and the South Grafton Conservation Area (C7) to a limited degree. At present, impacts to the 39 heritage items traversed, adjacent to or within the flood mitigation works are minimal and negligible and are unlikely to impact upon the heritage value of these items. The precise form of the flood mitigation works is currently unknown and will be determined during the detailed design phase. Impacts to heritage items should be considered throughout the detailed design phase. Should whole sections of levee require replacement, then impacts to areas with moderate to high archaeological potential and research potential should be avoided. Where impacts are unavoidable a program of archaeological monitoring should be undertaken in conjunction with the construction program with the aim of recording any archaeological material should it be encountered. This will need to be coordinated in a manner which does not impact upon the flood defenses of Grafton and South Grafton.

The Grafton Rail and Road Bridge (CZB36) will not be altered or directly impacted by the project. The project would serve to enhance the heritage significance of the existing bridge through reducing its use and wear and tear on the bridge's fabric. The location of the new Clarence River crossing on the eastern side of the bridge would assist in the appreciation of its technical aspects which are not generally appreciated by travelling traffic and are not easily seen from the pedestrian traffic on the public walkway. Views to and from the heritage item from the riverbanks in the west will be interrupted and therefore a program of archival recording to record these is proposed.

A summary of project impacts to heritage items is provided in Table 31.

Table 31: Summary of project impacts to heritage items.

Impact	Heritage items	Total
Direct impact - partial	Construction works zone boundary: C3 (Conservation Area), C7(Conservation Area), CZB10(Dwelling), CZB11(Dwelling), CZB19(Coronation Plaque), CZB20 & 21(Viaduct) and CZB37 (Dwelling).	7
Direct impact - whole	Construction works zone boundary: CZB18, CZB25, CZB26, CZB27, CZB28, CZB30, CZB31, CZB32, CZB33 and CZB35 (all buildings).	10
Indirect impact - noise	Construction works zone boundary: CZB22, CZB23 and CZB15 (Dwellings).	3
Indirect impact -	Construction works zone boundary: CZB24, CZB29 and CZB34. (all Dwellings)	3

Impact	Heritage items	Total
noise and visual		
Indirect impact - visual	Construction works zone boundary: CZB13 (Jacaranda Trees), CZB16 (Dwelling), CZB17 (Dwelling) and CZB36 (Grafton Bridge).	4
No Impact	Construction works zone boundary: CZB01, CZB02, CZB03, CZB04, CZB05, CZB06 (Dwellings), CZB07 (Drain), CZB08 (Showground), CZB09 (Dwelling), CZB12 (Plaque) and CZB14 (Dwellings). Flood Mitigation Works: FMW01 to FMW38.	49
Total	-	76

A summary of mitigation measures to manage impacts to heritage items is included in Table 32 and Figure 36 to Figure 41.

Table 32: Summary of mitigation measures and heritage items.

Management recommendations	Heritage items	Total
Recommendation 1: Archival recording	Construction works zone boundary: CZB10, CZB11, CZB16, CZB17, CZB18, CZB19, CZB20 & 21, CZB25, CZB26, CZB27, CZB28, CZB30, CZB31, CZB32, CZB33 and CZB37.	15
Recommendation 1: Archival recording and Recommendation 9: Interpretation plan.	Construction works zone boundary: CZB13 and CZB36.	2
Recommendation 1: Archival recording and Recommendation 7: Interpretation plan.	Construction works zone boundary: CZB35.	1
Recommendation 1: Archival recording and Recommendation 3: Relocation	Construction works zone boundary: CZB24, CZB29 and CZB34.	3
Recommendation 1: Archival recording and Recommendation 2: Noise	Construction works zone boundary: CZB22, CZB23 and CZB15.	3
Recommendation 2: Noise	Conservation Area: C3 and C7.	2
Recommendation 9: Heritage interpretation	Flood mitigation works: FMW01 to FMW38.	38
Recommendation 5: Heritage values to be considered during the detailed design, avoid impacting areas of archaeological potential and archaeological investigations (where required) and Recommendation 6: Archaeological Monitoring (if required)	Construction works zone boundary and Flood mitigation works Measures: CZB07, FMW29 and FMW34.	3
Recommendation 4: No-Go area, temporary fencing.	Construction works zone boundary: CZB01, CZB02, CZB03, CZB04, CZB05, CZB06, CZB08, CZB09, CZB12 and CZB14.	10

9.1.1 Positive aspects of the project

The project has the potential to enhance the significance of the heritage items and values within Grafton and South Grafton, particularly the Grafton Road and Rail Bridge (CZB36). The project will reduce vehicle traffic across the bridge which will reduce wear and tear on the heritage item. Broader impacts to the Grafton Conservation Area (C3) and heritage items located within it can be mitigated to a certain extent through the implementation of a heritage interpretation plan which will aim to enhance the appreciation of the history of the local area and remaining heritage values, remove intrusive elements and incorporate heritage themes associated with Grafton into the design and landscape components of the project. Impacts to archaeological resources within the project area (specifically by the flood mitigation works) if they proceed, can be mitigated through the collection of detailed archaeological data. Controlled archaeological excavation would facilitate a greater understanding of the local area and the results would be made available for research and public programs.

9.1.2 Negative aspects of the project

The negative aspects of the project include the removal of heritage values from the Grafton Conservation Area (C3), which includes the removal of 11 heritage items and partial impacts to up to 37 heritage items. The widening of Pound Street in particular will impact upon a visually prominent intersection at Pound and Villiers Street through the removal of several large, historically significant fig trees (*ficus sp.*) which have a close, aesthetic relationship to the nearby heritage items of Ravensford (CZB11) and Dunvegan (CZB12). The project has explored options to retain these trees, however this is not feasible. Impacts to Ravenswood (CZB11) and Dunvegan (CZB12) have been reduced significantly since the original design phase from removal to retention with no impacts to the build fabric of the items. The loss of significance to the Grafton Conservation Area (C3) through the alterations to this visually significant interchange can be partially mitigated through the implementation of an interpretation plan for the project which will advise on strategies for enhancing street trees and avenues in other portions of the project alignment.

9.2 Recommendations

These recommendations have been formulated to respond to client requirements and the significance of the site. They are guided by the NSW Heritage Manual (as associated guidelines) and the ICOMOS *Burra Charter* with the aim of doing as much as necessary to care for the place and make it useable whilst reducing actions which will reduce cultural significance.¹⁵⁰

Recommendation 1. Prepare an archival record prior to impact and at the completion of the project

Archival recording is recommended for 29 heritage items including CZB10, CZB11, CZB16, CZB17, CZB18, CBZ19, CZB20 & 21, CBZ24, CZB25, CZB26, CZB27, CZB28, CBZ29, CZB30, CZB31, CZB32, CZB33, CBZ34, CZB35, CZB36 and CZB37. Furthermore, archival recording of the portions of Pound Street within the Grafton Conservation Area (C3) should be completed.

The archival records should record the process of development and alterations to heritage values. A program of archival recording should be completed prior to impacts and at the completion of the project. All archival recording should be completed in accordance with the Heritage Branch guidelines *How to Prepare Archival Records for Heritage Items* and *Photographic Recording of Heritage Items Using Film or Digital Capture* (Heritage Office 2001, revised 2004, 2006).

¹⁵⁰ "The Burra Charter 1999", the Australia ICOMOS Charter of Places of Cultural Significance.

Recommendation 2 Noise mitigation architectural treatment on heritage items

Based on the concept design detailed in the EIS, it is anticipated that the project could result in noise exceedances for CWZ10, CWZ11, CWZ15, CWZ22 and CWZ23, CWZ24, CWZ29 and CWZ34 that could potentially require architectural noise treatment at the property. Should the detailed design identify that houses with heritage significance be required architectural noise treatments on heritage items would need to be undertaken in a sympathetic manner as to minimise impact upon the significance of the heritage item.

Recommendation 3 Relocation of heritage items

Following its archival recording, the King George V Plaque (CZB19) should be relocated to a safe location by the construction contractor and later reinstated on the new section of viaduct at Pound Street following its completion.

Recommendation 4 'No go' areas and temporary fencing during construction

'No go' areas should be established around heritage items; CZB07, FMW29 and FMW34 (see Figure 36 to Figure 40). For CZB07 and FMW34 No-Go areas should be established at an appropriate distance to protect the heritage values of the heritage items but allow construction to proceed unhindered.

In relation to FMW29, both terrestrial and maritime temporary exclusion areas should be established during construction to exclude the entry of vehicles or equipment associated with construction. The perimeter should be placed on the existing property boundary to the south of the SS Induna. A maritime exclusion area (to be in accordance with Maritime and navigational requirements) should be placed 15 metres from the shipwreck to remind workboats to not enter this area. Terrestrial works in the vicinity of the wreck should consider the stability of the wreck and be undertaken in a manner which ensures that heavy machinery does not impact upon the river bank or the wreck.

'No go' areas should be marked on all construction plans and incorporated into inductions/tool box talks with contractors undertaking work within the vicinity.

Recommendation 5 Heritage values to be considered as part of the flood mitigation works

The proposed flood mitigation works consists of raising section of the level of the existing levee system to maintain flood immunity. The design of the flood mitigation would be undertaken at detailed design stage, but impacts to heritage items and areas of archaeological potential are expected to consist of minor alterations and additions to the existing levee. Any construction and clearance activities within or adjacent to the curtilage of heritage items should be sympathetic as to minimise the removal of or impact to associated heritage values.

Recommendation 6 Archaeological monitoring (if required)

The analysis for this report has determined the flood mitigation works traverse areas of moderate and high potential for the survival of archaeological resources of local significance. Depending on the level of impact and the form of the proposed works monitoring of these moderate and high archaeologically sensitive areas will be required. No monitoring is required for sites with low archaeological significance.

Monitoring is proposed as it is not appropriate to undertake archaeological testing and salvage within or adjacent to the existing flood levee. This is due to the risks associated with compromising the flood protection measures around Grafton. An archaeological excavation program would expose properties within Grafton to an unacceptable level of risk and therefore is not appropriate in this instance.

An archaeological monitoring program would be developed as part of the Heritage Management Sub-Plan developed for the project. The monitoring program would provide the following details:

- Description of the proposed works, including level of disturbance and consideration of previous levee construction activities and how this relates to the impacts from the works.

-
- Details of involvement of suitably qualified archaeologist for all initial ground disturbance works which may impact upon archaeological deposits.
 - Process to be followed should any heritage items be identified during monitoring period

Recommendation 7 Prepare an interpretation plan for the project

The project will have a significant impact on individual heritage items and heritage values associated with the Grafton Conservation Area (C3). A heritage interpretation plan should be prepared to provide opportunities to enhance understanding and appreciation of the heritage items, values and themes associated with Grafton. In particular, the interpretation plan should identify heritage items which are to be removed and provide opportunities for compensating for these losses. This may include incorporating elements such as formalised heritage walks and programs of tree planting into the landscaping and planning of the project.

Recommendation 8 Discovery of Unexpected Non-Aboriginal Objects and/or Human Remains

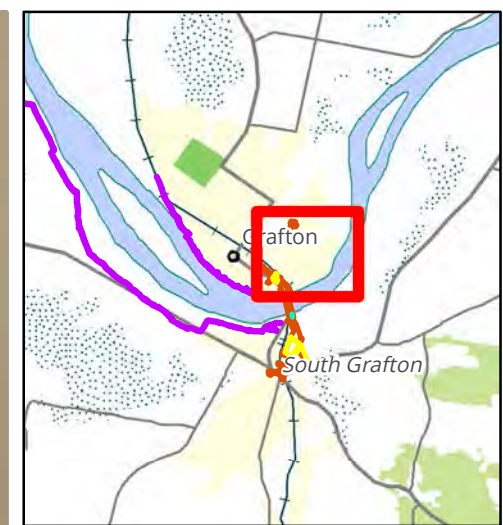
In the event that unanticipated Non-Aboriginal heritage items or skeletal remains are encountered the *Roads and Maritime Services Standard Management Procedure for Unexpected Archaeological Finds* (2012) will be implemented.

Recommendation 9 Consideration of heritage in Urban Design principles

Heritage considerations will be incorporated into the Urban Design and Landscape objectives developed for the project. These features will be refined further during detailed design development for the project.

9.2.1 Effectiveness of recommendations

The management recommendations presented within this document are based upon the findings of a comprehensive investigation of documentary sources, built fabric, terrestrial and maritime archaeological sites. These investigations have informed the assessment of significance and impacts for all identified heritage items within the vicinity of the project area. The management recommendations have been formulated based upon these assessments and the principles outlined in the NSW Heritage Manual (and subsequent guidelines) and the Australia ICOMOS Burra Charter. The recommendations detail measures to preserve and enhance heritage items where possible (Recommendations 3, 4, 5 and 8). Where impacts are unavoidable this document processes for minimising the losses to archaeological knowledge (Recommendations 2, 6, 7 and 9).



- Legend**
- Project Area
- Construction works zone
 - Indicative location of pump station infrastructure
 - Indicative location of ancillary sites
 - Flood mitigation works construction zone
 - Listed heritage items
- Recommendation
- Recommendation 2
 - Recommendation 3
 - Recommendation 4
 - Recommendation 5
 - Recommendation 6
 - Recommendation 7
 - No Recommendations

Figure 36: Management recommendations - Construction works zone - Grafton

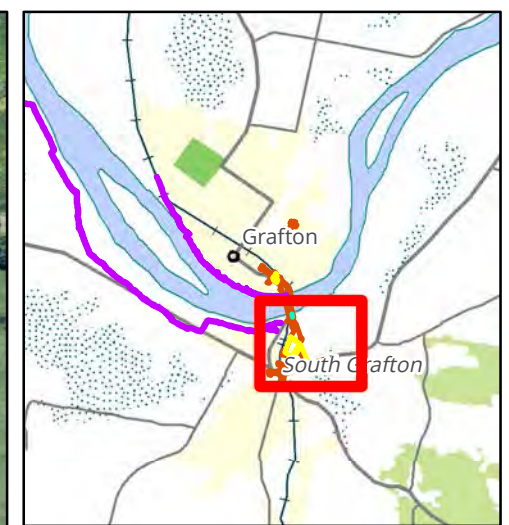
0 50 100 150 200 250
Metres

Scale: 1:5,000 @ A3
Coordinate System: GDA 1994 MGA Zone 56

Biosis Pty Ltd
Ballarat, Brisbane, Canberra, Melbourne, Sydney, Wangaratta & Wollongong

Matter: 16255
Date: 06 May 2014
Checked by: AJB, Drawn by: JMS, Last edited by: jshepherd
Location: P:\16200s\16255\Mapping\16255_E36_Recommendations_20140423

Acknowledgements: Imagery provided by Arup



- Legend**
- Project Area
- Construction works zone
 - Temporary Jetty (Indicative)
 - Indicative location of ancillary sites
 - Flood mitigation works construction zone
 - Listed heritage items
- Recommendation
- Recommendation 2
 - Recommendation 3
 - Recommendation 4
 - Recommendation 5
 - Recommendation 6
 - Recommendation 7
 - No Recommendations

Figure 37: Management recommendations - Construction works zone - South Grafton

0 50 100 150 200 250
Metres

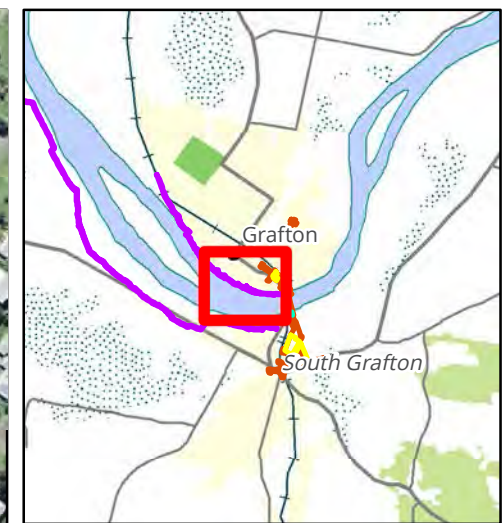
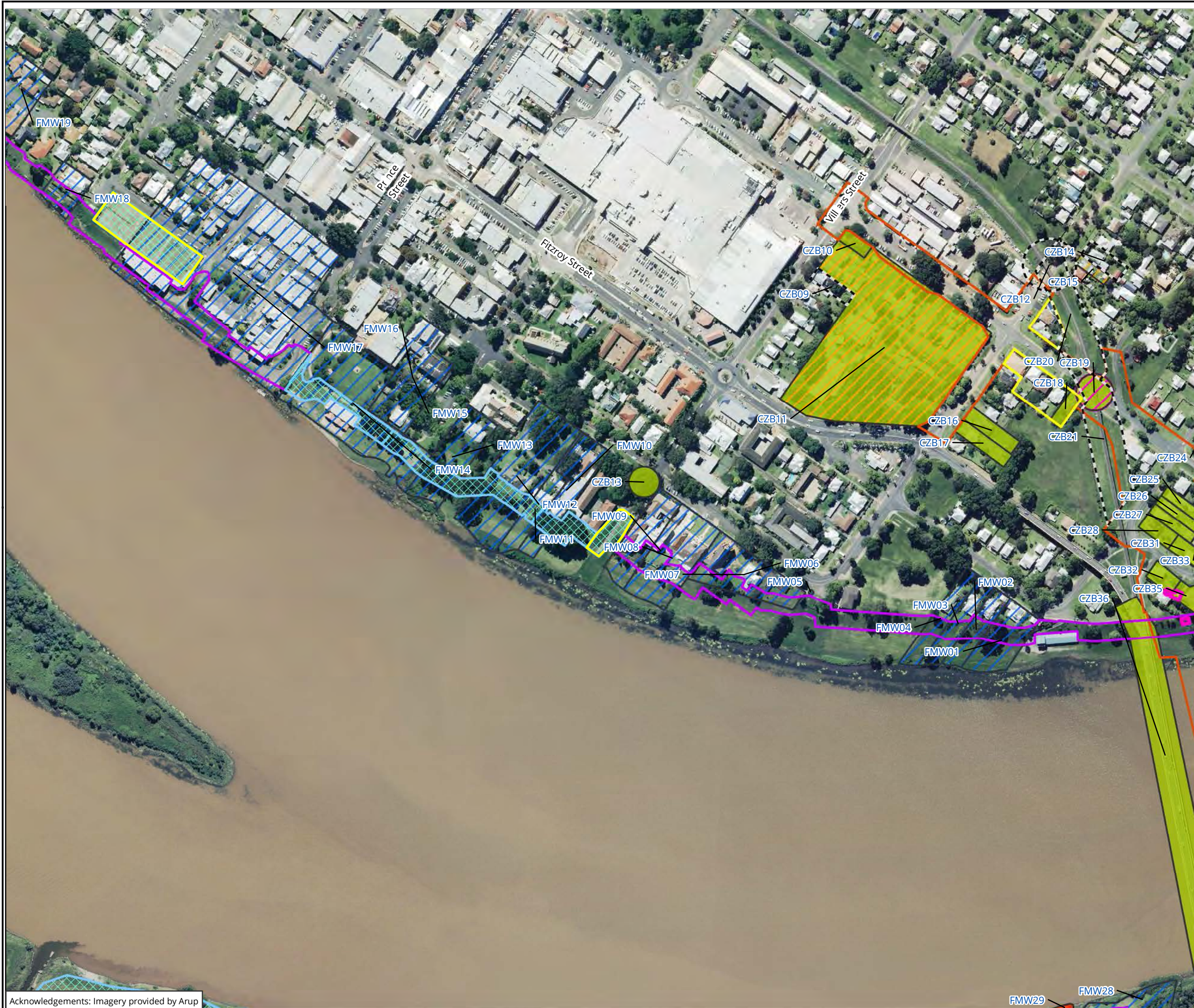
Scale: 1:5,000 @ A3
Coordinate System: GDA 1994 MGA Zone 56

biosis
Biosis Pty Ltd

Ballarat, Brisbane, Canberra, Melbourne, Sydney, Wangaratta & Wollongong

Acknowledgements: Imagery provided by Arup

Matter: 16255
Date: 06 May 2014
Checked by: AJB, Drawn by: JMS, Last edited by: jshepherd
Location: P:\16200s\16255\Mapping\16255_E36_Recommendations_20140423



- Legend**
- Project Area**
- Construction works zone
 - Indicative location of pump station infrastructure
 - Indicative location of ancillary sites
 - Flood mitigation works construction zone
 - Listed heritage items
- Recommendation**
- Recommendation 2
 - Recommendation 3
 - Recommendation 4
 - Recommendation 5
 - Recommendation 6
 - Recommendation 7
 - No Recommendations

Figure 38: Management recommendations - Flood mitigation works construction zone - Grafton - East

0 40 80 120 160 200
Metres

Scale: 1:4,000 @ A3
Coordinate System: GDA 1994 MGA Zone 56

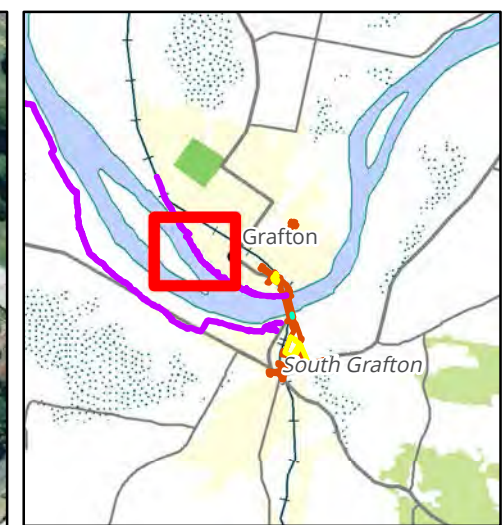
biosis
Biosis Pty Ltd

Ballarat, Brisbane, Canberra, Melbourne,
Sydney, Wangaratta & Wollongong

Matter: 16255
Date: 06 May 2014
Checked by: AJB, Drawn by: JMS, Last edited by: jshepherd
Location: P:\16200s\16255\Mapping\16255_E36_Recommendations_20140423

Acknowledgements: Imagery provided by Arup

FMW29 FMW28



- Legend**
- Flood mitigation works construction zone
 - Listed heritage items
 - Recommendation**
 - Recommendation 2
 - Recommendation 3
 - Recommendation 4
 - Recommendation 5
 - Recommendation 6
 - Recommendation 7

Figure 39: Management recommendations - Flood mitigation works construction zone - Grafton - West

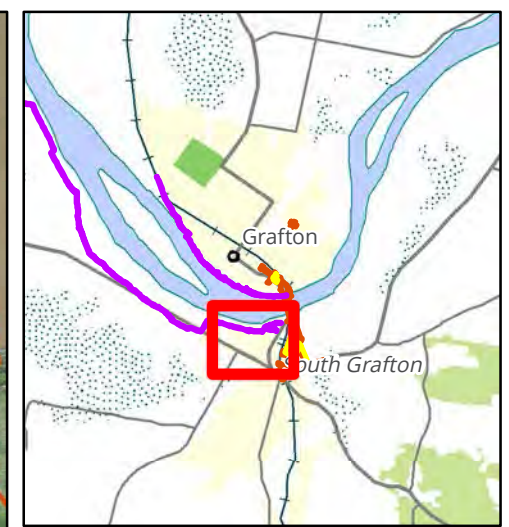


Scale: 1:4,000 @ A3
 Coordinate System: GDA 1994 MGA Zone 56

biosis
 Biosis Pty Ltd
 Ballarat, Brisbane, Canberra, Melbourne,
 Sydney, Wangaratta & Wollongong

Matter: 16255
 Date: 06 May 2014
 Checked by: AJB, Drawn by: JMS, Last edited by: jshepherd
 Location: P:\16200s\16255\Mapping\16255_E36_Recommendations_20140423

Acknowledgements: Imagery provided by Arup



- Legend**
- Project Area
- Construction works zone
 - Indicative location of ancillary sites
 - Flood mitigation works construction zone
 - Listed heritage items
- Recommendation
- Recommendation 2
 - Recommendation 3
 - Recommendation 4
 - Recommendation 5
 - Recommendation 6
 - Recommendation 7
 - No Recommendations

Figure 40: Management recommendations - Flood mitigation works construction zone - South Grafton - East

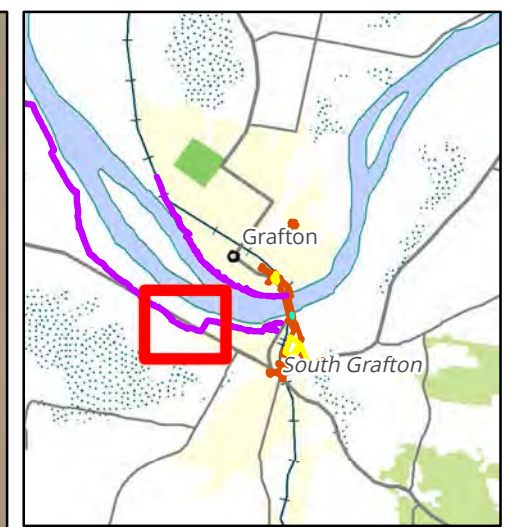
0 40 80 120 160 200
Metres

Scale: 1:4,000 @ A3
Coordinate System: GDA 1994 MGA Zone 56

biosis
Biosis Pty Ltd

Ballarat, Brisbane, Canberra, Melbourne, Sydney, Wangaratta & Wollongong

Matter: 16255
Date: 06 May 2014
Checked by: AJB, Drawn by: JMS, Last edited by: jshepherd
Location: P:\16200s\16255\Mapping\16255_E36_Recommendations_20140423



- Legend**
- Flood mitigation works construction zone
 - Listed heritage items
 - Recommendation**
 - Recommendation 2
 - Recommendation 3
 - Recommendation 4
 - Recommendation 5
 - Recommendation 6
 - Recommendation 7

Figure 41: Management recommendations - Flood mitigation works construction zone - South Grafton - West

0 40 80 120 160 200
Metres
Scale: 1:4,000 @ A3
Coordinate System: GDA 1994 MGA Zone 56

Biosis Pty Ltd
Ballarat, Brisbane, Canberra, Melbourne, Sydney, Wangaratta & Wollongong

Matter: 16255
Date: 06 May 2014,
Checked by: AJB, Drawn by: JMS, Last edited by: jshepherd
Location: P:\16200s\16255\Mapping\16255_E36_Recommendations_20140423

References

- Berger, I. 2005. Proposed remedial works to Piers 18, 19 and 20 of the Clarence River Bridge, Grafton, NSW. SoHI report prepared for RTA Northern Region Client Services.
- Biosis Research, 2003, A Non-Indigenous Heritage Assessment for Route Selection: Proposed Additional Crossing of the Clarence River, Grafton, New South Wales (December).
- Biosis Research, 2004. An Indigenous Heritage Assessment for Route Selection: Proposed Additional Crossing of Clarence River, Grafton, New South Wales (January). A report to ARUP on behalf of the Roads and Traffic Authority.
- Biosis Research, 2011 Main Road 83 Summerland Way - Additional Crossing of the Clarence River at Grafton, Preliminary Route Options Report, Technical Paper: Non-Aboriginal Heritage
- Clarence Valley Council Fact Sheet 11: Heritage Controls February 2010
http://www.clarence.nsw.gov.au/content/uploads/Fact_Sheet_11.pdf Accessed 01.09.2010
- Clarence Valley Council Website: <http://www.clarence.nsw.gov.au/cmst/cvc009/lp.asp?cat=219> Accessed 09/04/2010
- Clarence Valley Council, Clarence Valley Local Environmental Plan 2010 (Draft)
- Day, Bill 2005 "Aboriginal Sites within the Clarence Valley". Clarence River Tourist Association.
- DEC (2005) Washpool Creek, Washpool National Park: Wild River Assessment. Parks and Wildlife Division, Department of Environment and Conservation, Sydney.
- DECCW 2003 Mitchell Landscapes of NSW - Version 2.
- Department of Primary Industries (1970) Grafton- Maclean 1:250,000 Metallogenic Map. Geology Survey of NSW.
- Department of Primary Industries Website
- Dunn, Ian 2002 *Byways of Steam 18: 'the railway from nowhere to nowhere': the Grafton to the Tweed Railway 1894-1932*. Eveleigh Press, New South Wales
- Dutton K. & D.Rowe (eds) 1987 *A Swiss Settler in Australia: The Diary of Etienne Bordier*. Auchmuty Library Publication No 6, University of Newcastle.
- Elders of the Yaegl Tribe (1996) *The Life Stories of the Aboriginal Elders of the Yaegl Tribe as told by Dr. Lyn Gow-Laurie* Indigenous Research Unit, University of New South Wales.
- Fraser, Don, 1995 *Bridges Down Under: The history of railway underbridges in New South Wales*, Australian Railways Historical Society, Sydney.
- Gardiner J, 2010, Clarence Valley Council: Grafton City (Former) Community-Based Heritage Study (revised February). Report prepared for Clarence Valley Council and the Heritage Council of NSW
- Heritage Council (NSW) (2001) *New South Wales Historical Themes: Table showing correlation of national, state and local themes, with annotations and examples*
- Higman, B., 1968. Sugar Plantations and Yeoman Farming in NSW, *Annals of the Association of American Geographers*, 58(4), pp.697–719
- Hosty, K. & Stuart, I.M., 1994. Maritime archaeology over the last twenty years. *Australian Archaeology*, 4(39), pp.4–12.
<http://www.dpi.nsw.gov.au/minerals/geological/overview/regional/sedimentary-basins/clarenceBasin>
- Jeans D.N.1974 *A Historical Geography of NSW to 1901*, Reed Educational

-
- Jeans, D.N., 1974. Shipbuilding in nineteenth century New South Wales. *Journal of the Royal Australian Historical Society*, 60(3), pp.156–163.
- Jahn, G. 1982. Conservation Policies for the City of Grafton. B. Arch. Thesis (Hons) NSW Institute of Technology. Sydney.
- Kass, Terry 2009 *Grafton: jacaranda city on the Clarence : a history*. Clarence Valley Council, Grafton, N.S.W.
- Lee, S. 2003 *Riverboats of the Clarence*, The Port of Yamba Historical Society Inc., Yamba'
- Meston, A. 1882 Report on the Sugar Industry on the Clarence and Richmond Rivers', *Journal of The Legislative Council of Queensland*, 31, 2.
- Milne, R 2005 Grafton Rail Centre of the Clarence for 100 years, *Australian Railway History* November 2005.
- Roberts, J.W. 1932 The Clarence River Bridge, *Transactions of the Institution of Engineers* Vol 13:369-361, 405-414.
- Sabine, N. 1970 An Ethnohistory of the Clarence Valley – Honours Thesis, University of New England.
- Stubbs B, 2007, A Thematic History of the City of Grafton, Clarence Valley Council – NSW Heritage Office.
- Votes and Proceedings of the Legislative Assembly of NSW: Road From Tenterfield to Grafton (Repairs of); 1860, Volume 1, pp.921-41
- Votes and Proceedings of the Legislative Assembly of NSW: 'Timber Reserves' (Report on – in Clarence District), 1872, Volume 2, pp.229-30
- Wrigley, John. 1991. Grafton Heritage Tree Survey. Unpublished report for Grafton City Council.
- Newspapers**
- Clarence & Richmond Examiner 10 October, 1865 p.3
- The Daily Examiner September 2013
- The Sydney Gazette and New South Wales Advertiser, 9 Jul 1842
- "Original Correspondence." The Sydney Gazette and New South Wales Advertiser, 9 Jul 1842: 3
- "LEGISLATIVE COUNCIL." The Australian 16 Dec 1843: 2.
- Maps and Plans**
- Aerial view of the opening of Grafton Clarence River Bridge, Grafton, NSW, 20 July 1932 (Source: National Library of Australia)
- Burrowes ME 1841 Government subdivision, Parish Great Marlow Clarence River District, same County, C.4.1121 SR Map 2256.
- Chief Traffic Manager 1922 Opening of the line from Glenreagh to Grafton – South Grafton, Circular 218, NSW Government Railways
- Chief Traffic Manager 1915 Opening of the line from Glenreagh to Grafton – South Grafton, Circular 245 NSW Government Railways
- Darke, W.W. 1849 Grafton, Town site on the Clarence River, G.1359, SR Map 2847
- Darke W.W. 1850 Plan of the Subdivision of the Town of North Grafton, County of Clarence G 6-1369
- Department of Lands 1889 City of Grafton and the Town of South Grafton, Parish of Great Marlow and Southampton, County of Clarence 1889 (charted to 1901).
- Wilson, George "Chart of the Clarence River" 1840.
- Wilson, W.C.B. 1840 Government subdivision of Parish Southampton, County Hants (now Clarence), Clarence River District C.2.1121 SR Map 2254

Crown Plans: G 24-1359, G 6 1359, G.1359a, C 2980 1577 and C 1823 1577