



September 2017

## Permanent closure of a section of Kent Street

**The NSW Government is funding the new \$240 million Grafton bridge. As part of the work, a section of Kent Street will be permanently closed. This will allow utility services to be relocated and earthworks to start.**

**Access to Kent Street between Pound and Fitzroy streets will be permanently closed from 11 September, 2017.** The closure will apply to all vehicles except residents and their visitors.

The permanent closure is necessary because this section of Kent Street will form part of the new bridge's embankment.

Closing this part of Kent Street now is required so earthworks required to build the embankment can start and utility services can be relocated.

Access for pedestrians and cyclists will be maintained but may change locations. Signage will advise pedestrians and cyclists of any diversions.

### How will the work affect you?

**Access to Kent Street between Fitzroy and Pound streets** will be restricted to residents and visitors. The existing widened pavement adjacent to the Clarence River Sailing Club will enable vehicles to turn around.

### Change to school bus services

Busways school bus services which previously travelled this section of Kent Street will be rerouted. Busways, who have been consulted and are aware of the changes, will notify affected parents.

### Traffic changes

Signage will be in place to advise road users of the changes and restrictions. Please keep to speed limits and follow the direction of the signs.

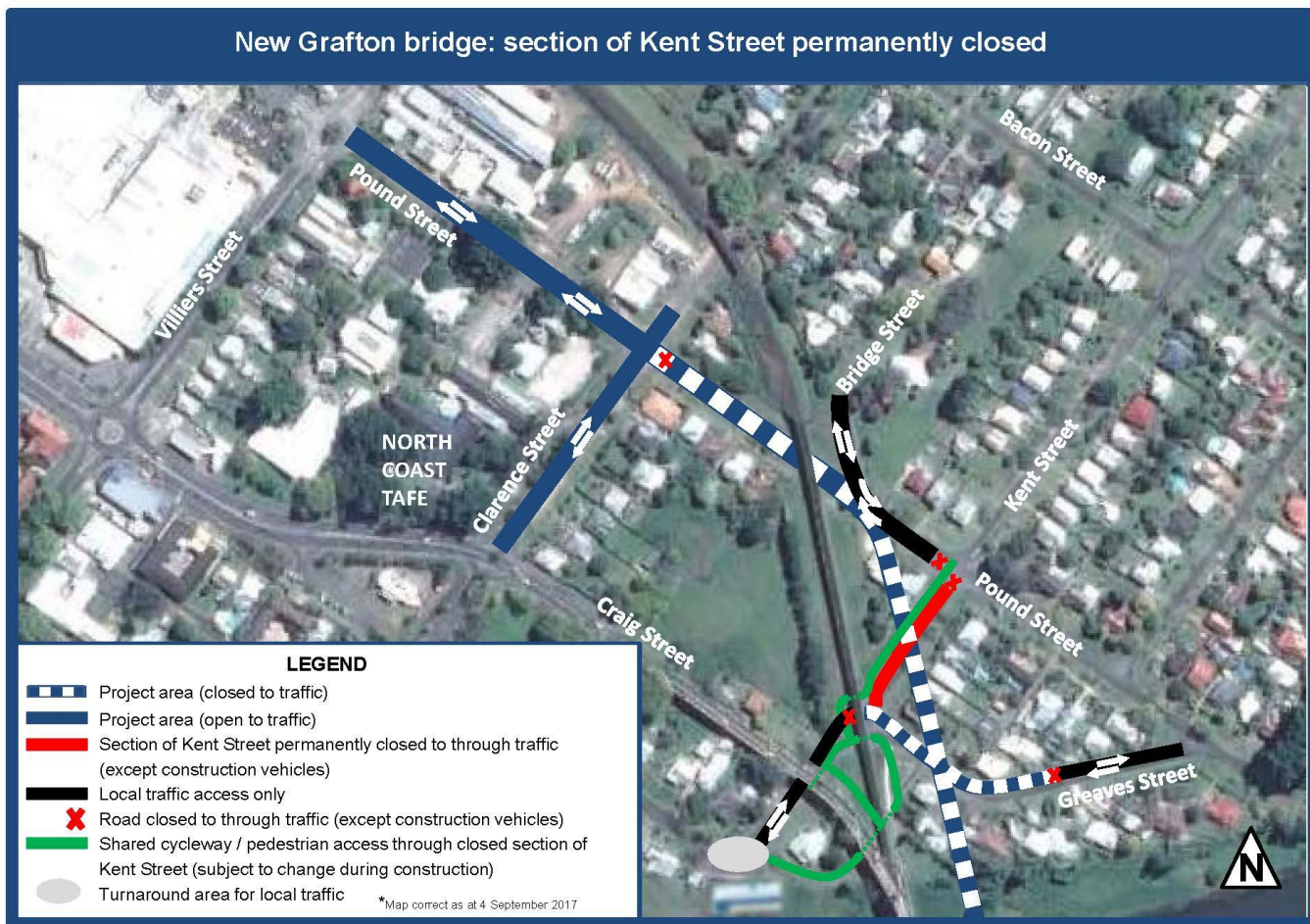
### Contact


If you would like to make an enquiry or complaint, or to register your general feedback, please contact the Community Relations Team on 1800 918 759. Alternatively you can send an email to [graftonbridgecommunity@fultonhogan.com.au](mailto:graftonbridgecommunity@fultonhogan.com.au); write to PO Box 546 Grafton, NSW 2460 or visit the Community Display Centre at the corner of Duke and Pound streets, Grafton.

For more information on this project, visit [www.rms.nsw.gov.au/graftonbridge](http://www.rms.nsw.gov.au/graftonbridge).

---

## Map - Permanent closure of a section of Kent Street




 If you need help understanding this information, please contact the Translating and Interpreting Service on 131 450 and ask them to call us on 1800 918 759