

# Work continuing on the Pacific Highway between Turramurra and Wahroonga

June 2022

We continuing to upgrade the intersections of the Pacific Highway at Fox Valley Road and Redleaf Avenue in Wahroonga. We have made progress on the project despite the significant amount this year.

## What’s happened?

Between April and June, we have been carrying out:

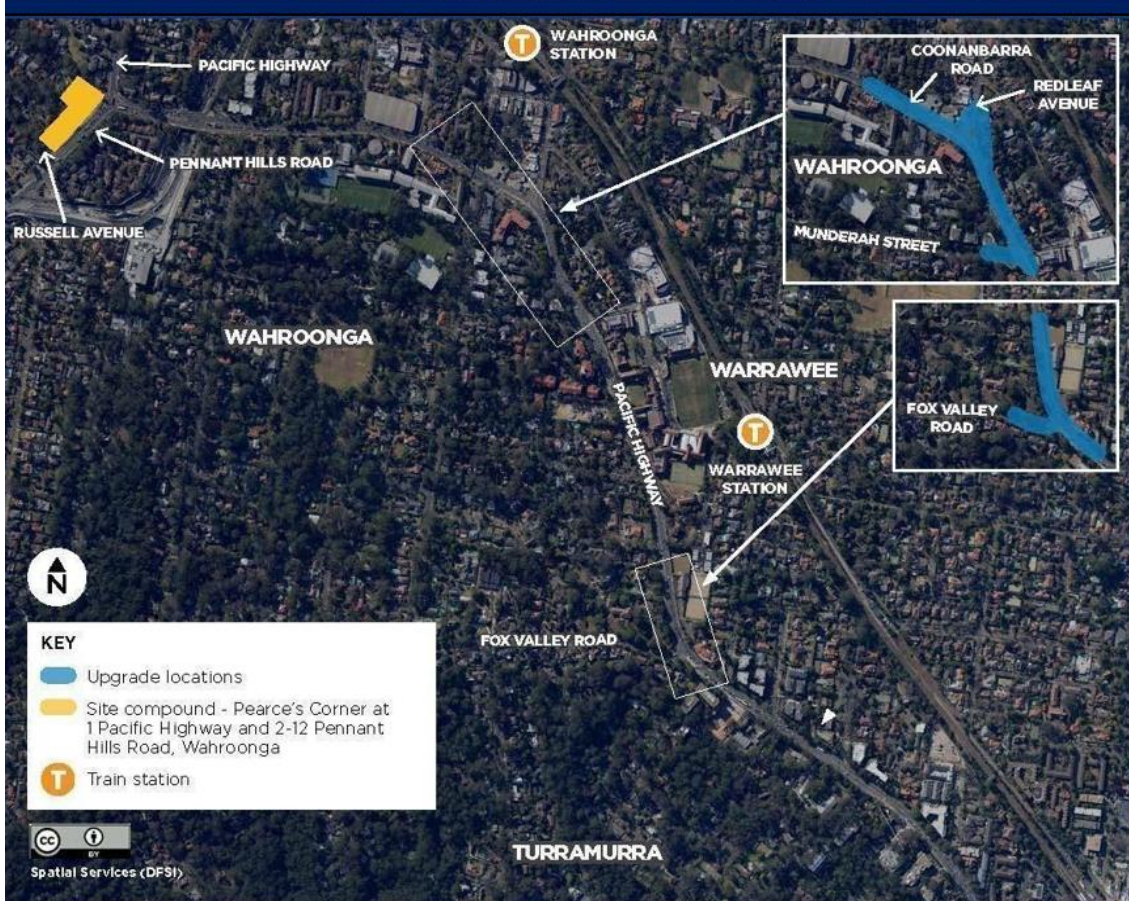
- private property adjustment works
- utilities work to relocate existing pipes and cables
- installation of storm water drainage
- construction of road pavement at Fox Valley Road

## What’s next?

Between July and September, we will continue to carry out:

- private property adjustment works
- installation of storm water drainage
- upgrade of traffic signals at Fox Valley Road
- construction of new traffic signals at Redleaf Avenue
- new pavement works on Pacific Highway from Marshall Avenue to Gilda Avenue

Location of works – Pacific Highway upgrade between Turramurra and Wahroonga



## Our work schedule

We will work up to **64 day shifts** and **63 night shifts** between **Friday 1 July** and **Friday 30 September**, weather and site conditions permitting.

Our day work hours are **7am to 6pm, Monday to Friday** and **8am until 1pm on Saturdays**.

Our night work hours are **8pm** and until **5am** the next day, up to **five nights per week** between **Sunday to Friday**. We will not work during the day on Sundays, public holidays or during heavy rainfall. The project is expected for completion in late 2022.

## How will the work affect you?

There will be noise and disruptions associated with our work.

We will work with the community to minimise impacts, including applying noise mitigation measures to reduce work impacts (such as jackhammering and concrete saw cutting), and completing these noisy tasks before **midnight**.

We will update you as work progresses and notify you prior to any changes to our work schedule.

## Traffic changes

There will be temporary lane closures in place, road and pedestrian detours in place, while we work to ensure the work area is safe for both road users and our workers.

There may also be partial road closure of footpaths in other work areas and clearly marked pedestrian detours will be provided.

Please keep to speed limits and follow signs and traffic controller directions. For the latest traffic updates, call 132 701, visit [livetraffic.com](http://livetraffic.com) or download the Live Traffic NSW app.

## Contact us

If you have any questions, or would like more information on the Pacific Highway upgrade project, please contact our project team:



1800 897 841



[projects@wardcivil.com.au](mailto:projects@wardcivil.com.au)



[nswroads.work/t2w](http://nswroads.work/t2w)



If you need help understanding this information, please contact the Translating and Interpreting Service on **131 450** and ask them to call us on **1800 897 841**