



Australian Government

BUILDING OUR FUTURE



Transport for NSW

Pacific Highway upgrades between Turramurra and Wahroonga

Community Update | September 2020



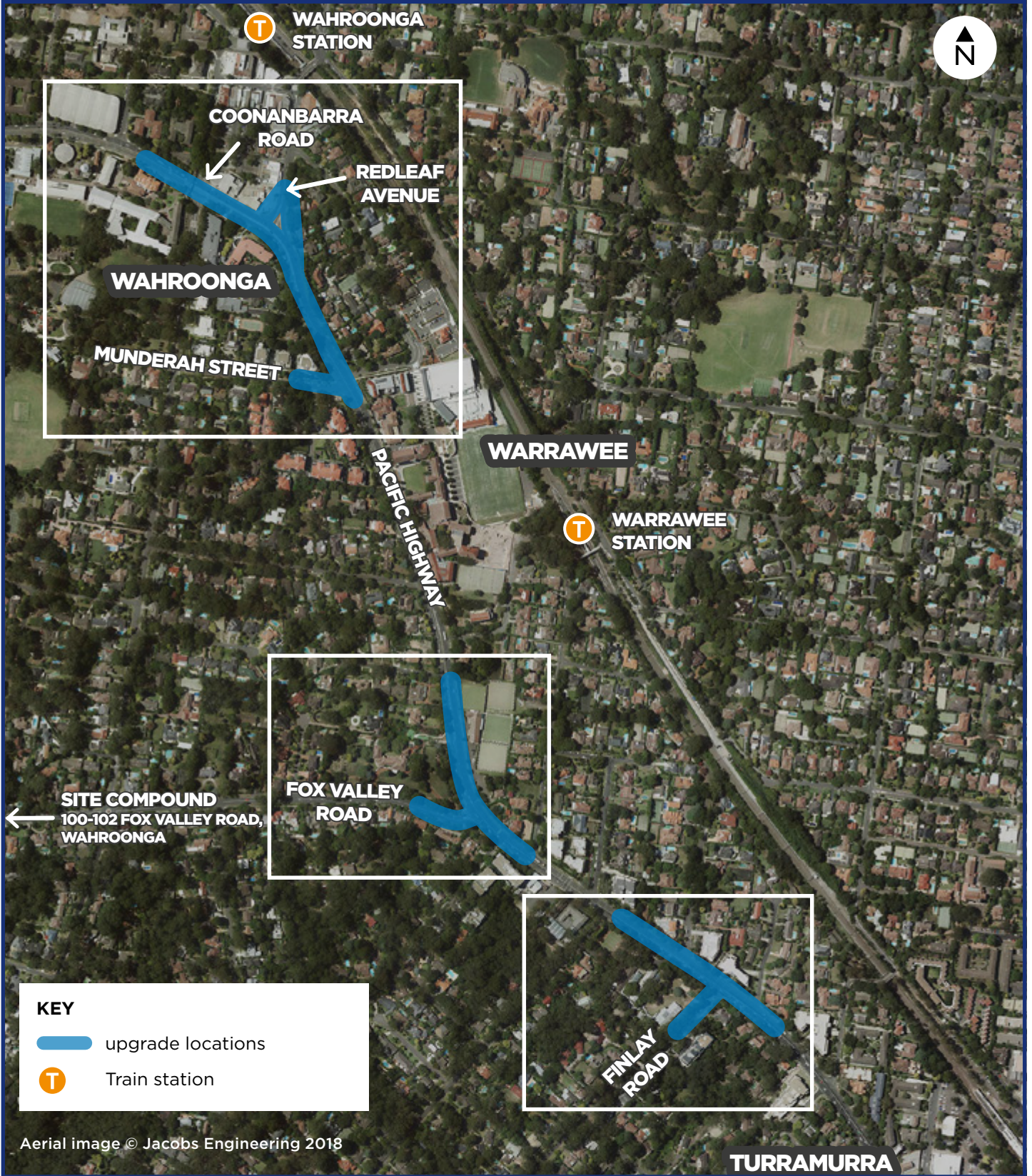
Pacific Highway at Coonanbarra Road: the upgrade will ease congestion at this intersection.

In October 2020, work will start to upgrade intersections along the Pacific Highway between Turramurra and Wahroonga. The NSW Government is funding improvements at intersections on the Pacific Highway at Fox Valley Road, Redleaf Avenue and Coonanbarra Road. The Australian Government and NSW Government are jointly funding upgrades at the Pacific Highway and Finlay Road.

Around 60,000 vehicles travel on the Pacific Highway between Turramurra and Wahroonga each day. Road users traveling along the Pacific Highway often experience congestion and long wait times at the Finlay Road, Fox Valley Road, Redleaf Avenue and Coonanbarra Road intersections, especially those travelling north during the afternoon peak period.

To address this issue, Transport is widening the Pacific Highway to create three continuous northbound lanes and adjusting turning movements to and from the cross streets. This will benefit road users by improving traffic flow, easing congestion and improving travel times for all road users.

Overview of Pacific Highway upgrade project locations



Pacific Highway at Coonanbarra Road and Redleaf Avenue



Pacific Highway and Fox Valley Road



Improving
traffic flow



Save travel time

Pacific Highway and Finlay Road



Improve
pedestrian safety



More time with
family and friends

Community feedback

The community was invited to have their say in September 2018 about the proposed upgrades to the intersections of the Pacific Highway and Finlay Road, the Pacific Highway and Fox Valley Road and the Pacific Highway and Coonanbarra Road and Redleaf Avenue.

We received a lot of feedback from the community on the proposed intersection upgrades.

After considering all responses, along with the project's objectives, we have decided to:

- install traffic lights at the Pacific Highway and Redleaf Avenue intersection and ban the right turn from Redleaf Avenue onto Pacific Highway northbound
- proceed with the proposed upgrade at the Pacific Highway and Coonanbarra Road intersection
- proceed with the proposed upgrade at the Pacific Highway and Fox Valley Road intersection. We will shorten the dedicated left turn lane onto Fox Valley Road from 60 metres as proposed to about 30 metres
- proceed with the upgrade as proposed at the Pacific Highway and Finlay Road intersection.

The community consultation reports and other community notifications for this project are available on our website at nswroads.work/t2w.

What's happening

Pacific Highway and Redleaf Avenue and Coonanbarra Road

At this intersection we will:

- widen the western side of Pacific Highway to provide three continuous northbound lanes
- install traffic lights at the intersection at Redleaf Avenue, including adding pedestrian crossings on the northern and western sides of the intersection
- ban the right turn from Pacific Highway northbound onto Coonanbarra Road and convert the existing right turn lane into a northbound through lane
- change the alignment of the existing right turn lane from Pacific Highway northbound onto Redleaf Avenue
- ban the right turn from Redleaf Avenue onto Pacific Highway northbound
- create an additional left turn lane from Redleaf Avenue onto Pacific Highway southbound.

Pacific Highway and Fox Valley Road

At this intersection we will:

- widen the western side of Pacific Highway to provide three continuous northbound lanes

- provide a dedicated left turn lane from Pacific Highway northbound onto Fox Valley Road
- extend the dedicated right turn lane from Pacific Highway southbound onto Fox Valley Road
- widen the raised median on Pacific Highway northbound, north and south of Fox Valley Road
- ban the right turn from Marshall Avenue onto Pacific Highway southbound.

Pacific Highway and Finlay Road

This intersection upgrade is part of a \$240 million investment by the Australian and NSW Governments to fast-track 11 congestion-busting projects as part of the plan to stimulate the economy as it recovers from the COVID-19.

At this intersection we will:

- provide three continuous northbound lanes
- ban the right turn from Pacific Highway southbound onto Finlay Road
- ban the right turn from Finlay Road onto Pacific Highway southbound.

Please see overleaf the individual maps of these intersections for more details of the upgrade work.

Night works schedule

We will work on this project between October 2020 and late 2022.

We have planned the work schedule so the upgrades can be completed as quickly as possible, limiting the impact on road users and the local community.

We will work during the day when possible.

Our day work hours will be between **7am** and **6pm** from **Monday** to **Friday** and between **8am** to **1pm** on **Saturday**.

However, some of our work will need to be carried out at night to minimise traffic disruption and reduce safety risks to the workers. When necessary, we will work up to five nights a week, weather permitting and excluding public holidays. Our night time work will be from **Sunday** to **Thursday** between **8pm** to **5am** the next day.

We will inform the community of upcoming night work before carrying it out. We will work with the community to minimise the impact of our night works, including implementing mitigation measures to reduce the impact of noisier tasks and completing these tasks by midnight.

If you have any comment on our night works schedule, please contact us on **1800 572 004** or pinchpoint@rms.nsw.gov.au.

Site compound establishment

We will establish a site compound at 100-102 Fox Valley Road. The site compound will be used to store materials and equipment, as a site office and provide amenity sheds and car parking for workers.

There is an existing structure at 100 Fox Valley Road that will be demolished to set up the site compound. We will inform the community near the site compound before the start of the demolition work.

Tree and plant removal

To widen the Pacific Highway, we need to clear vegetation from the western side of the road, including from private properties. At the end of the project, we will replace this vegetation.

Wahroonga Station upgrade

As part of the NSW Government's Transport Accessibility Program, we will upgrade the Wahroonga Station to improve accessibility for those with a disability, limited mobility, carers/parents with prams and customers with luggage.

The upgrade includes construction of a new lift to provide access between the Redleaf Avenue Bridge and the station platforms, as well as other features including provision of a family accessible toilet, an additional kiss and ride and a new accessible parking space in close proximity to the station entry.

Work on the upgrade is expected to start in late 2020.

You can find out more about the Wahroonga Station Upgrade at www.transport.nsw.gov.au/wahroonga



Pacific Highway at Fox Valley Road: the upgrade will reduce congestion at this intersection.



Pacific Highway at Finlay Road: the upgrade will improve safety at this intersection by banning unsafe right turns.

Next steps

We will inform the community before work starts and will keep the community updated as the project progresses.

If you have any comments or concerns about the project, you can contact the project team by telephone or email using the contact details below.

What is a pinch point?

A pinch point is a traffic congestion point, either at an intersection or on a short length of road, where a traffic bottleneck exists. They cause traffic build-up and travel delays at these spots and on the wider road network.

To see more on these completed upgrades and to learn of upcoming pinch points in Sydney's west, visit nswroads.work/pinchpoints

Join our mailing list

Keep up to date on the progress of our work on the Pacific Highway by joining our mailing list. Email pinchpoint@rms.nsw.gov.au or sign up to the project webpage nswroads.work/t2w

Contact us

To ensure we protect public health and safety during the Coronavirus outbreak, we need to change the way we engage with the community. Please be assured we will continue to respond to any questions or concerns you may have about our work. If you have any questions, please contact us on:



1800 572 004
(during business hours)



pinchpoint@rms.nsw.gov.au



nswroads.work/t2w



**Pacific Highway - Pinch Point,
Transport for NSW, PO Box 973,
Parramatta, NSW 2124**



Translating and Interpreting Service

If you need an interpreter, please call the Translating and Interpreting Service (TIS National) on **131 450** and ask them to telephone Transport for NSW on 1800 572 004.

Cantonese

若你需要口譯員，請致電**131 450**，聯絡翻譯口譯服務署 (TIS National)，要求他們致電1800 572 004，聯絡Transport for NSW。

Mandarin

如果你需要口譯員，請致電**131 450**，联系翻译口译服务署 (TIS National)，要求他们致电1800 572 004，联系Transport for NSW。

Korean

통역사가 필요하시면 통번역서비스 (TIS National)에 **131 450**으로 전화하여 Transport for NSW에 1800 572 004번으로 전화하도록 요청하십시오.

Persian

اگر به مترجم شفاهی نیاز دارید، لطفاً با خدمات ترجمه کتبی و شفاهی (تیس نشنال) با شماره **131 450** تماس بگیرید و از آنها بخواهید که به حمل و نقل برای نیوساوت ولز به شماره 1800 572 004 زنگ بزنند.

Japanese

通訳が必要な場合は、翻訳通訳サービス (TIS National) をご利用ください。**131 450** に電話をかけ、Transport for NSW (電話 : 1800 572 004) に電話するよう頼んでください。

Hindi

यदि आपको दुभाषिण की आवश्यकता है तो अनुवाद एवं दुभाषिया सेवा (TIS National) को **131 450** पर फोन करें और उन्हें ट्रांसपोर्ट फोर NSW (Transport for NSW) से 1800 572 004 पर फोन करने को कहें।

Spanish

Si necesita un intérprete, llame al Servicio de Traducción e Interpretación (TIS National) al **131 450** y pida que llamen a Transport for NSW al 1800 572 004.



September 2020
TfNSW 20.303

Privacy Transport for NSW ("TfNSW") is subject to the Privacy and Personal Information Protection Act 1998 ("PIIP Act") which requires that we comply with the Information Privacy Principles set out in the PIIP Act. All information in correspondence is collected for the sole purpose of assisting in the delivery of this project. The information received, including names and addresses of respondents, may be published in subsequent documents unless a clear indication is given in the correspondence that all or part of that information is not to be published. Otherwise TfNSW will only disclose your personal information, without your consent, if authorised by the law. Your personal information will be held by TfNSW at 27 Argyle Street, Parramatta. You have the right to access and correct the information if you believe that it is incorrect.