

# Work continuing on the Pacific Highway between Turramurra and Wahroonga

June 2021

Since our last update in March, we have continued work to upgrade the intersections of the Pacific Highway at Fox Valley Road and Redleaf Avenue in Wahroonga.

## What's happened?

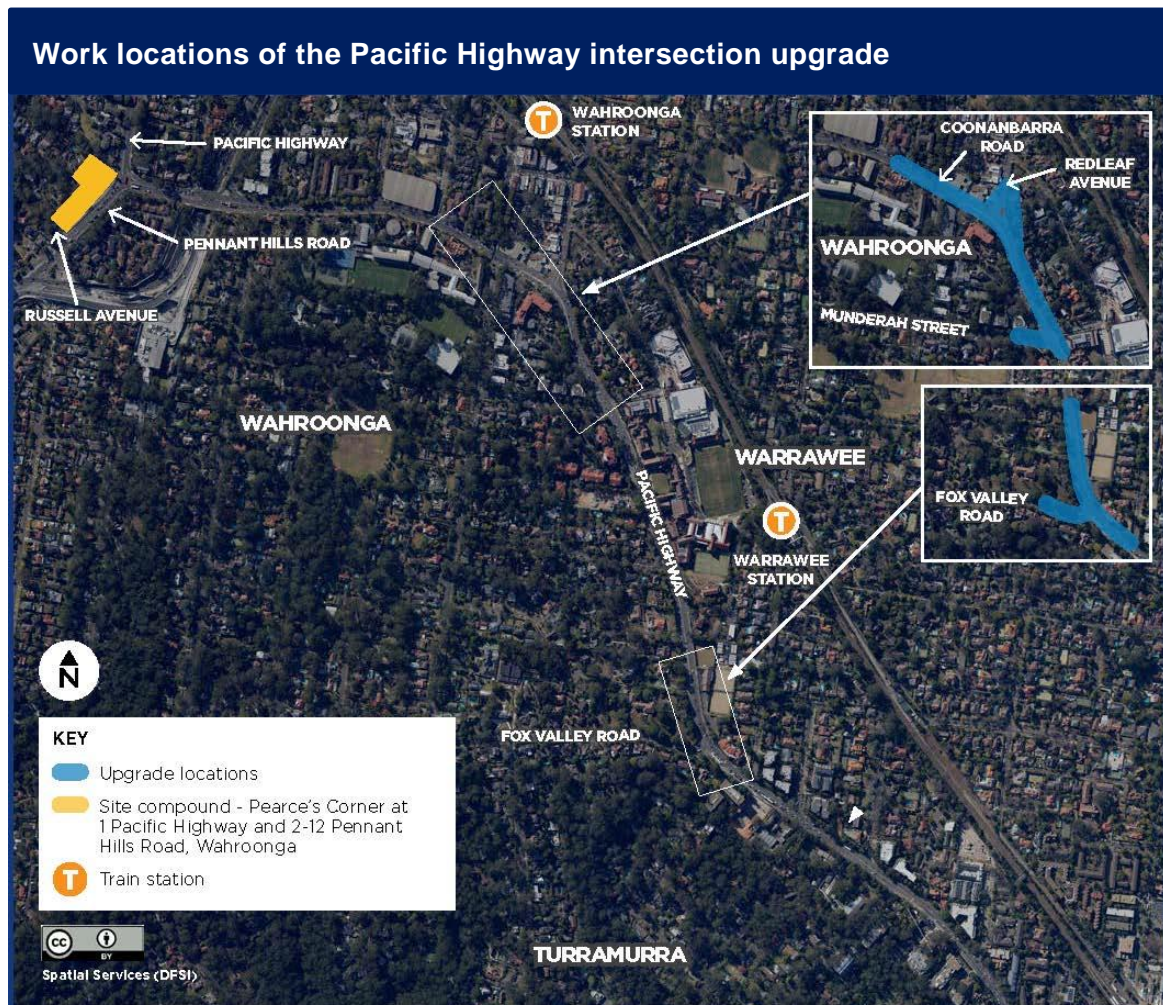
Between April and June 2021, we have:

- continued with private property adjustments such as constructing of retaining walls and landscaping
- continued utility relocations such as moving pipes and cables to make way for the road widening
- relocated the project site compound to Pearce's Corner, 2-12 Pennant Hills Road, Wahroonga.

## What's next?

During July and September 2021, our work on the Pacific Highway at Redleaf Avenue and Fox Valley Road will continue and will include:

- continue with private property adjustments work
- continue utilities relocation
- continue traffic signal works
- start road pavement work such as concreting and asphaltting.



## Our work schedule

We will work up to **63 day shifts** and **64 night shifts** between **Thursday 1 July** and **Wednesday 30 September**, weather permitting.

Our day work hours will be between **7am** and **6pm Monday to Friday** and **Saturday** between **8am** and **1pm**. Our night work hours will be between **8pm** to **5am**, from **Sunday** to **Thursday**.

We will not work during the day on Sundays, public holidays or during heavy rainfall.

## Contact us

If you have any questions, please contact our delivery partner, Ward Civil on **1800 897 841** or **projects@wardcivil.com.au**

For more information on this project, visit [nswroads.work/t2w](https://nswroads.work/t2w)

Thank you for your patience during this important work.

## How will the work affect you?

There will be noise and disruptions associated with our work. We will work with the community to minimise the impact, including implementing mitigation measures to reduce the impact of noisier tasks (such as jackhammering and concrete saw cutting) and completing these tasks before **midnight**. We will inform you as work progresses and notify you of any changes to our work schedule.

## Temporary footpath closure on Pacific Highway extended

The footpath on the western side of the Pacific Highway between Ada Avenue and 1610 Pacific Highway has been closed since December 2020. We need to extend this closure until March 2022 to allow for property adjustment works, utility relocations and pavement construction to be completed safely.

## Traffic changes

There will be temporary lane closures in place while we work to ensure the work area is safe for road users and our workers. There may also be partial closure of footpaths in other work areas and clearly marked pedestrian detours will be provided. Please keep to speed limits and follow signs and traffic controller directions. For the latest traffic updates, call 132 701, visit [livetraffic.com](https://livetraffic.com) or download the Live Traffic NSW app.

## Nearby Transport project - Wahroonga Station

Transport for NSW is upgrading Wahroonga Station to make the station accessible to people with a disability, limited mobility, parents/ carers with prams and customers with luggage. Construction is ongoing and is expected to be completed in 2022. If you would like more information on this project, you can call 1800 684 490 or send an email to [projects@transport.nsw.gov.au](mailto:projects@transport.nsw.gov.au)



If you need help understanding this information, please contact the Translating and Interpreting Service on 131 450 and ask them to call us on 1800 897 841.