

Work continuing on the Pacific Highway between Turramurra and Wahroonga

March 2022

Since our last update in January, we continued to upgrade the intersections of the Pacific Highway at Fox Valley Road and Redleaf Avenue in Wahroonga.

What's happened:

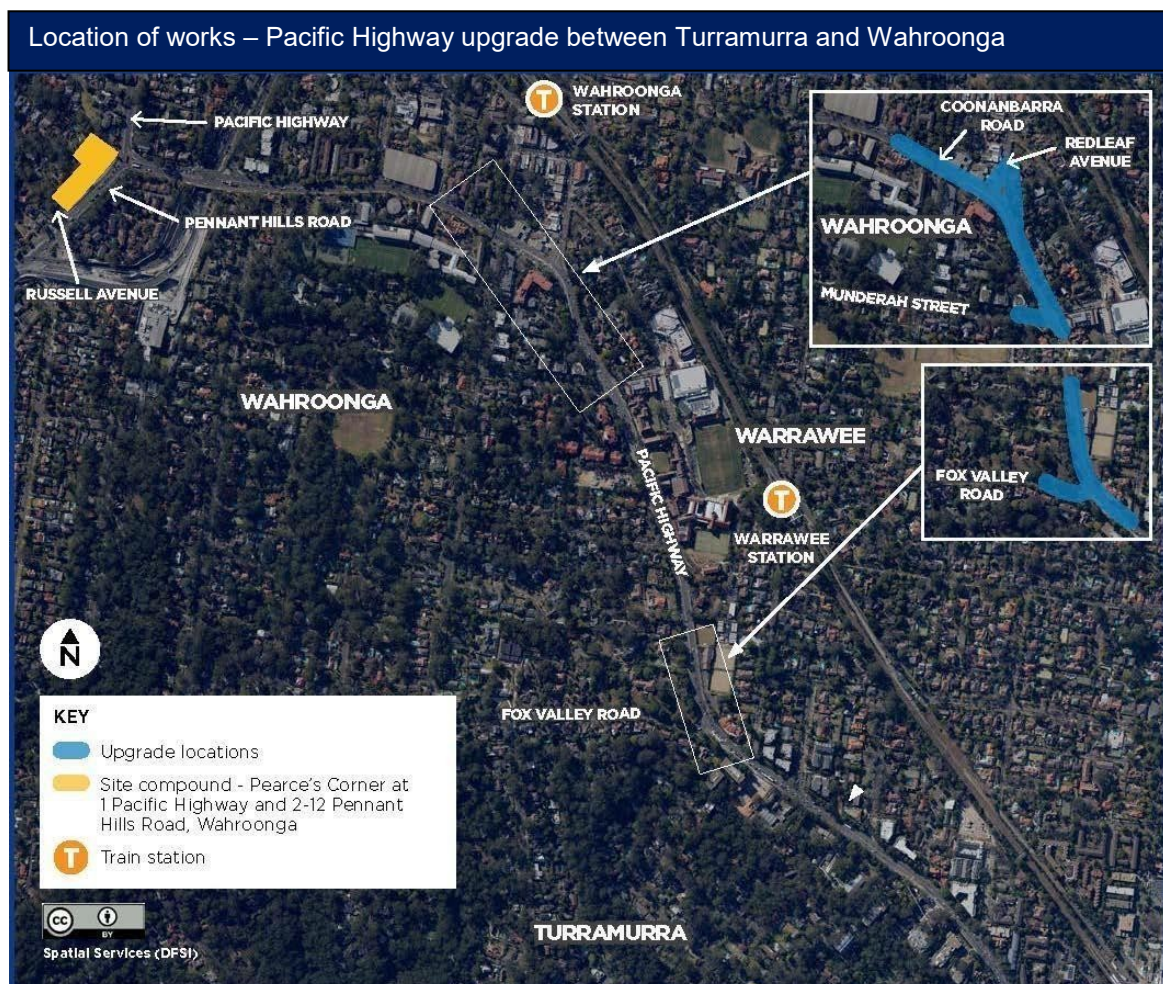
Between January and March, we have carried out:

- private property adjustment works
- utilities work to relocate existing pipes and cables
- installation of storm water drainage
- the upgrade of traffic signals at Fox Valley Road
- construction of road pavement at Fox Valley Road.

What's next:

Between April and June, we will continue to carry out:

- private property adjustments
- installation of storm water drainage
- the upgrade of traffic signals at Fox Valley Road
- traffic light installations, with one at Redleaf Avenue starting
- the construction of new pavement on Pacific Highway from Marshall Avenue to Gilda Avenue.



Our work schedule

We will work up to **65 day shifts** and **60 night shifts** between **Friday 1 April** and **Thursday 30 June**, weather and site conditions permitting.

Our day work hours are **7am to 6pm, Monday to Friday** and **8am until 1pm on Saturdays**.

Our night work hours are **6pm until 5am** the next day, **Sunday to Thursday**. There will be no night shifts on Fridays or Saturdays. We will not work during the day on Sundays, public holidays or during heavy rainfall.

How will the work affect you?

There will be noise and disruptions associated with our work.

We will work with the community to minimise impacts, including applying noise mitigation measures to reduce work impacts (such as jackhammering and concrete saw cutting), and completing these noisy tasks before **midnight**.

We will update you as work progresses and notify you prior to any changes to our work schedule.

Traffic changes

There will be temporary lane closures in place, road and pedestrian detours in place, while we work to ensure the work area is safe for both road users and our workers. There may also be partial closure of footpaths in other work areas and clearly marked pedestrian detours will be provided.

Please keep to speed limits and follow signs and traffic controller directions. For the latest traffic updates, call 132 701, visit livetraffic.com or download the Live Traffic NSW app.

Public holiday shutdown period

The construction site will be closed over the upcoming holiday period:

- **Easter Holiday:** from **6pm on Thursday 14 April** until **7am on Tuesday 19 April**
- **Anzac Day:** from **6pm on Friday 23 April** and until **7am on Tuesday 26 April**

Contact us

If you have any questions, or would like more information on the Pacific Highway upgrade project, please contact our project team:



1800 897 841



projects@wardcivil.com.au



nswroads.work/t2w



If you need help understanding this information, please contact the Translating and Interpreting Service on **131 450** and ask them to call us on **1800 897 841**