

Pacific Highway upgrades between Turramurra and Wahroonga

Roads and Maritime Services | September 2018

The NSW Government is investigating Pacific Highway upgrades as part of its \$300 million Urban Roads Pinch Point Program, which aims to reduce congestion and improve travel times on Sydney's busiest corridors.

Roads and Maritime Services is delivering this project to ease congestion, deliver reliable travel times and improve safety for road users on the Pacific Highway between Turramurra and Wahroonga.



Pacific Highway at Coonanbarra Road and Redleaf Avenue, Wahroonga

Why does Pacific Highway between Turramurra and Wahroonga need upgrading?

Currently, motorists experience heavy congestion, slow travel times and delays when travelling between Turramurra and Wahroonga, particularly during the afternoon peak period. We are proposing to widen the road to provide three continuous northbound lanes and maintain three continuous southbound lanes along this section of the busy corridor.

Road widening and other proposed improvements would provide significant benefits for the 60,000 motorists who use the Pacific Highway every day, particularly in the afternoon peak for motorists travelling northbound.

Upgrade benefits:

- northbound travel time savings
- improved traffic flow and efficiency at the intersections
- reduced queue lengths and delays at the intersections
- improved road safety along the corridor through removal of right turn movements
- improved pedestrian and road user safety at the intersection of Pacific Highway and Redleaf Avenue by removing the southbound slip lane and providing a pedestrian refuge on Redleaf Avenue
- improved road safety at the intersections of Pacific Highway at Fox Valley Road, and at Coonanbarra Road and Redleaf Avenue, by realigning the curve of the road and traffic lanes.

Proposed upgrade work

Potential upgrades would include road widening, adjustments to traffic lanes, medians, traffic lights, footpaths, drainage, utilities and road resurfacing.

Road widening will require strip adjustments to a small number of properties on the northbound side of Pacific Highway, between Turramurra and Wahroonga. Roads and Maritime are in contact with all potentially impacted property owners.

Road widening works will also impact roadside vegetation. We will do everything we can to minimise loss of vegetation.

Although we may not have the capacity to fund all potential Pacific Highway upgrades, our decision will be informed by community and stakeholder feedback.

Potential upgrades at each project location could include:

Pacific Highway and Finlay Road

- widening on the northbound side of Pacific Highway (north and south of Finlay Road) to provide three continuous northbound through lanes
- banning the right turn from Pacific Highway southbound into Finlay Road to accommodate three continuous northbound through lanes
- banning the right turn from Finlay Road onto Pacific Highway southbound to improve safety.

Pacific Highway and Fox Valley Road

- widening on the northbound side of Pacific Highway (north and south of Fox Valley Road) to provide three continuous northbound through lanes
- maintaining the left turn lane from Pacific Highway northbound into Fox Valley Road
- extending the right turn bay from Pacific Highway southbound into Fox Valley Road
- widening the raised median on Pacific Highway northbound (north and south of Fox Valley Road) to improve road curve and lane alignment
- banning the right turn from Marshall Avenue onto Pacific Highway southbound to improve safety
- providing a 'Do Not Queue Across Intersection' sign on Pacific Highway southbound at Borambil Avenue.

Pacific Highway at Coonanbarra Road and Redleaf Avenue

- widening on the northbound side of Pacific Highway (north and south of Redleaf Avenue) to provide three continuous northbound through lanes
- banning the right turn from Pacific Highway northbound into Coonanbarra Avenue to improve safety
- maintaining the right turn bay from Pacific Highway northbound into Redleaf Avenue
- widening the raised median on Pacific Highway northbound (south of Redleaf Avenue) to improve road curve and lane alignment
- removing the Redleaf Avenue onto Pacific Highway southbound left turn slip lane to create a safer T-intersection
- providing a pedestrian refuge on Redleaf Avenue
- providing a new drainage network.

What has happened so far?

Roads and Maritime carried out investigation work on Pacific Highway between Ku-ring-gai Avenue, Turramurra and Coonabarra Avenue, Wahroonga from March to June 2018.

This work identified potential Pacific Highway upgrade projects at:

- Pacific Highway and Finlay Road, Warrawee/Turramurra
- Pacific Highway and Fox Valley Road, Wahroonga/Warrawee
- Pacific Highway at Redleaf Avenue and Coonabarra Road, Wahroonga.

To further inform potential corridor upgrade planning and development we will carry out additional investigation work at the intersections of Pacific Highway and Fox Valley Road and Pacific Highway and Coonabarra Road.

Proposed work includes locating utilities, digging trenches, potholing and cutting and reinstating the road surface and footpath.

We have included a map to show the location of work (area 2 and 3 of overview map).

Investigation work schedule

We will be on site for **ten day shifts** and **ten night shifts** between **Monday 17 September** and **Friday 30 November 2018**, weather permitting.

Our **day work hours** will be between **7am** and **6pm**, from **Monday** to **Friday**. Our **night work hours** will be between **8pm** and **5am**, from **Sunday** to **Thursday**. There may be some works on **Saturdays**, between **7am** and **1pm**, if required.

We will not work on public holidays.

How will the work affect you?

Our work may be noisy at times but we will do everything we can to minimise its impact, including completing the noisier activities, like saw-cutting concrete, jack-hammering and breaking up concrete, by **midnight**.

Traffic changes

There will be some temporary traffic changes to ensure the work zone is safe. Lane closures may be in place and will affect travel times. Please keep to speed limits and follow the directions of traffic controllers and signs.

For the latest traffic updates, you can call 132 701, visit livetraffic.com or download the Live Traffic NSW App.

If you have feedback or concerns about the investigation work schedule please contact Roads and Maritime on 1800 572 004 or pinchpoint@rms.nsw.gov.au.

What is happening now?

We are now seeking community feedback on potential Pacific Highway upgrades, between Turramurra and Wahroonga. We would like to hear from you the proposed upgrades by **Friday 28 September 2018**.

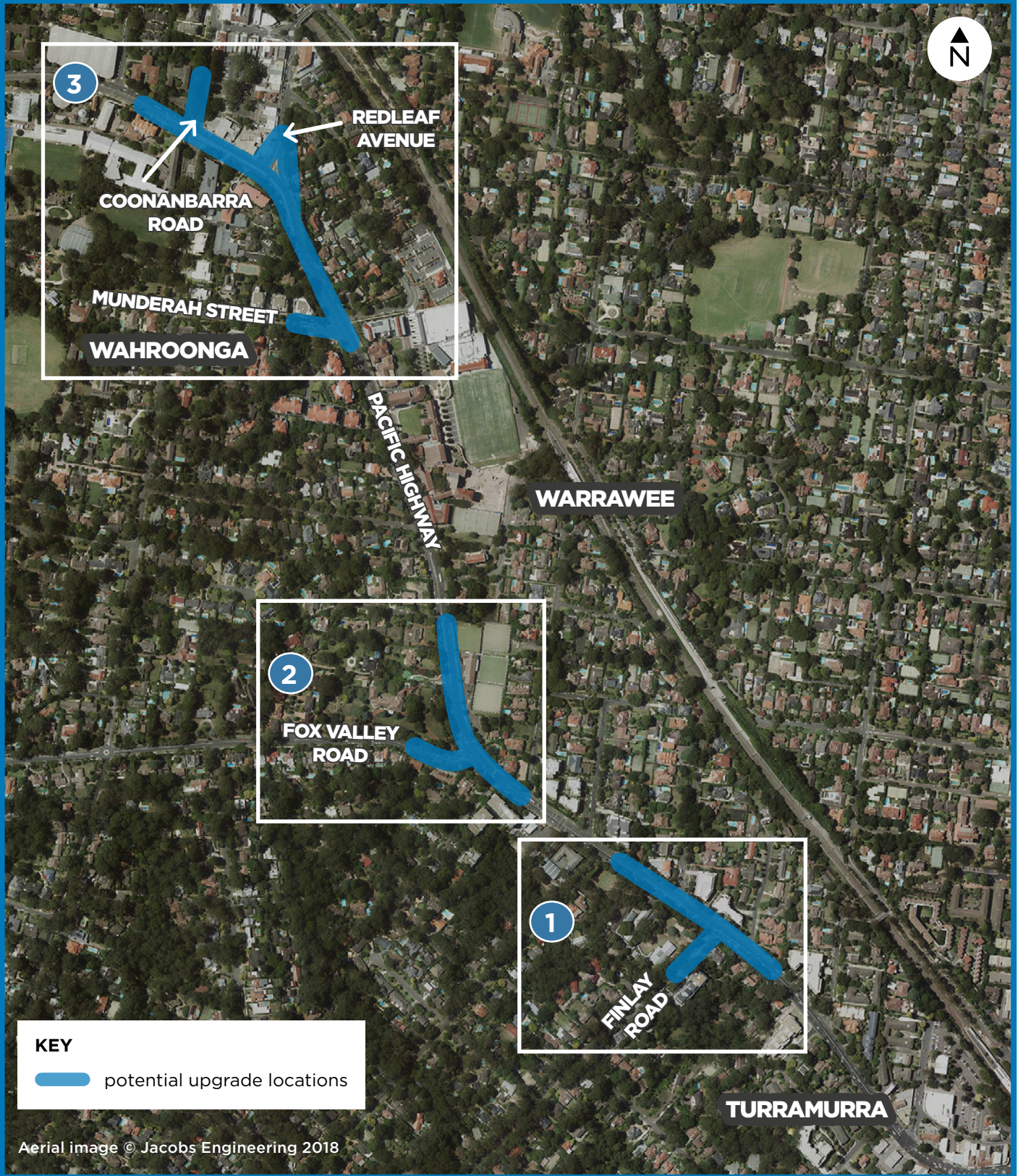
Talk to our project team

We will be talking to the community about potential Pacific Highway upgrades during the community consultation period.


For information on planned **pop up kiosks** or **community sessions** please visit the project webpage: rms.nsw.gov.au/projects/sydney-north/pacific-hwy-turramurra-wahroonga or contact the Pinch Point project team on 1800 572 004 or pinchpoint@rms.nsw.gov.au.

Further information on this project, including 'Frequently asked Questions', can also be found on the project webpage.

Overview of potential Pacific Highway upgrade project locations



KEY

 potential upgrade locations

 **Three**
northbound lanes

 **Easing**
congestion

 **Improving**
safety

1. Pacific Highway and Finlay Road



Improving traffic flow

Improving safety

Improving road alignment

2. Pacific Highway and Fox Valley Road



Improving traffic flow

Improving road alignment

Improving safety

3. Pacific Highway at Coonanbarra Road and Redleaf Avenue



Improving traffic flow

Improving safety

Improving road alignment

Next steps

After the consultation period closes we will carefully review all feedback. A community consultation report will be prepared summarising the feedback received and our responses to matters raised by the community during the consultation period.

This report will be made available on our website.

If you would like to receive the consultation report by email, please sign up on the project web page or contact us directly.

We will continue to keep the community updated as the project progresses.

What else is Roads and Maritime doing to improve traffic flow on Pacific Highway?

Under the \$300 million Urban Roads Pinch Point Program work is also continuing on improvements at the Pacific Highway, Mona Vale Road and Ryde Road intersection.

Under the \$121 million Clearways Program new weekend and extended weekday clearways have recently been implemented on Pacific Highway between Wahroonga and Pymble, and between Chatswood and Artarmon.

For more information please refer to **Pinch Point Program** or **Sydney Clearways Program** web pages for the latest information on current projects.

What is a 'pinch point'?

A pinch point is a traffic congestion point, either at an intersection or on a short length of road, where a traffic bottleneck exists. They cause traffic build-up and travel delays at these spots and on the wider road network.

Have your say

We invite your feedback on potential Pacific Highway upgrades by **Friday 28 September 2018**.

We will carefully consider all community feedback before deciding how to proceed with each potential Pacific Highway upgrade project. You can provide your comments by:



1800 572 004 during business hours



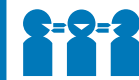
pinchpoint@rms.nsw.gov.au



The Pinch Point Program project team
Roads and Maritime Services
PO Box 973, Parramatta NSW 2124



rms.nsw.gov.au/projects/sydney-north/pacific-hwy-turramurra-wahroonga



131 450

If you need help understanding this information, please contact the Translating and Interpreting Service on 131 450 and ask them to call us on 1800 572 004.



September 2018

RMS 18.999

Privacy Roads and Maritime Services ("RMS") is subject to the Privacy and Personal Information Protection Act 1998 ("PPIP Act") which requires that we comply with the Information Privacy Principles set out in the PPIP Act. All information in correspondence is collected for the sole purpose of assisting in the delivery this project. The information received, including names and addresses of respondents, may be published in subsequent documents unless a clear indication is given in the correspondence that all or part of that information is not to be published. Otherwise RMS will only disclose your personal information, without your consent, if authorised by the law. Your personal information will be held by RMS at 27 Argyle Street, Parramatta. You have the right to access and correct the information if you believe that it is incorrect.

