



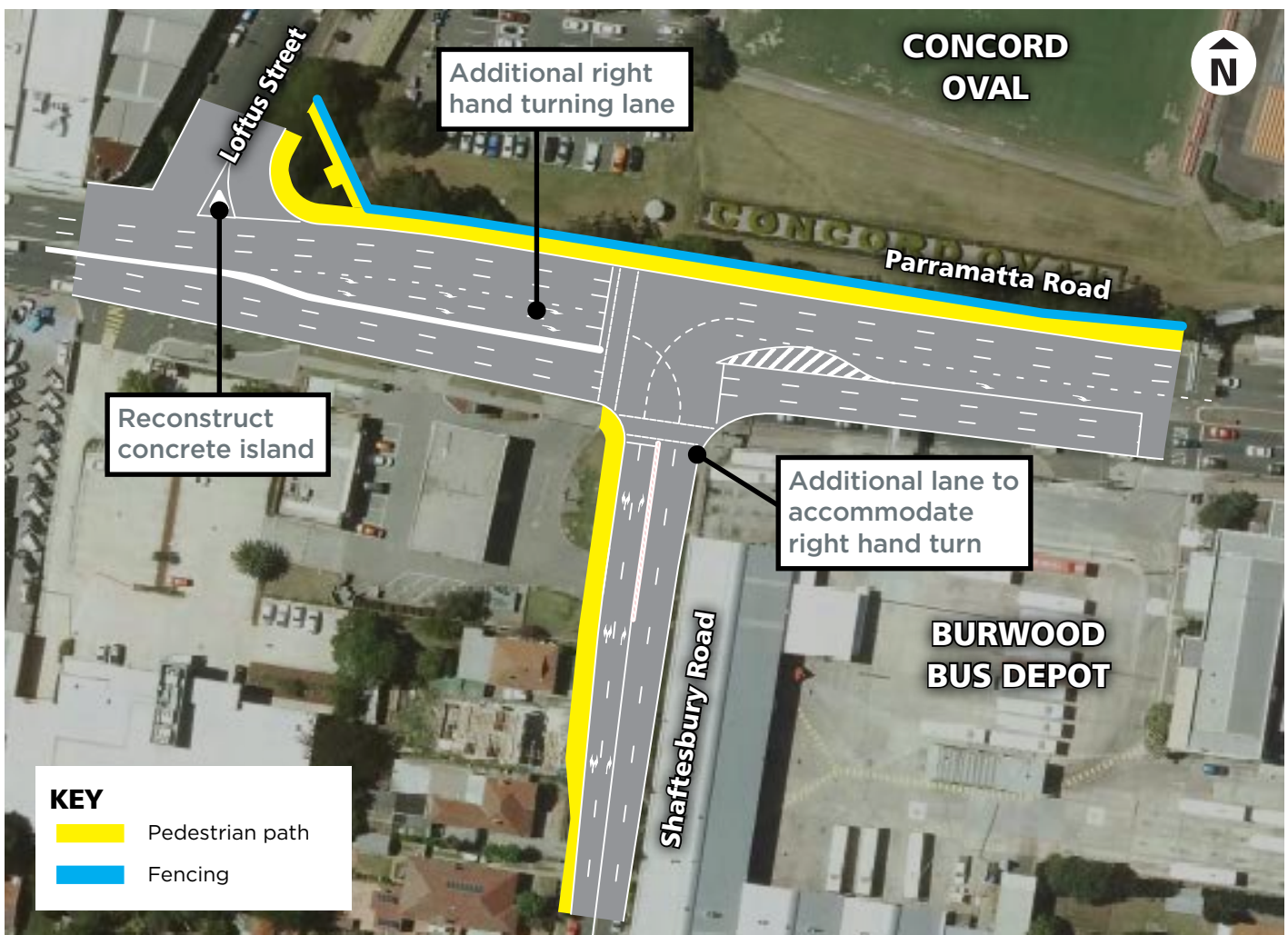
Transport for NSW

# Intersection upgrade on Parramatta Road and Shaftesbury Road, Concord

Project update | August 2020



The NSW Government is funding this project to help ease congestion and improve safety in NSW.

In May 2020, work began on intersection improvements on Parramatta Road and Shaftesbury Road, Concord. The upgrade involves widening the roadway alongside Concord Oval to allow construction of a new right turn only lane on Parramatta Road. An extra lane will also be constructed on Shaftesbury Road. This will increase the number of vehicles able to clear the intersection with each traffic light phase, helping reduce eastbound congestion on Parramatta Road.



Location of work at the intersection of Parramatta Road and Shaftesbury Road, Concord

## KEY

-  Pedestrian path
-  Fencing

## Work to date

The construction area has been established, with concrete barriers, fencing and signage erected. We have begun the earthworks, removing up to 1000 tonne of material from site. We have also begun the relocation of utilities such as power, gas and telecommunications, as well as the intersection's extensive new drainage infrastructure.

## Next steps

In the coming months we will begin the road widening, which involves constructing the new pavement, kerbs and gutters, as well as rebuilding the concrete island on Loftus Street. We will also complete the final resurfacing and line marking of the intersection, and landscaping along Parramatta Road outside Concord Oval.

## Work schedule

We will work up to six days and five nights a week for the remainder of the project. The project is expected to be completed in **early 2021**.

Our night work hours are **6pm to 7am, Sunday to Friday**. Our day work hours are **7am to 6pm, Monday to Friday** and **8am to 1pm Saturdays**.

## How will the work affect you?

Our work may be noisy at times, but we will do everything we can to minimise its impact, including completing the noisier activities, such as concrete cutting, chain sawing and jack-hammering, by midnight.

## Traffic changes

There will be temporary traffic changes during our work hours to ensure the work zone is safe. Please keep to speed limits and follow signs and traffic controllers' directions.

For the latest traffic updates, you can call **132 701**, visit [livetraffic.com](http://livetraffic.com) or download the **Live Traffic NSW App**.

## Contact us

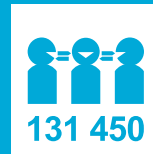
To ensure we protect public health and safety during the Coronavirus outbreak, we need to change the way we consult with the community.

Please be assured we'll continue to respond to any questions or concerns you may have about our work.

If you have any questions or would like more information on the project please contact our delivery partner, **Ventia Boral Amey**:

 **1800 677 700**

 **nswenquiries@vbajv.com.au**



If you need help understanding this information, please contact the **Translating and Interpreting Service** on **131 450** and ask them to call us on **1800 677 700**.



The intersection of Parramatta Road and Shaftesbury Road



August 2020

*Privacy Transport for NSW ("TfNSW") is subject to the Privacy and Personal Information Protection Act 1998 ("PPIP Act") which requires that we comply with the Information Privacy Principles set out in the PPIP Act. All information in correspondence is collected for the sole purpose of assisting in the delivery of this project. The information received, including names and addresses of respondents, may be published in subsequent documents unless a clear indication is given in the correspondence that all or part of that information is not to be published. Otherwise TfNSW will only disclose your personal information, without your consent, if authorised by the law. Your personal information will be held by TfNSW at 27 Argyle Street, Parramatta. You have the right to access and correct the information if you believe that it is incorrect.*