



Transport Access Program

Birrong Station Upgrade

Project Update

September 2020



Transport for NSW is upgrading Birrong Station to make it easier for everyone to access, including people with a disability or limited mobility, parents/carers with prams, and customers with luggage.

Upcoming activities in September include:

- Continuing site establishment, surveying and investigation work
- Installing temporary hoarding around the platform, CCTV, Opal readers and lighting
- Ongoing relocation and installation of new services
- Finishing work for the opening of the temporary footbridge
- Construction of the new station entry.

Equipment to be used includes surveying equipment, vacuum trucks, mini loaders, concrete and haulage trucks, excavators, cranes, elevated work platforms and hand tools.

Traffic control may be in place intermittently throughout this work as required.

For more information call 1800 684 490,

Email projects@transport.nsw.gov.au or visit transport.nsw.gov.au/birrong

For urgent enquiries or complaints regarding construction activities, please call 24 hours 1800 775 465.

Night work Monday 21 to Friday 25 September 2020

For the safety of our staff and customers, night work will take place from Monday 21 to Friday 25 September between 6pm and 7am, subject to approval. The work is scheduled during a Sydney Trains trackwork period, when trains aren't running.

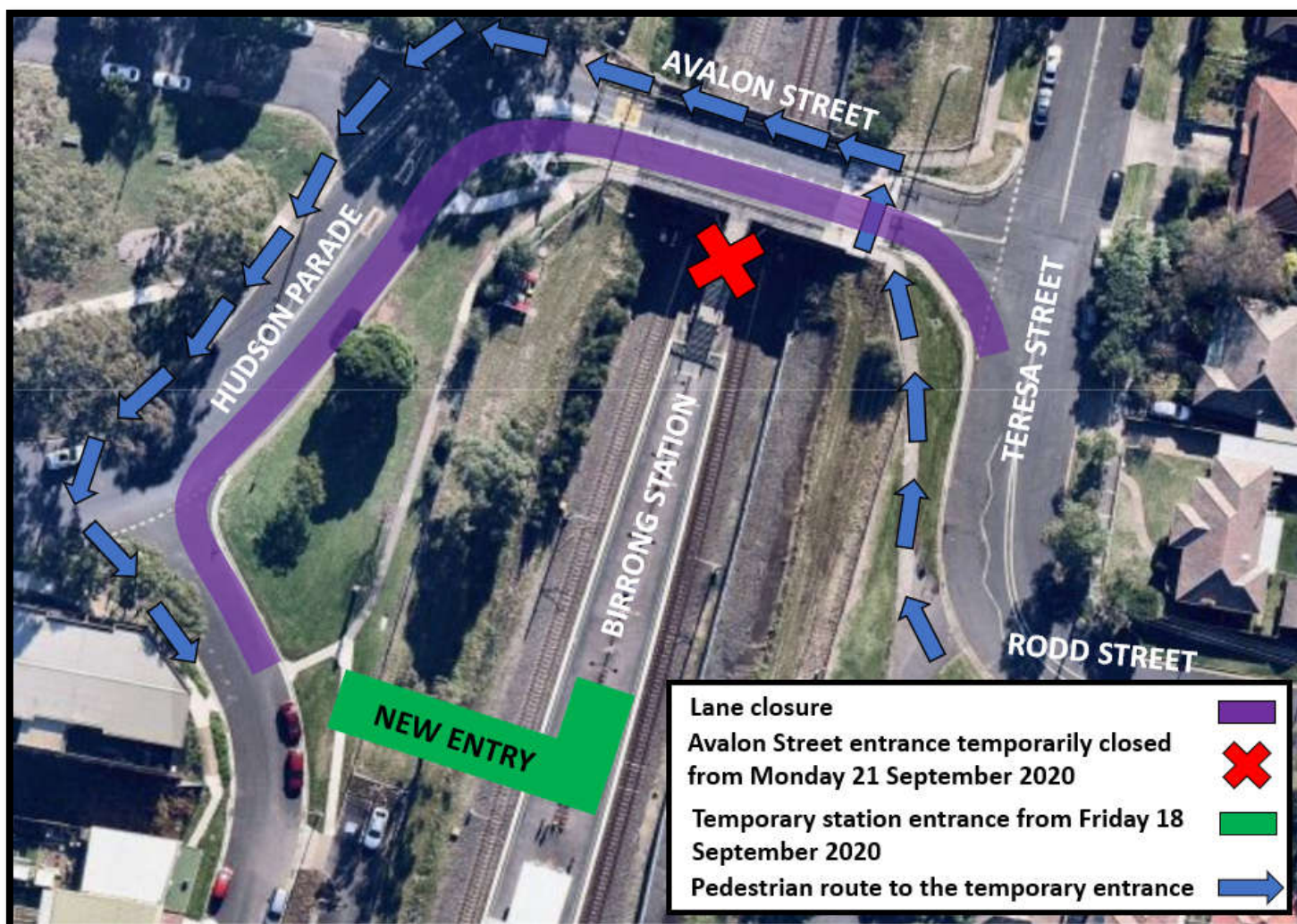
The work will include:

- Installation of platform hoarding
- Demolition and removal of the existing stairs from Avalon Street
- Services investigation and surveying
- Delivery of materials.

The work will involve an excavator, concrete saw, crane, generator, trucks, lighting towers, elevated work platform, and hand tools.

This work will be noisy at times. However, wherever possible measures to reduce noise will be implemented including turning equipment off when not in use, positioning equipment as far away from residences as possible, monitoring noise, using non-tonal reversing beepers and stopping work for respite periods.

From Monday 21 to Friday 25 September between 10pm and 5am, a **temporary lane closure will be in place from Hudson Parade over Avalon Street Bridge to Teresa Street** (please see the map below). Please allow extra travel time and follow the instructions of traffic control staff and signage while the changes are in place.



Map of pedestrian detour to station entry during night work from Monday 21 to Friday 25 September 2020

Access to Birrong Station is changing

A temporary pedestrian footbridge was partially installed at Hudson Parade during a scheduled Sydney Trains trackwork weekend in August. When complete, this footbridge will be the temporary entrance to the station while the new station entry from Avalon Street Bridge is constructed.

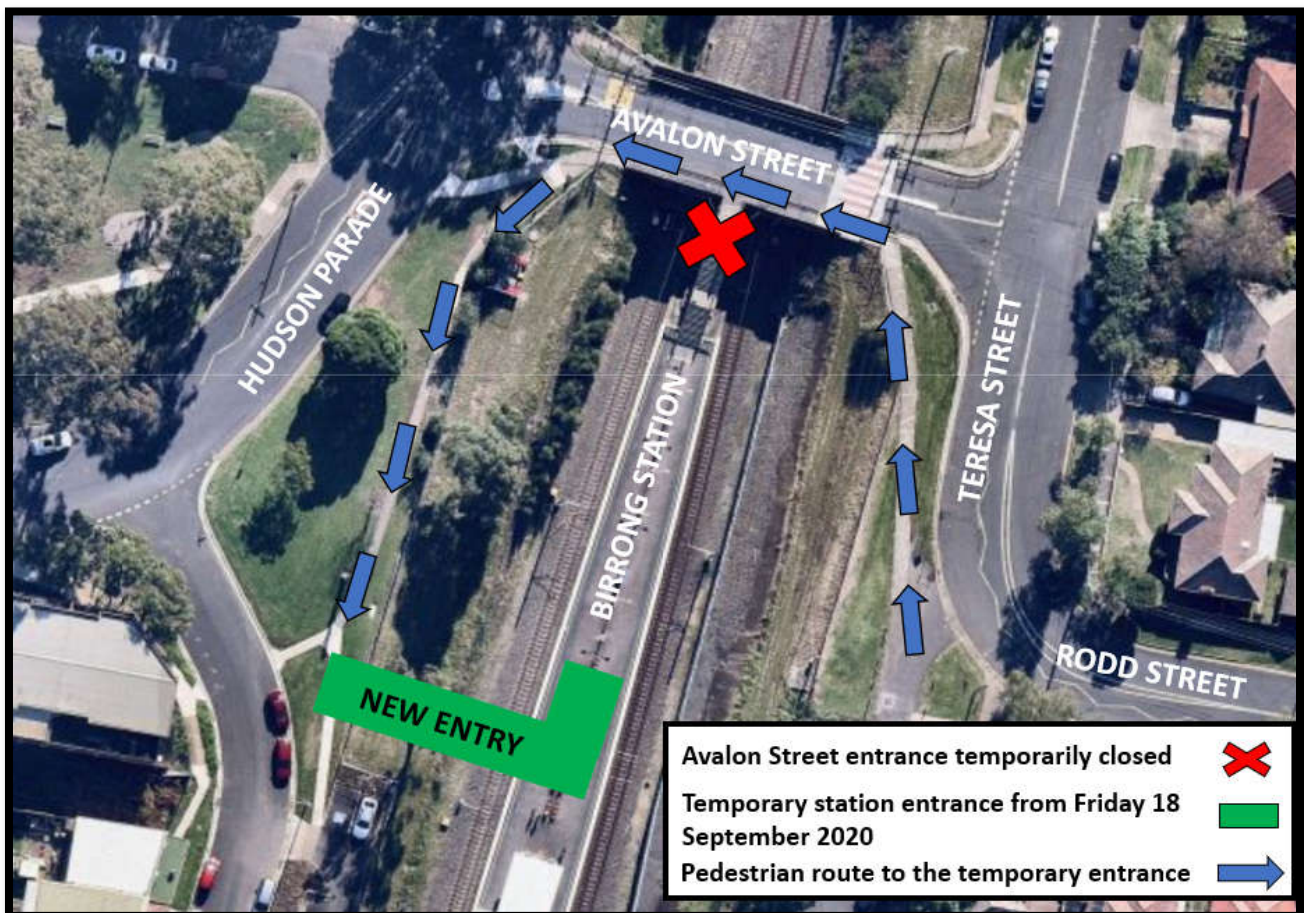
Customers will continue to use the regular station entry from the Avalon Street Bridge until the temporary footbridge is completed and open to the public from **7am Friday 18 September 2020**.

To access the station after this time, customers will use the temporary footbridge off Hudson Parade next to the commuter car park while the new station entry from Avalon Street Bridge is constructed.

The temporary footbridge has been designed and built in accordance with the relevant building standards and will include handrails and screening on the sides.

Signage will be in place to direct pedestrians to the temporary station entry. For more information, please see the map below.

We apologise for any inconvenience and thank you for your patience while we complete this important work.



Map of pedestrian detour to station entry from Friday 18 September 2020

Construction hours

Standard construction hours are **7am to 6pm Monday to Friday** and **8am to 1pm on Saturdays**.

For the safety of staff, rail customers and the community, some work will be completed outside standard construction hours. Nearby residents and businesses will be notified before any work outside these hours takes place.

Keep in touch

We will continue to keep the community informed with regular project notifications and frequent online updates published to the project website www.transport.nsw.gov.au/birrong.

If you would like to be added to the project distribution list, or for more information about the Birrong Station Upgrade, please contact us on **1800 684 490** or email projects@transport.nsw.gov.au.

For all urgent enquiries or complaints regarding construction activities, please call our 24-hour Construction Response Line on **1800 775 465**.

Chinese

这份文件包含你所在地区公共交通工程项目的重要信息。如果你需要传译服务，请致电翻译与传译服务机构，电话 131 450，要求他们为你接通交通部 (Transport for NSW)，电话是 (02) 9200 0200。传译员会为你做翻译。

Arabic

تتضمن هذه الوثيقة معلومات عن مشاريع النقل العام في منطقتكم . إذا كنتم بحاجة الى خدمات مترجم، الرجاء الإتصال بخدمة الترجمة الشفهية والخطية على رقم 450 131 واطلبوا منهم ان يتصلوا بمصلحة المواصلات في نيو ساوث ويلز على رقم (02) 9200 0200. عندها يساعدكم المترجم بالترجمة .

Vietnamese

Tài liệu này có các thông tin quan trọng về các dự án giao thông công cộng trong khu vực của quý vị. Nếu quý vị cần sự giúp đỡ của thông dịch viên, xin vui lòng liên hệ với Dịch vụ Thông Phiên Dịch ở số điện thoại 131 450 và yêu cầu họ gọi cho Cơ quan Giao thông Tiểu bang NSW ở số điện thoại (02) 9200 0200. Sau đó thông dịch viên sẽ giúp thông dịch cho quý vị



This document contains important information about public transport projects in your area. If you require the services of an interpreter, please contact the Translating and Interpreting Service on **131 450** and ask them to call Transport for NSW on **(02) 9200 0200**. The interpreter will then assist you with translation.