



Transport Access Program

Banksia Station Upgrade

Project Update

February 2021

Transport for NSW is improving accessibility at Banksia Station. The upgrade will provide a station precinct that is accessible to people with a disability or limited mobility, parents/carers with prams, and customers with luggage.

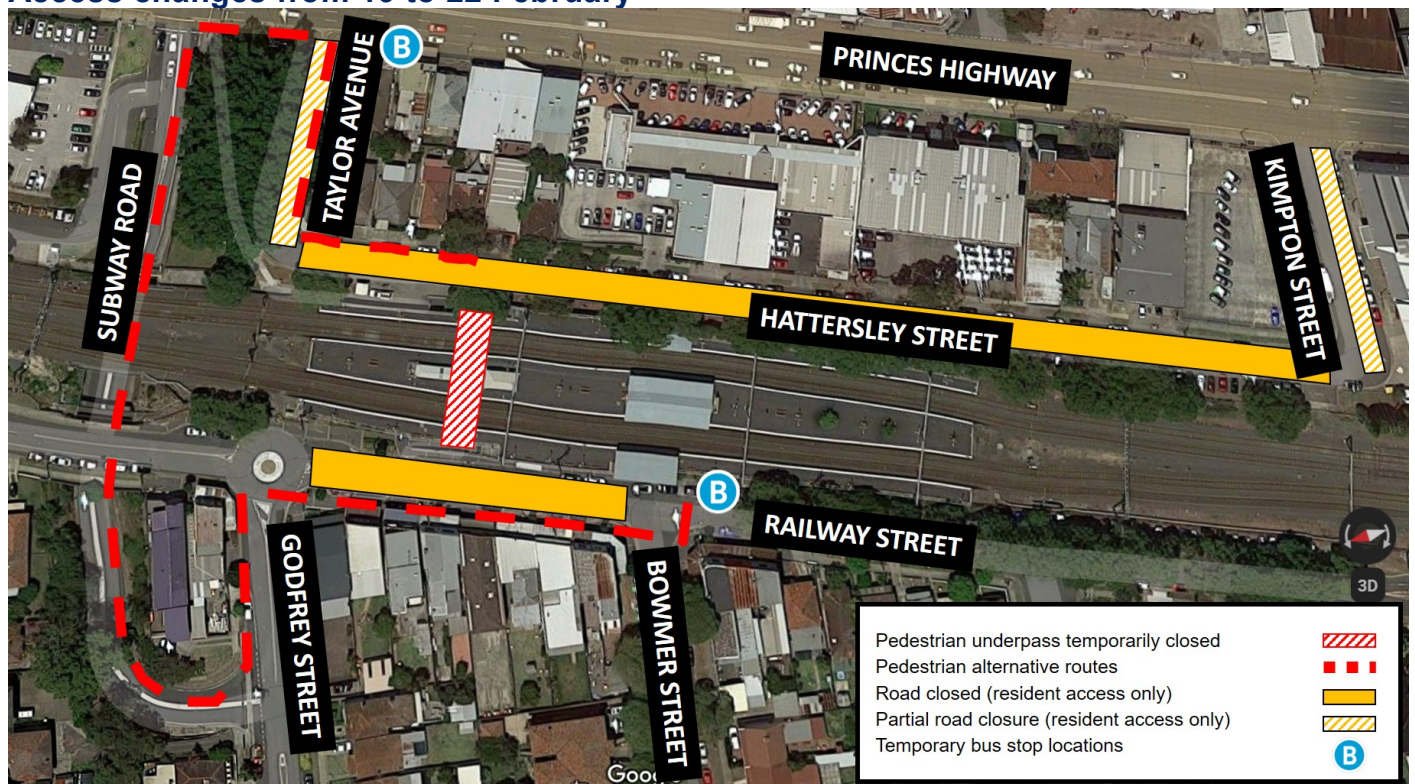
Weekend work in February 2021

For the safety of our workers, pedestrians and motorists, work will take place during a scheduled Sydney Trains trackwork period, when trains are not running.

Work will continuously take place from **6pm Friday 19 February** to **6am Monday 22 February**, weather permitting.

During this period, the station pedestrian underpass will be closed. Road closures will also be in place, with access provided only for local residents and businesses. Please see map below for details.

Access changes from 19 to 22 February



For more information call 1800 684 490,

Email projects@transport.nsw.gov.au or visit transport.nsw.gov.au/banksia

Activities will include:

- delivering and setting up of crane
- delivering and unloading materials and equipment
- installing steel structures for lifts and canopies
- installing utilities on station platforms
- installing roofing, downpipes and gutters
- installing new overhead wiring structures.

Equipment to be used includes cranes, excavators, hi-rail plant, hi-rail dump truck, hi-rail work platforms, scissor lift, scaffolding, trucks, generator, and powered hand tools.

This work will be noisy at times. Wherever possible measures to reduce noise will be implemented including scheduling noisy work during daytime hours, turning off vehicles and equipment when not in use, monitoring noise, using non-tonal reversing beepers and acoustic barriers.

We thank you for your patience during this important work.

Please visit www.transportnsw.info or call **131 500** for up to date information regarding service updates and replacement buses during this time.

Pedestrian, traffic and parking impacts from 19 to 22 February

From **6pm Friday 19 February** to **6am Monday 22 February**, access to the station and surrounding streets will change.

Buses will replace trains during this work and bus stop locations will be relocated. The Hattersley Street bus stop will be relocated to Princes Highway, near Taylor Avenue. The Railway Street bus stop and taxi zone will be shifted approximately 40 metres south towards Rockdale. Please refer to the map above.

The station underpass will be temporarily closed during the weekend work. Pedestrians will be directed to detour via Subway Road, as shown on the map above. A free shuttle bus will be available between the two temporary bus stops on Princes Highway and Railway Street.

Full and partial road closures will be in place along Hattersley Street, Kimpton Street, and Taylor Avenue. Vehicle and pedestrian access will be maintained for local residents and businesses only.

Traffic control and signage will be in place to direct pedestrians and motorists during the temporary changes. Please follow the directions of traffic controllers and signage, and allow extra travel time.

Other activities in February

Work activities in February include:

- demolition work in the station underpass and station structure
- installing scaffolding and starting work on lift shafts
- excavating, piling work and concrete pouring for new lift pits
- installing steelwork for lifts
- constructing new retaining walls
- constructing new stairs on platforms 1 and 4
- electrical work on Hattersley Street including installing a new electrical transformer
- excavating, trenching and installing new storm water drainage on Hattersley Street, Railway Street and in the underpass
- taxi zone on Railway Street will be unavailable at times during work near the station entrance.

For more information call **1800 684 490**,

Email projects@transport.nsw.gov.au or visit transport.nsw.gov.au/banksia

Equipment to be used includes a city crane, franna crane, excavator, piling rig, tipper trucks, delivery trucks, excavators, vacuum truck, powered hand tools, ground compaction equipment and concrete trucks.

Ongoing pedestrian access and parking changes

The station entries to **platforms 1 and 4** have been temporarily relocated to enable construction work as part of the upgrade. Temporary stairs provide access to both platforms 1 and 4. Three parking spaces on Taylor Avenue and up to 12 parking spaces on Hattersley Street are temporarily unavailable for construction vehicles and deliveries. These changes will be in place until mid-2021. We apologise for the inconvenience and thank you for your patience while we complete this work.

Construction hours

Standard construction hours are **7am to 6pm Monday to Friday** and **8am to 1pm on Saturdays**.

For the safety of staff, customers and the community some work may be completed outside standard construction hours. Nearby residents and businesses will be notified before any work outside these hours takes place.

Keep in touch

We will continue to keep the community informed with regular project notifications and frequent online updates published to the project website www.transport.nsw.gov.au/banksia.

If you would like to be added to the project distribution list, or for more information about the Banksia Station Upgrade, please contact us on 1800 684 490 or email projects@transport.nsw.gov.au. For all urgent enquiries or complaints regarding construction activities, please call our 24-hour Construction Response Line on 1800 775 465.



This document contains important information about public transport projects in your area. If you require the services of an interpreter, please contact the Translating and Interpreting Service on **131 450** and ask them to call Transport for NSW on **1800 684 490**. The interpreter will then assist you with translation.

Macedonian

Овој документ содржи важни информации за проекти од јавниот транспорт во Вашата област. Доколку Ви е потребен толкувач, Ве молиме контактирајте ја Службата за Преводи и Толкување на 131 450 и побарајте да се јават во Транспорт за Нов Јужен Велс на 1800 684 490. Потоа толкувачот ќе ви помогне со преводот.

Greek

Το παρόν έγγραφο περιέχει σημαντικές πληροφορίες σχετικά με δημόσια έργα μεταφορών στην περιοχή σας. Αν χρειάζεστε τις υπηρεσίες διερμηνέα, παρακαλούμε επικοινωνήστε με την Υπηρεσία Μεταφράσεων και Διερμηνείας στο 131 450 και ζητήστε τους τηλεφωνήσουν στις Συγκοινωνίες στη ΝΝΟ στο 1800 684 490. Ο διερμηνέας θα σας βοηθήσει στη συνέχεια με τη μετάφραση.

Arabic

تتضمن هذه الوثيقة معلومات عن مشاريع النقل العام في منطقتكم. إذا كنتم بحاجة إلى خدمات مترجم، الرجاء الإتصال بخدمة الترجمة الشفهية والخطية على رقم 131 450 واطلبوا منهم أن يتصلوا بمصلحة المواصلات في نيو ساوث ويلز على رقم 1800 684 490. عندها يساعدكم المترجم بالترجمة.

Simplified Chinese

这份文件包含你所在地区公共交通工程项目的重要信息。如果你需要传译服务，请致电翻译与传译服务机构，电话 131 450，要求他们为你接通交通部(Transport for NSW)，电话是 1800 684 490。传译员会为你做翻译。

For more information call **1800 684 490**,

Email projects@transport.nsw.gov.au or visit transport.nsw.gov.au/banksia