



Transport Access Program

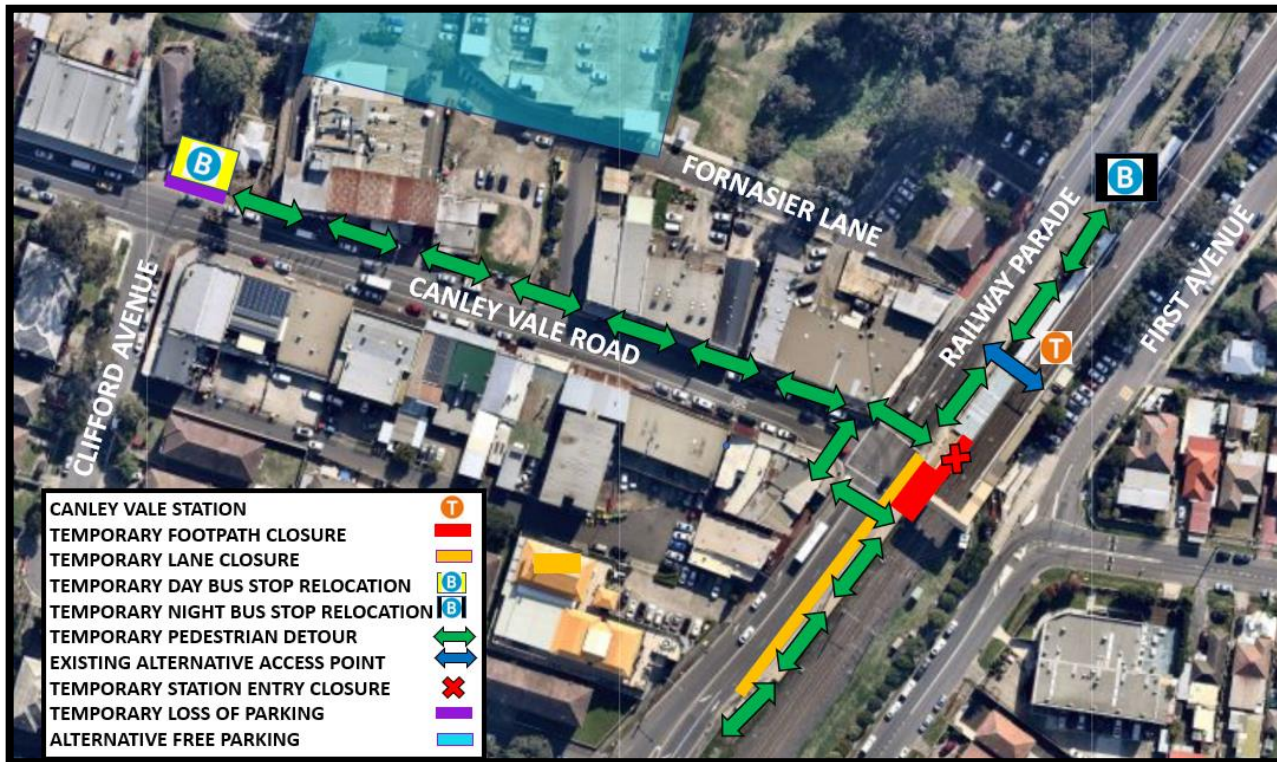
Canley Vale Station Upgrade

Project Update

February 2021

Transport for NSW is improving accessibility at Canley Vale Station. The upgrade will provide a station precinct that is accessible to people with a disability or limited mobility, parents/carers with prams, and customers with luggage.

Access to Canley Vale Station has changed



Pedestrian detour and temporary bus stops at Canley Vale Station

The main entrance to **Platform 1 and sections of the footpath on Railway Parade** are temporarily closed to enable construction work to be completed safely. Hoarding has been installed around work areas and intermittent lane closures and pedestrian detours on Railway Parade will be in place when required. Both Platform 1 and the footbridge can be accessed via the existing alternate station ramp entrance on Railway Parade. These changes will be in place until mid 2021.

The station bus stop on Railway Parade is temporarily closed until mid-2021 while station work is carried out. Day time and school service buses have been relocated to Canley Vale Road across from Clifford Avenue. Night bus services (between 12:04am and 5:30am) and rail replacement buses have been relocated to Railway Parade, northeast of the station entry.

For more information call 1800 684 490,
Email projects@transport.nsw.gov.au or visit transport.nsw.gov.au/canleyvale

Upcoming work

Work activities in February include:

- ongoing work for the new lifts adjacent to First Avenue and Railway Parade including construction of the lift landing, lift pits and retaining walls
- truck deliveries at the First Avenue and Railway Parade station entries (traffic control will be in place to assist when required)
- construction of the Boarding Assistant Zone canopy on Platform 2
- kerb raising adjacent to the First Avenue commuter car park
- asphaltting and line marking two new car spaces on First Avenue where recently removed tree stumps were located
- refurbishment of the male toilet on Platform 1 (the female toilet on Platform 1 will be available to use as a unisex toilet during this time)

Equipment to be used includes trucks, grinder, elevated work platform, vacuum trucks, excavators, jack hammer, concrete trucks, and line pump, piling rig and hand tools.

Traffic control and signage will be in place to assist pedestrians and motorists around the work area when required.

The work activities will be noisy at times. We apologise for the inconvenience and will minimise impacts by turning off vehicles and equipment when not in use, monitoring noise levels, using non-tonal reversing beepers and acoustic barriers.

Temporary changes to the station toilets

Work will begin to convert the existing male and female toilets on Platform 1 into one family accessible unisex toilet and one unisex toilet.

To enable this upgrade, one toilet will be closed at a time while work is completed. During this time one toilet will be converted to a unisex toilet for all customers to use. Signage will be in place to direct customers to the unisex toilet.

We apologise for the inconvenience and thank you for your patience while we carry out this important work.

Temporary changes to parking

Two timed parking spaces in front of 43 Canley Vale Road are **temporarily unavailable until mid-2021** to relocate a bus stop. Up to 10 spaces within the First Avenue commuter car park are also unavailable until Saturday 13 February. Alternative parking is available on surrounding streets and in the Council car park located on Fornasier Lane.

Construction hours

Standard construction hours are **7am to 6pm Monday to Friday** and **8am to 1pm on Saturdays**. For the safety of staff, rail customers and the community, some work will be completed outside standard construction hours. Nearby residents and businesses will be notified before any work outside these hours takes place.

Keep in touch

We will continue to keep you informed with regular project notifications and frequent online updates published to the project website www.transport.nsw.gov.au/canleyvale . If you would like to be added to the project distribution list, or for more information on the Canley Vale Station Upgrade, please contact us on **1800 684 490** or email projects@transport.nsw.gov.au

For all urgent enquiries or complaints regarding construction activities, please call our 24-hour Construction Response Line on **1800 775 465**.



This document contains important information about public transport projects in your area. If you require the services of an interpreter, please contact the Translating and Interpreting Service on **131 450** and ask them to call Transport for NSW on **1800 684 490**. The interpreter will then assist you with translation.

Chinese (Simplified)

这份文件包含你所在地区公共交通工程项目的重要信息。如果你需要传译服务，请致电翻译与传译服务机构，电话 131 450，要求他们为你接通交通部 (Transport for NSW)，电话是 1800 684 490。传译员会为你做翻译。

Vietnamese

Tài liệu này có các thông tin quan trọng về các dự án giao thông công cộng trong khu vực của quý vị. Nếu quý vị cần sự giúp đỡ của thông dịch viên, xin vui lòng liên hệ với Dịch vụ Thông Phiên Dịch ở số điện thoại 131 450 và yêu cầu họ gọi cho Cơ quan Giao thông Tiểu bang NSW ở số điện thoại 1800 684 490. Sau đó thông dịch viên sẽ giúp thông dịch cho quý vị.