



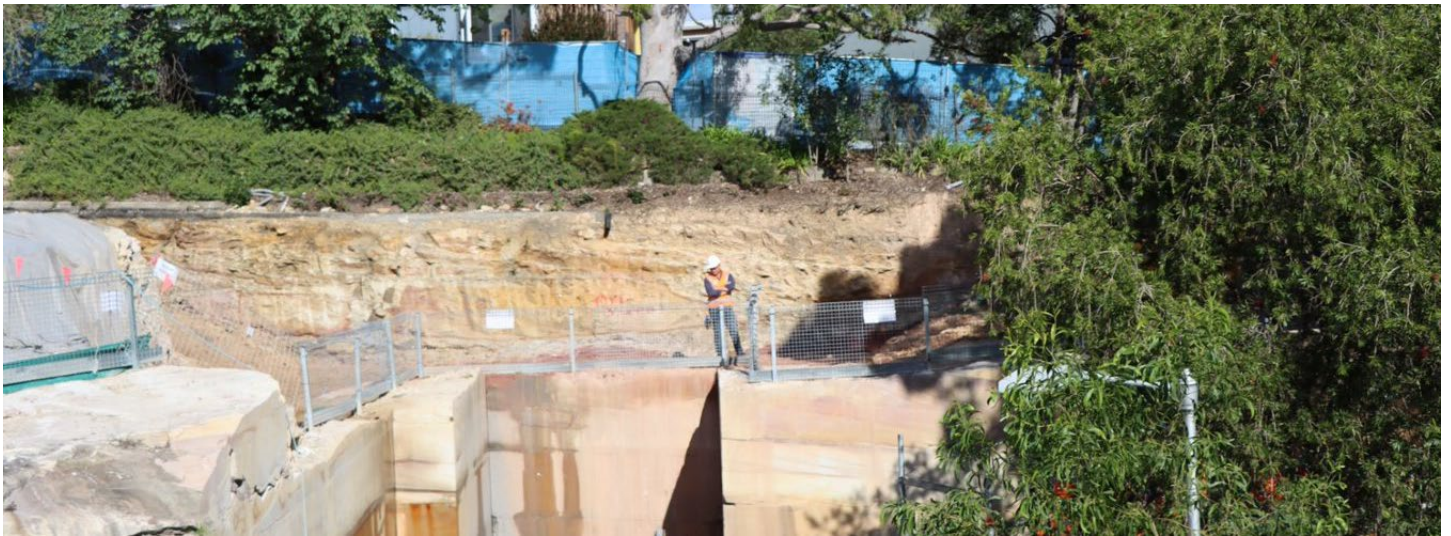
# Transport Access Program

## Como Station Upgrade

**Project update**

**June 2021**

Transport for NSW is upgrading Como Station to make it easier for everyone to access, including people with a disability or limited mobility, parents/carers with prams, and customers with luggage.



*Bulk excavation for the new lift to Como Parade.*

## Upcoming work

Construction of the Como Station Upgrade is currently underway. Work will continue throughout June and includes:

- continued excavation near the Como Parade entrance
- slab removal at the top of the station stairs
- concrete pours for the new lift shaft, retaining walls and station stairs on Como Parade
- installation of rock anchors near the Como Parade entrance
- installation of louvers to lift shaft on the platform
- steel frame and glass installation for Como Parade lift
- electrical upgrade work to station building
- HV padmount installation work to rail corridor
- sandstone block façade installation to Como Parade.

Equipment to be used includes excavators, hammer drills, bobcats, concrete trucks and pumps, hand held saws, large cranes and power tools.

For more information call **1800 684 490**,

Email [projects@transport.nsw.gov.au](mailto:projects@transport.nsw.gov.au) or visit [www.transport.nsw.gov.au/como](http://www.transport.nsw.gov.au/como)

For urgent enquiries or complaints regarding construction activities, please call 24 hours **1800 775 465**

## Upcoming night work

Night work will take place between the hours of **8.30pm and 4.30am commencing on Monday 31 May**. Work will be spread across **the five week nights (Sunday to Thursday) for two weeks**. This work will include the painting of the station underpass and newly installed lift shaft. As this work is performed in the pathway of transport customers, it needs to be carried out when the station is not in use.

The work is not expected to generate elevated levels of noise. However, mitigation measures will be in place to minimise disruption to the local community.

## Upcoming weekend work

Weekend work will take place from **5am Saturday 26 June until 12am Monday 28 June 2021**. Some of this work will take place in the rail corridor and needs to be carried out during a scheduled Sydney Trains track work period when trains are not running for the safety of customers, workers and the wider community.

Work will include:

- platform re-surfacing
- LV electrical upgrade work
- HV electrical pole installation and commissioning
- retaining wall excavation to Como Parade Commuter Car Park
- platform canopy structure installation.

Equipment to be used includes cranes, excavators, dump trucks, bobcats, rollers and hand tools.

This work will be noisy at times. Wherever possible measures to reduce noise will be implemented including scheduling noisy work during daytime hours, turning off vehicles and equipment when not in use, monitoring noise, using non-tonal reversing beepers and acoustic barriers.

We apologise for the inconvenience and thank you for your patience during this important work.

Please visit [www.transportnsw.info](http://www.transportnsw.info) or call **131 500** for up to date information regarding service updates and replacement buses during this time.

## Platform work and changes

As part of the station upgrade, the existing flooring at the top of the station access stairs must be re-graded to create a level surface. This work will commence Thursday 10 June, with the staged demolition and remediation taking up to 10 days to complete. There will be pedestrian detours, please use caution.

Additionally, new tactile ground surface indicators that assist customers with vision impairment will be installed along the edge of the Platforms.

The existing indicators will be removed during weekend work on **26 June** to allow for the new asphalt to be laid. Once this is complete, the surface will need time to cure prior to the new tactiles being installed. Installation of the new tactiles will commence **from Monday 5 July, with completion expected by mid-July**. Work areas will be marked using bollards and tape and supervised at all times. Work will pause while customers board and alight the trains. During this period, temporary non-slip hazard tape and directional signage will be installed, and regular station announcements will be made to ensure the safety of customers.

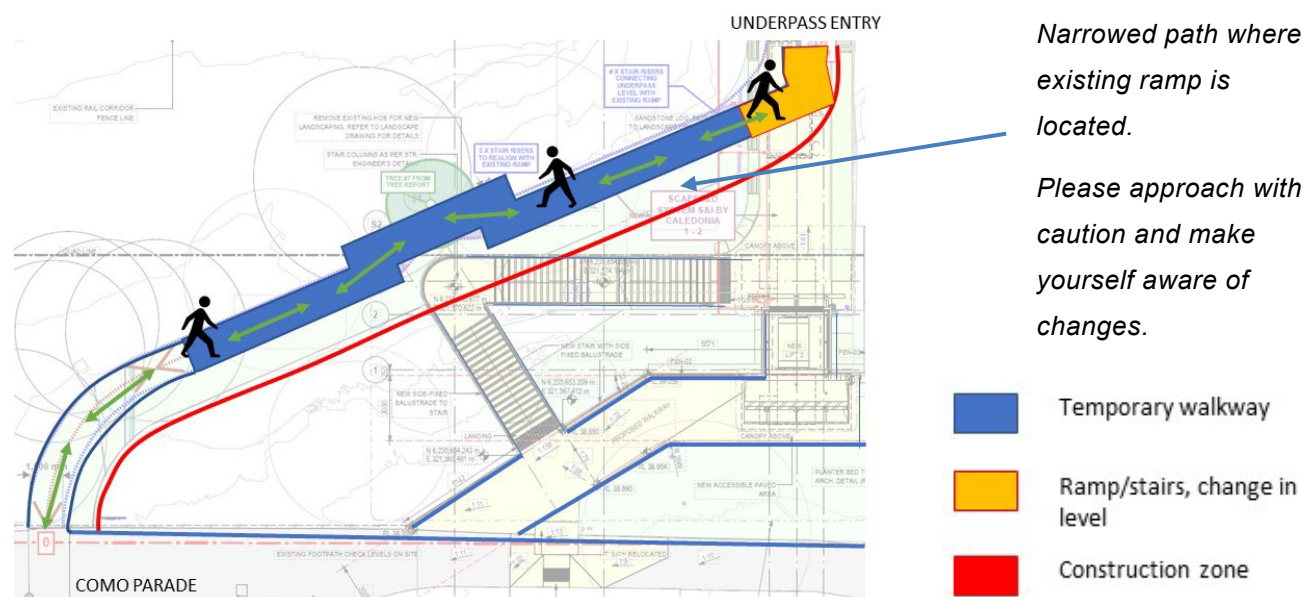
## Ongoing temporary changes to parking

Up to 20 car park spaces are temporarily closed in the northern end of the Commuter Car Park until **July 2021**. Whenever possible, parking spaces will be reopened and made available for customer use during these times. These temporary closures are essential to enable safe excavation, concrete pours, and initial installation work for the new lift. Parking will be reinstated gradually as construction progresses. Traffic control measures will be in place for the safety of motorists and pedestrians, as required.

## Temporary changes to access for pedestrians

From **mid-April, access was reinstated to and from Como Parade via the station underpass**. There have been some changes to the reinstated access including a **ramp, narrow pathway and stairs near the station entry**. Customers requiring ramp-only access will need to continue to access the station via the existing **Railway Road bridge detour**.

The area surrounding the Como Parade station entrance will be used for minor construction activities including the movement of excavated materials. Short intermittent closures may occur, however these closures will be scheduled outside of peak hours and between train arrivals to minimise the disruption to the community.



Map of temporary access to and from Como Parade for pedestrians

## Construction hours

To support the industry and continue the delivery of critical infrastructure, the NSW Government has introduced new rules allowing construction sites to operate on weekends and public holidays. Standard construction hours are now **7am to 6pm every day, including Sundays and public holidays**. These changes have been made to facilitate social distancing on construction sites and support the health and wellbeing of workers.

## Keep in touch

We will continue to keep the community informed with regular project updates. Further information is available on the project website [www.transport.nsw.gov.au/como](http://www.transport.nsw.gov.au/como). If you would like to be added to the project distribution list, please contact us on **1800 684 490** or email [projects@transport.nsw.gov.au](mailto:projects@transport.nsw.gov.au)

For all urgent enquiries or complaints regarding construction activities, please call our 24-hour Construction Response Line on **1800 775 465**.



This document contains important information about public transport projects in your area. If you require the services of an interpreter, please contact the Translating and Interpreting Service on **131 450** and ask them to call Transport for NSW on **1800 684 490**. The interpreter will then assist you with translation.