

Transport Access Program Bellambi Station Upgrade

Community notification August 2022

The NSW Government is improving accessibility at Bellambi Station. This upgrade will be delivered as part of the Transport Access Program, an initiative to provide a better experience for public transport customers by delivering modern, safe, and accessible infrastructure.



Pictured: Stormwater work has started on the platform.

Completed work

In July the site compound was set up and is expected to remain in place for about 12 months. The compound is complete with site sheds, fencing, barriers, some equipment, and materials.

Work also started on the platform with stormwater works and excavation for the new building's services.

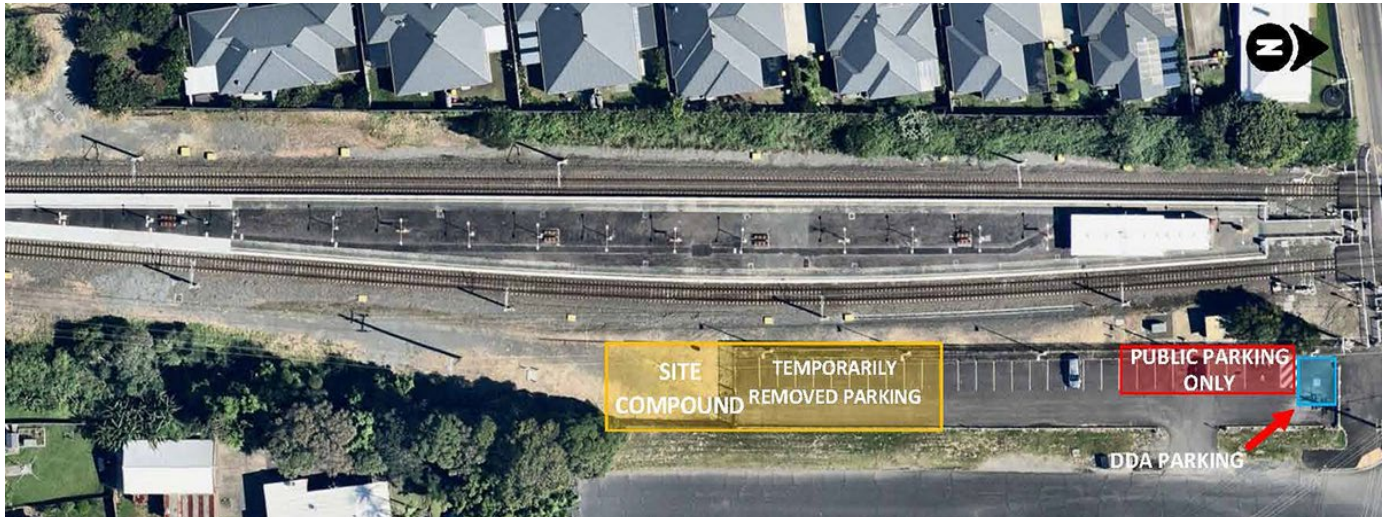
Upcoming work

Foundation work will start in August, including piling and excavation to support the new building. Weather permitting, the concrete slab for the new building will also be built and poured. Pedestrian access to and from the carpark will be maintained at all times.

Commuter car park

There will be both commuter and designated accessible parking spaces available in the commuter car park for the duration of the project. To allow for the safe delivery of equipment and materials, some parking spaces will be unavailable to the public while work is happening.

To preserve the grassed area alongside the car park, construction vehicles will not be parking on it, but during busy times some vehicles may need to park on Francis Street.



Pictured: Parking changes in commuter car park

Working hours

Most work will occur during standard construction hours between **7am and 6pm Monday to Friday and Saturdays from 8am to 1pm.**

All work is dependent on weather and site conditions and is subject to change.

Contact

If you have any questions or would like more information, please contact our project team:

Call the project information line: 1800 684 490

Email: projects@transport.nsw.gov.au

Visit: transport.nsw.gov.au/bellambi

Call the 24/7 construction response line: 1800 775 465



Translating and Interpreting Service

If you need help understanding this information, please contact the Translating and Interpreting Service on **131 450** and ask them to call us on **1800 684 490**.