

Blackheath Station Upgrade

Community Update | February 2023

Transport for NSW is upgrading Blackheath Station, with the work expected to be completed in late 2023.

The project is being delivered as part of the Transport Access Program, which aims to provide station precincts that are accessible to people with a disability, limited mobility, parents/carers with prams and customers with luggage.

Weekend and night work during Blackheath Station closure – 17 to 20 February 2023

Blackheath Station will be closed during a scheduled Sydney Trains track work period and we have coordinated work to be carried out during this time while no trains are running. Work will be carried out between **10pm Friday 17 February and 7am Monday 20 February 2023**.

Work will include:

- Installation of precast concrete elements for new lift shafts
- Installation of structural steel for new lifts, including roofing, glazing and cladding works
- Commissioning new electrical distribution boards
- Resurfacing of the platform
- Installation of new services within the station precinct

Equipment to be used includes mobile cranes, excavators, concrete trucks, concrete pumps, dumpers, elevated work platforms, surveying equipment, construction trucks, power, and hand tools.

Please visit transportnsw.info or call 131 500 for information about replacement buses during this time.

Parking and access changes

The station's kiss and ride zone will be relocated in front of the station on the Great Western Highway during this time to allow works to be carried out. Replacement buses will also use this area (please refer to map overleaf).

Twelve parking spaces on the Great Western Highway will be temporarily removed from **12am Saturday 18 February to 7am Monday 20 February 2023**.

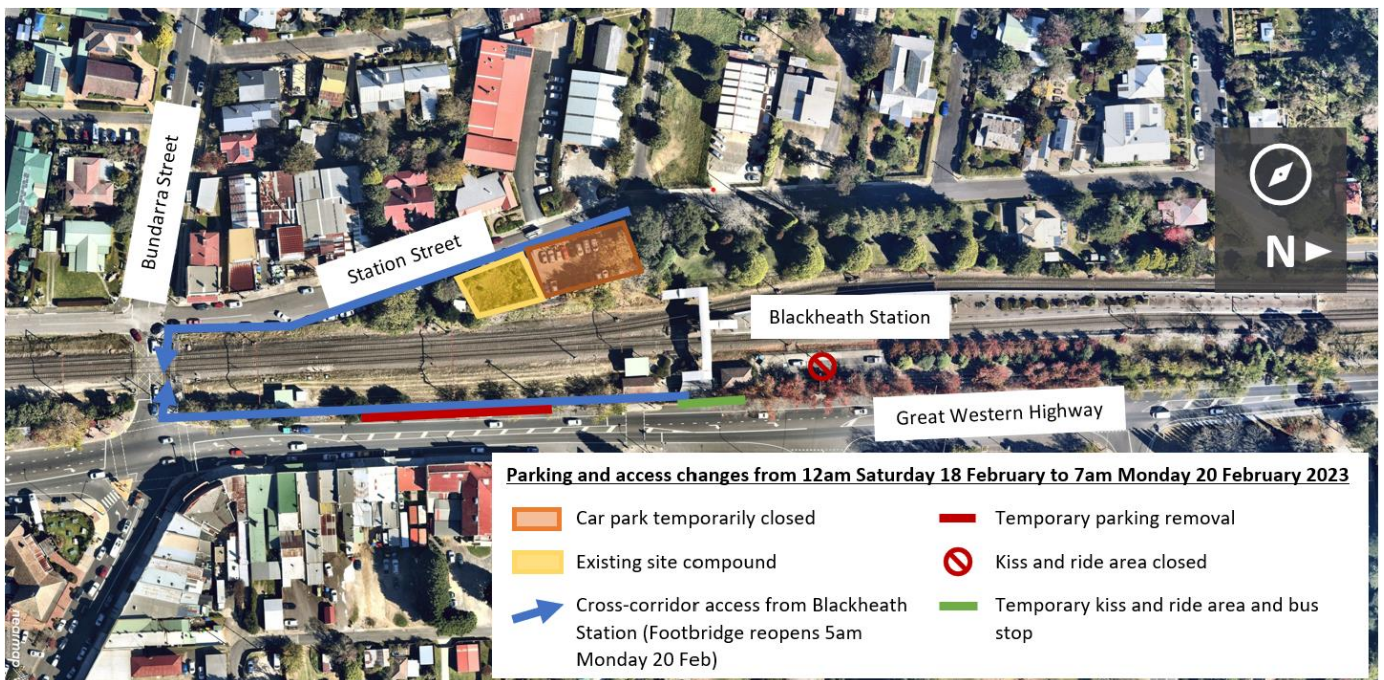
The station car park on Station Street will be closed from **Monday 13 to Monday 20 February 2023** to allow deliveries, set up of equipment and preliminary works ahead of the weekend work.

The station's existing footbridge will also be closed from **12am Saturday 18 February to 5am Monday 20 February 2023**.

Alternative access across the rail corridor will be available at the Bundarra Street level crossing during this time.

What to expect

There may be some noise associated with our work and measures will be implemented to reduce impacts wherever possible, such as turning off vehicles when not in use, positioning construction equipment as far away from residential areas as possible, using non-tonal reversing beepers and monitoring noise levels.



Station access during construction

The level pedestrian crossing at Blackheath Station was removed in 2022 to enable the construction of new accessible lifts. During construction, the stairs to the footbridge will remain open to allow cross-corridor access.

Customers with mobility or accessibility constraints who are unable to use the footbridge are advised to call **1800 684 490** to arrange alternate transportation to the nearest accessible station at Katoomba during this time.

Keep in touch

We will continue to keep the community informed with regular project updates.

Further information is available on the project website: transport.nsw.gov.au/blackheath-station-upgrade.

If you would like to be added to the project distribution list, or for more information on the Blackheath Station Upgrade, please contact us on **1800 684 490** or email projects@transport.nsw.gov.au.

For all urgent enquiries or complaints regarding construction activities, please call our 24-hour Construction Response Line on **1800 775 465**.

Contact us

If you have any questions or would like more on the Blackheath Station Upgrade, please contact our project team:



1800 684 490



projects@transport.nsw.gov.au



transport.nsw.gov.au/blackheath-station-upgrade



231 Elizabeth St, Sydney NSW 2000
PO Box K659, Haymarket NSW 1240



If you need help understanding this information, please contact the Translating and Interpreting Service on **131 450** and ask them to call us on **1800 684 490**

February 2023

Privacy Transport for NSW ("TfNSW") is subject to the Privacy and Personal Information Protection Act 1998 ("PPIP Act") which requires that we comply with the Information Privacy Principles set out in the PPIP Act. All information in correspondence is collected for the sole purpose of assisting in the delivery this project. The information received, including names and **addresses** of respondents, may be published in subsequent documents unless a clear indication is given in the correspondence that all or part of that information is not to be published. Otherwise we will only disclose your personal information, without your consent, if authorised by the law. Your personal information will be held by us at 27 Argyle Street, Parramatta. You have the right to access and correct the information if you believe that it is incorrect.